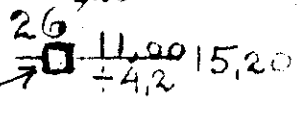
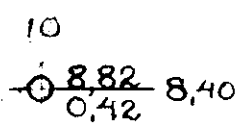
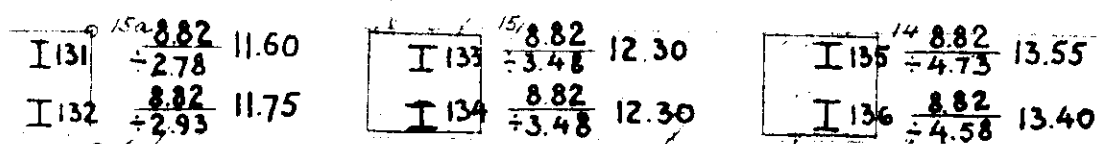
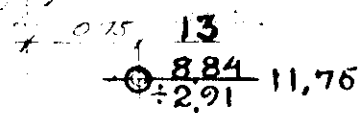
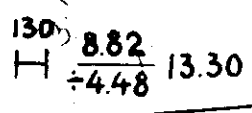
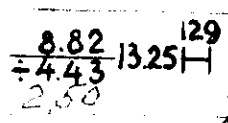
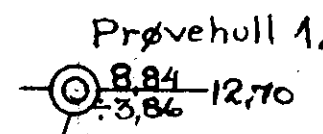


I104 Utsnitt siltpl. 1:50
 I103 kun et fåtall baringer
 overført U-Kort
 (her 13 & 26)



Gort 1919 av Lange
 obs! terrengkote



PRØVEHULL 1. SO: BT IV

| JORDART. | Dyp m | Vannpet. av | | H ₃ | H ₁ | F | K | pH | O |
|-----------------------------|----------|----------------|---------------|----------------|----------------|----|------|-----|---|
| | | total subst | tørr subst | | | | | | |
| Leire, fast m/ hårde klump. | 1 | 26,0 | 35,2 | 315 | 62 | 50 | 0,57 | 8,5 | |
| Tørrskorpeleire | 2 | 22,5 | 28,9 | 760 | | | 0,87 | 6,2 | |
| Leire, fast | 3 | 25,6 | 34,5 | 102 | 31 | 43 | 0,26 | 8,5 | |
| " | 4 | 25,0 | 33,4 | 93 | 21 | 38 | 0,24 | | |
| " | 5 | 27,2 | 37,3 | 93 | 28 | 45 | 0,24 | 8,8 | |
| " | 6 | 26,0 | 35,1 | 142 | 38 | 46 | 0,33 | | |
| " litt sandholdig | 7 | 22,8 | 30,0 | 137 | 32 | 36 | 0,32 | 8,8 | |
| " endel " | 8 | 16,8 | 20,2 | 108 | 29 | 23 | 0,27 | 8,8 | |

LL Febr. '39
 ULL " "
 ereng
 ell
 il fjell
 LL Dec. '38
 ULL " "

LL Dec. 1919
 ig. LARGE

Betegnelser :
 H₃ = Rel. holdfasthet nat. leire
 H₁ = " " " " omrørt " "
 F = " " finhetstall
 K = Kohesjon (Kg./cm²)
 pH = Surhetsgrad (over 7 alk.)
 O = Organiske best. deler (% nat. leire)

Fjellkoter 100-148 opgitt
 M/8-39 av Form. L. Aasen. A/s. F. Selmer.

Anmerk. Overflate fundamentsåle ca kote 9,65, 80 cm over kjellerгалу
 se også tsn. nr. 344 (1938)

Skovlprøver med pH analyse
 ikke overført

Haukelid: 356
 (1939)