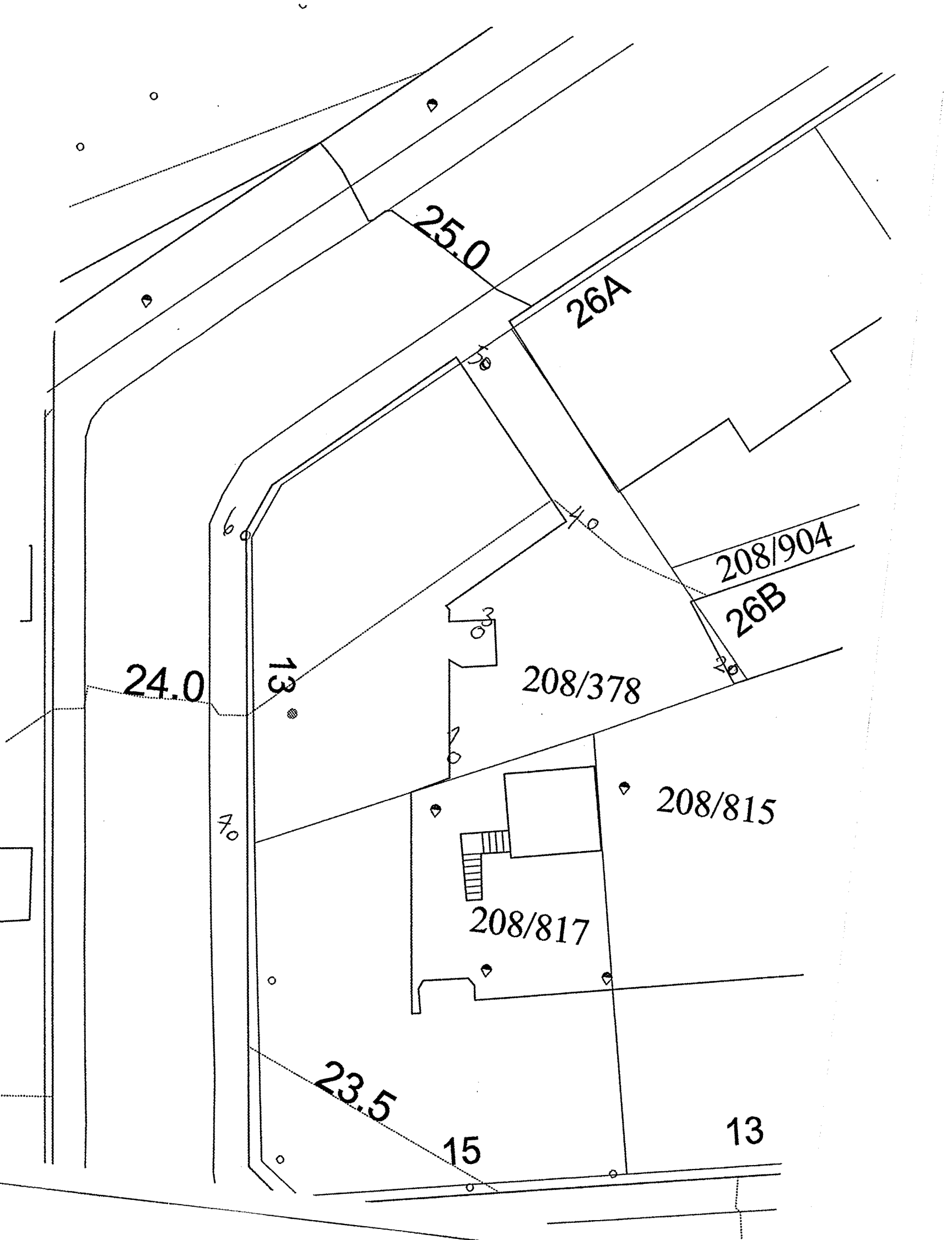


\*NO: B2<sup>II</sup>

74

Langes gt. 13  
Frimannsgt.



25.0

26A

208/904

26B

208/378

208/815

208/817

24.0

13

23.5

15

13

7.0

6.0

4.0

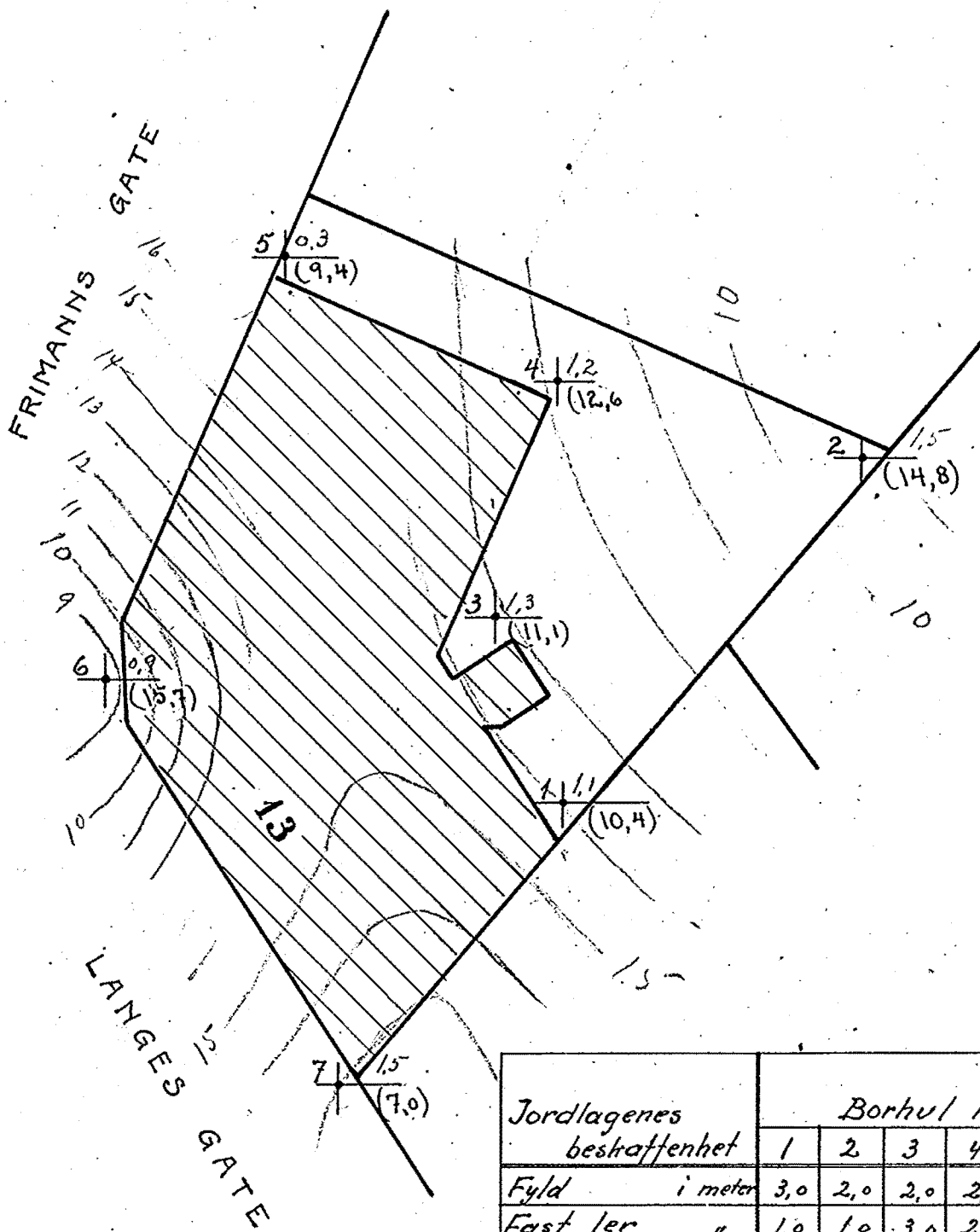
3.0

2.0

GRUNDBORINGER I NR 13 LANGES. GT.

BL. 74 ✓

M. 1:250



| Jordlagenes<br>beskaffenhed | Borhul nr. |      |      |      |      |     |     |
|-----------------------------|------------|------|------|------|------|-----|-----|
|                             | 1          | 2    | 3    | 4    | 5    | 6   | 7   |
| Fyld i meter                | 3,0        | 2,0  | 2,0  | 2,0  | 2,0  | 2,0 | 2,0 |
| Fast ler "                  | 1,0        | 1,0  | 3,0  | 2,0  | 3,25 | 2,0 | 2,0 |
| Bløt ler "                  | 6,4        | 11,5 | 6,1  | 8,6  | 4,15 | 1,7 | 3,0 |
| Gruslag på fjeld "          |            | 0,3  |      |      |      |     |     |
| Dybde tils. "               | 10,4       | 14,8 | 11,1 | 12,6 | 9,4  | 5,7 | 7,0 |

Tal i blyant angir hoide fra terreng til ovli. søkkel.

Skræa tal (1,4) angir dybde fra terreng til fjeld

Kristiania novbr. 1919