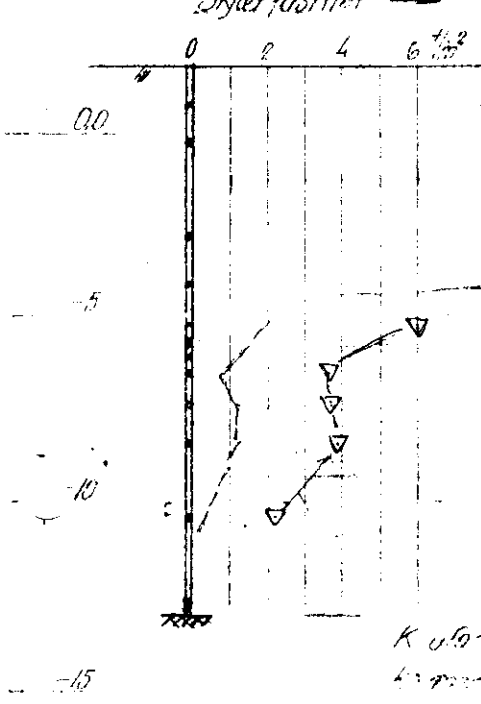


224 N
 Prøveserie T b=180

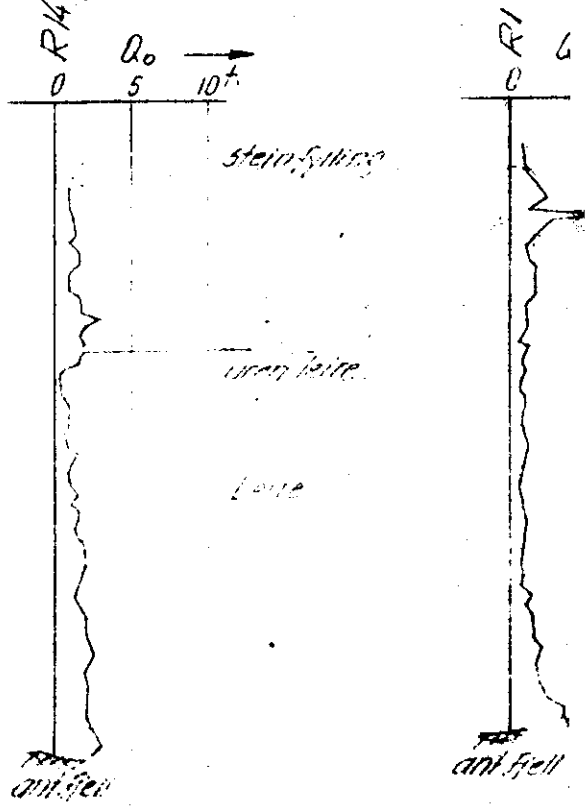
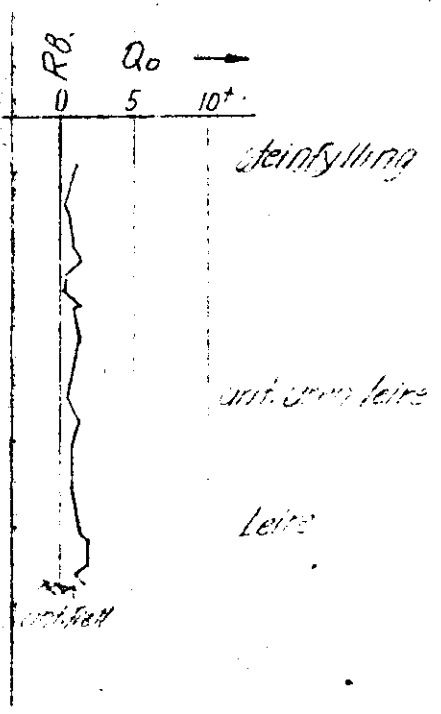
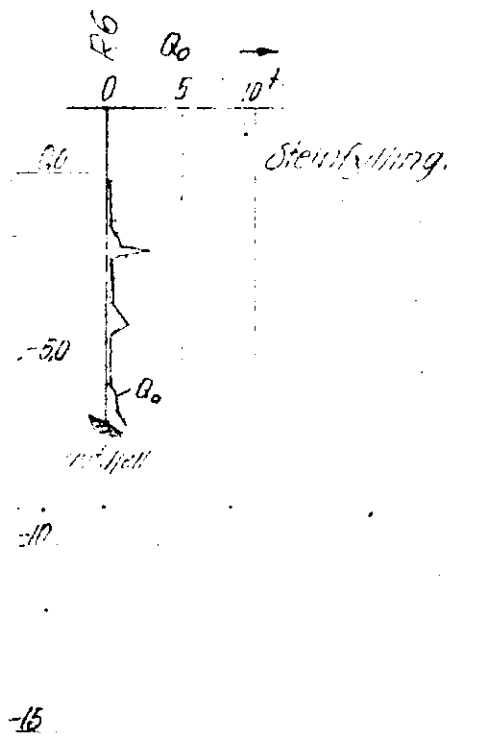
Skjærfasthet →



Dyp	w	n	H _i	δ	σ	τ	Merknad
1.0					1.2		Fylling, Stein, murst. biter.
2.0					0.9		" leirskifer.
4.5					1.0		" stein, noe org. materiale.
5.8					0.4		" sand, grus.
7.5	53.5	57.5	8.3	2.9	1.8	1.70	leirelag, mjukt, mørk
7.5	53.7	58.8	7		2.0		
8.0	41.9	55.3	3.3	4.3	1.5	1.81	leire, mjukt
9.0	39.8	52.5	4.7	3.1	0.9	1.84	"
10.0	38.8	51.6	4.9	3.3	0.7	1.85	"
12.0	32.6	52.5	1.6	5.5	0.2	1.86	"
14.5	38.4	51.0			0.2	1.85	" sandig

K uløst styret
 for prøvet

undersøinger HM=11200



NOTERBY 3977-1 (1958)

SV: A1 III