

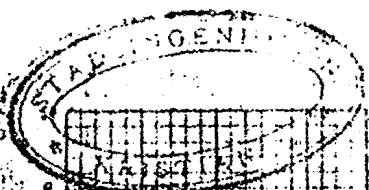
375 \*

SO: B1 IV

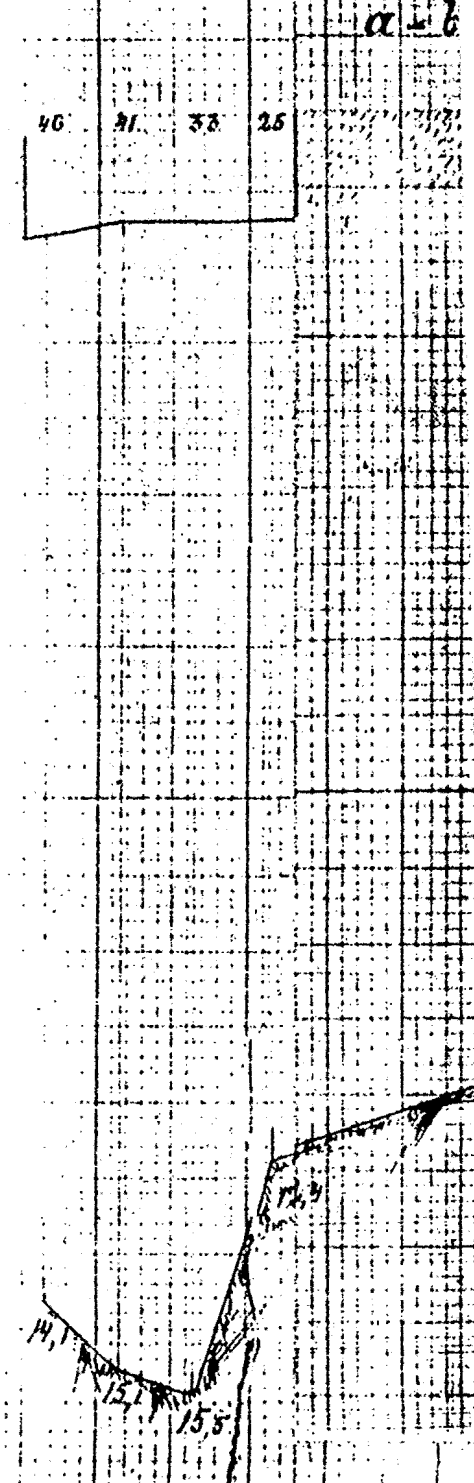
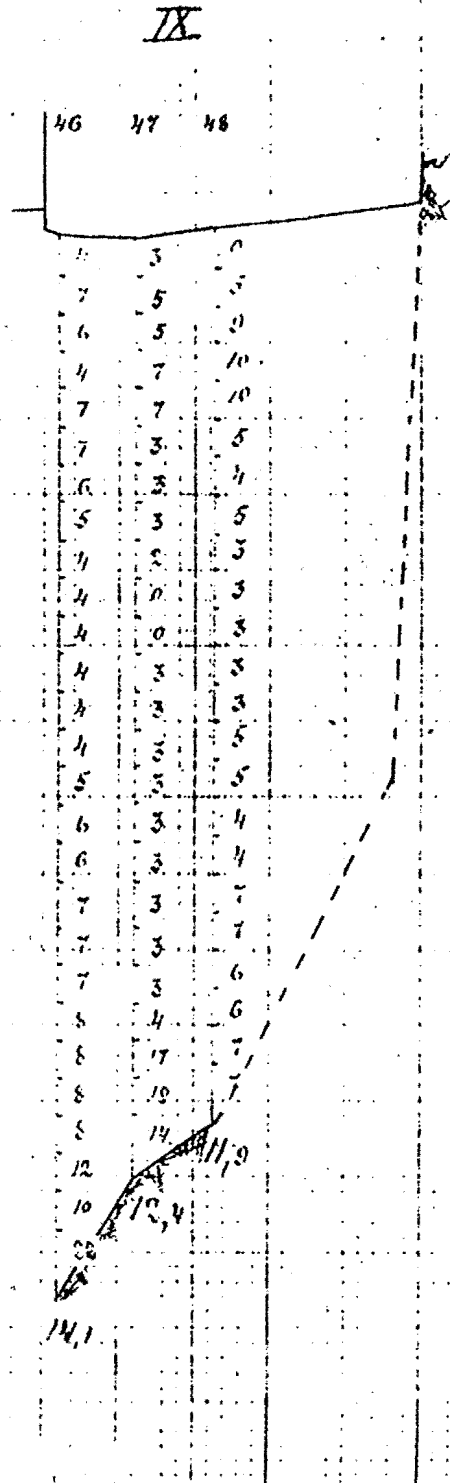
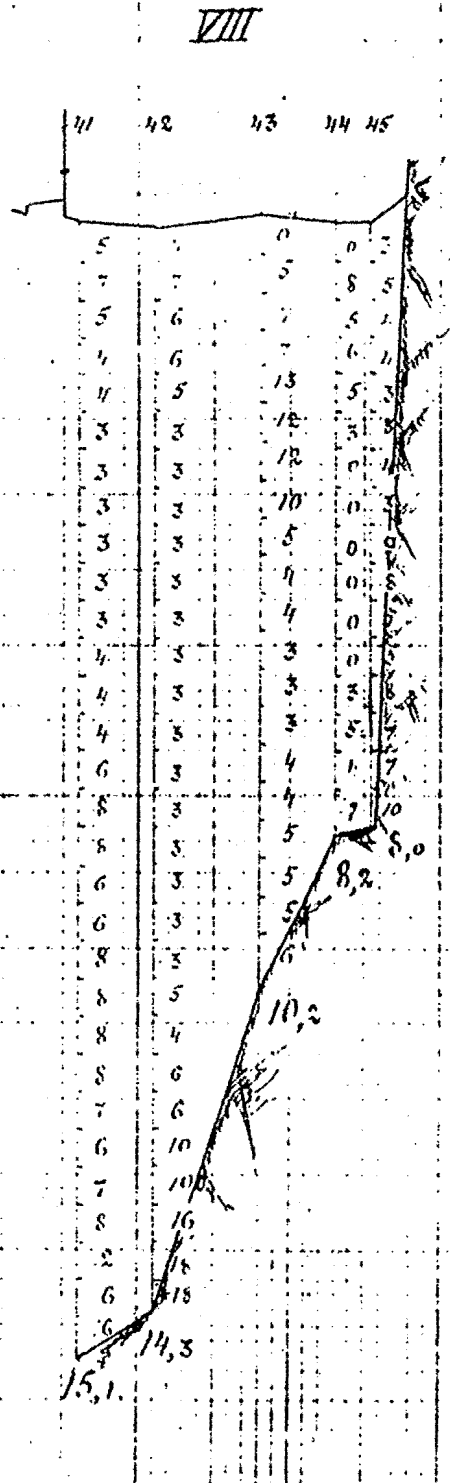
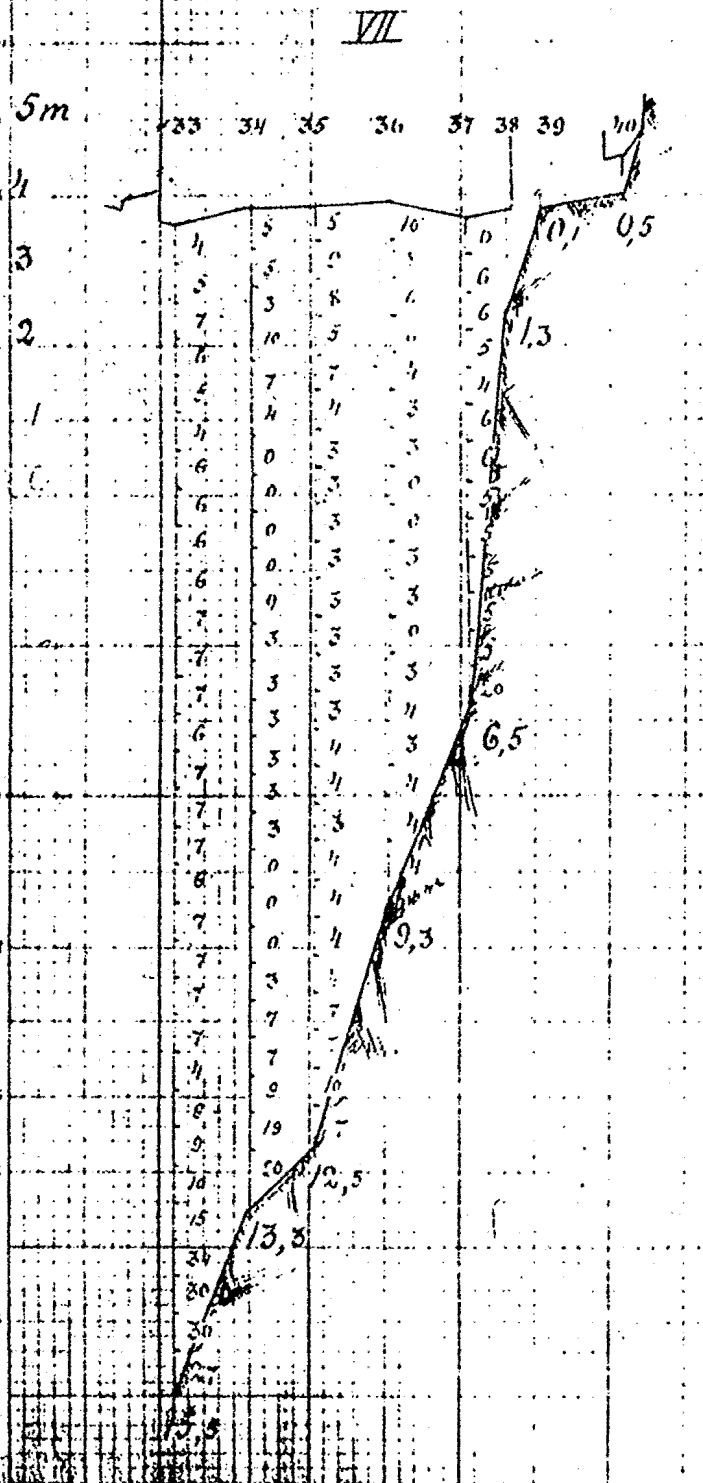
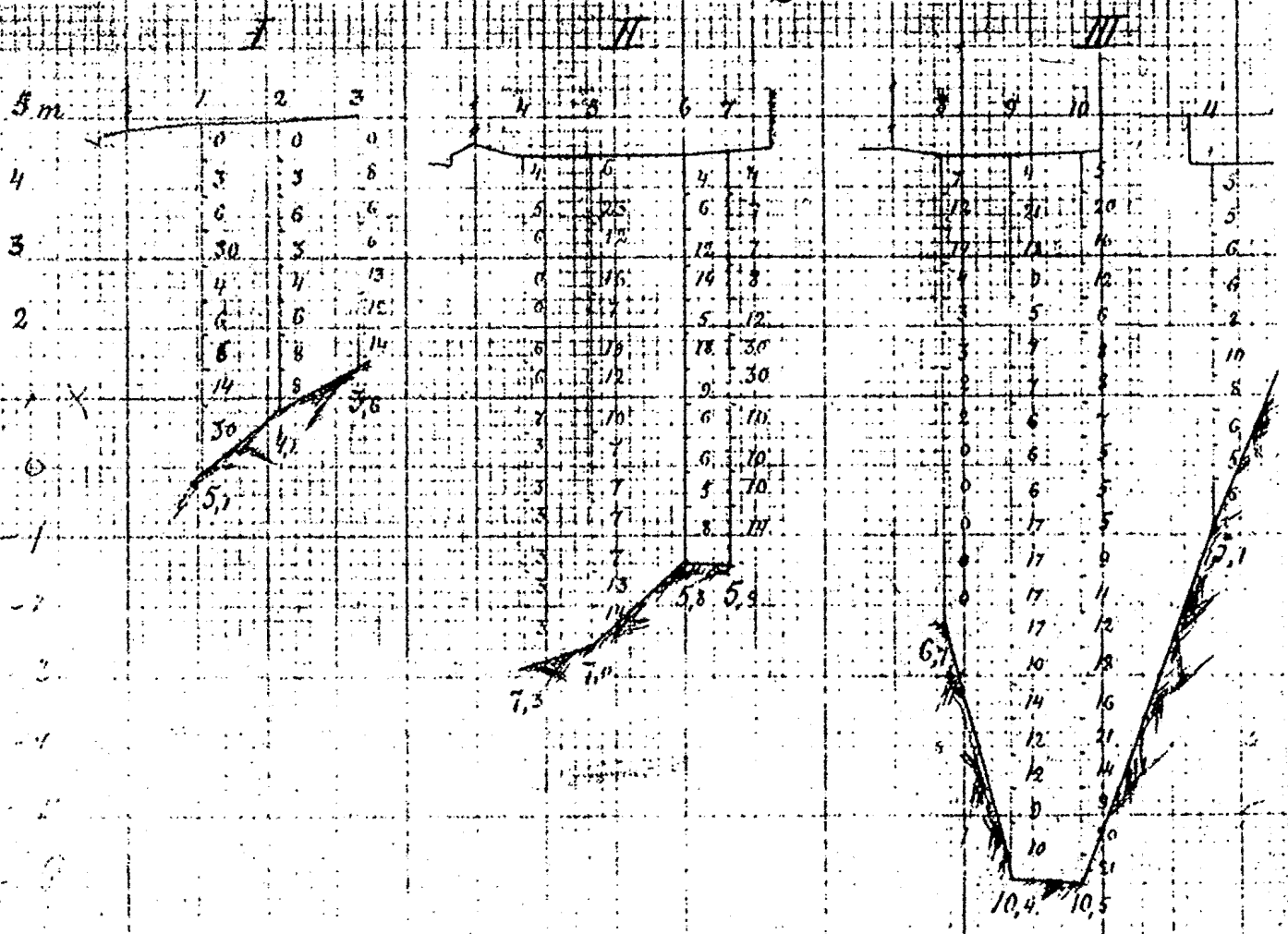
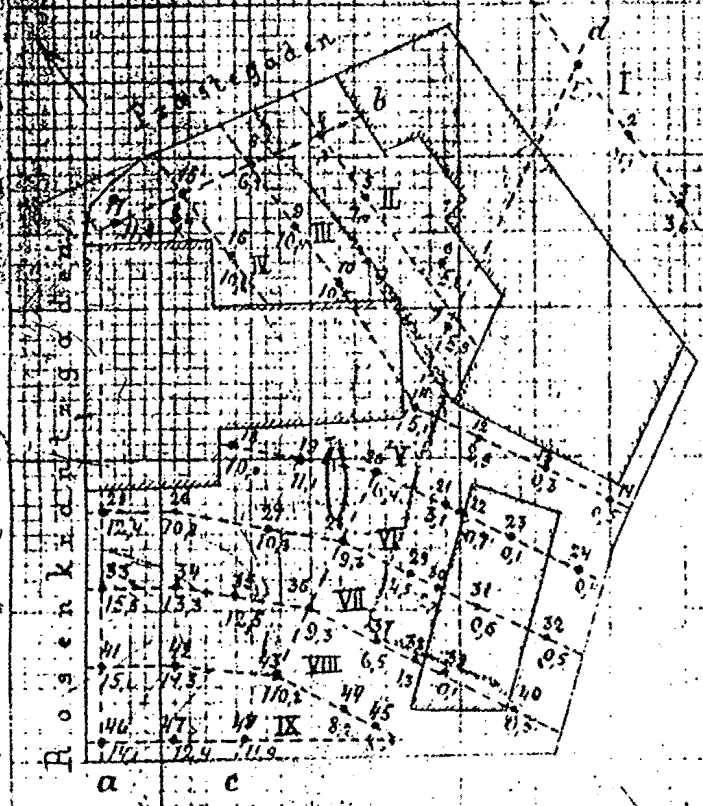
398

Rosenkrantz gt. 14

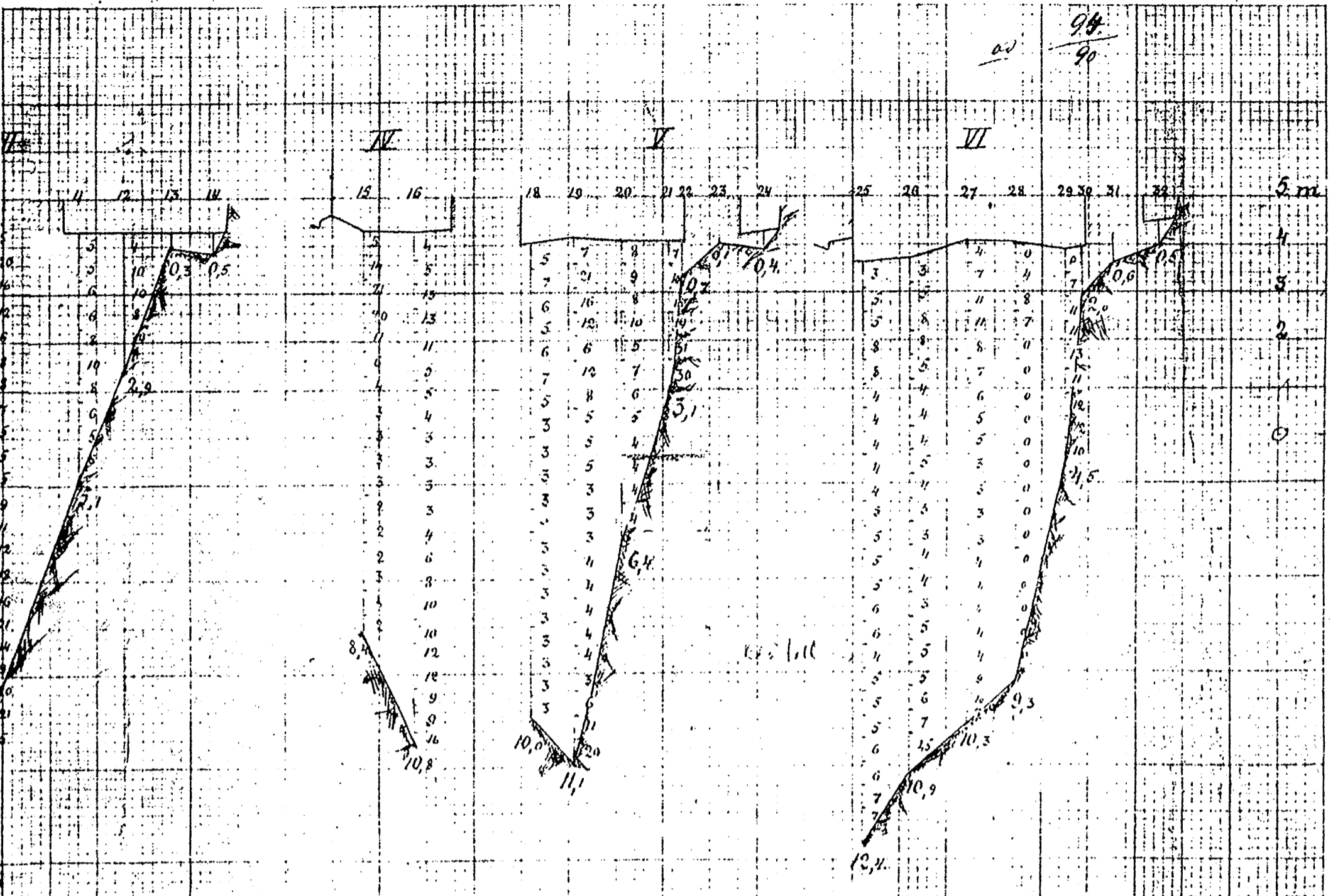
Trafo m.m.



# Grunduntersögelse Matr. No. 8 Præstegaden.

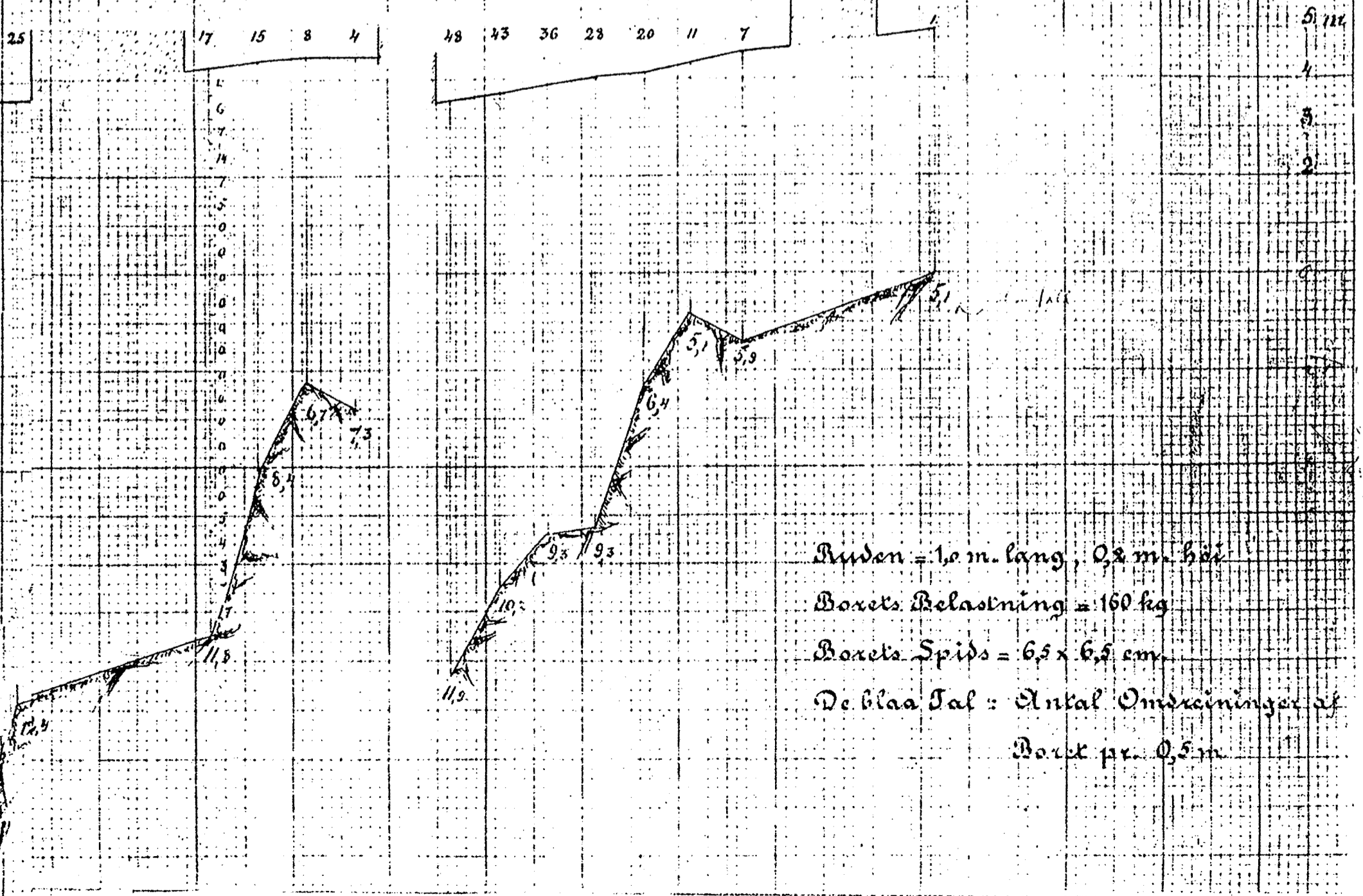


94.  
90



$\alpha - b$

$c - d$



Ruden = 1,0 m. lang, 0,2 m. hoi  
 Boxets Belasting = 160 kg  
 Boxets Spids = 6,5 x 6,5 cm  
 De blaa Jal : Antal Ondreiningen af  
 Boxet pr. 0,5 m



Grundboringskart  
over  
Rosenkrantzgaten 14. M:1:200.

- Betegnelser:
- 5.7 Terrenghøide
  - Terranghøide 1/2 m. økvr.
  - 4.7 Fjeldets kotehøide for anlagt fjeld i borplt.
  - Supponerte fjeldkoter  
do. med mindre sikre data
  - ↙ Strøk og fald i fjeld
  - ▬ Fjeld i dagen

898