

* NO: B3 III






560

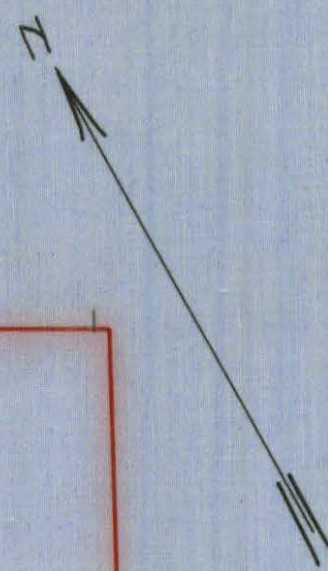
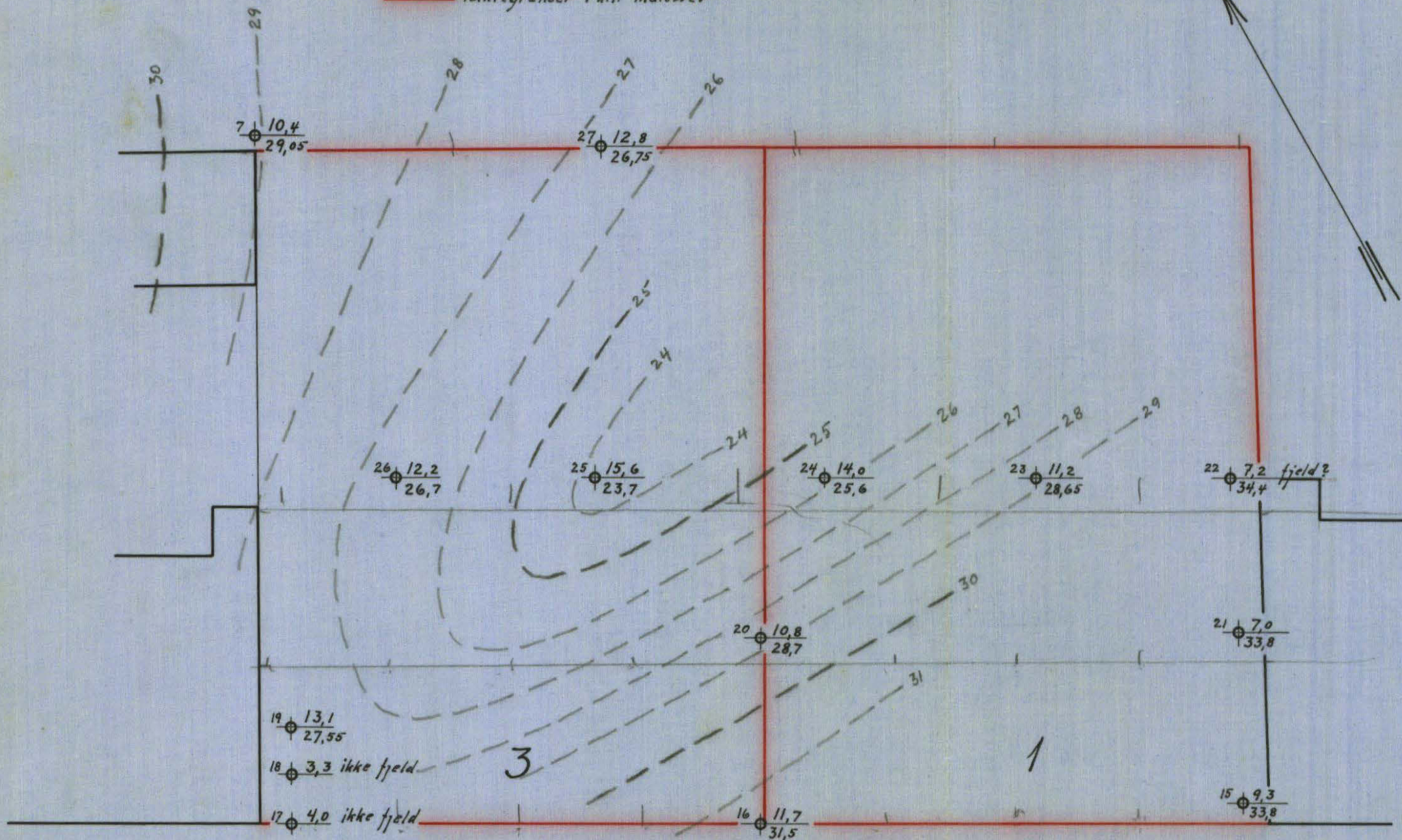
Bennechesgt. 1-3

Grundboringskart for tomterne nr. 1 og 3 Benneches gate

Bl. 560

M. 1:200

- Forklaring:
-  Dybde i meter fra terreng til antatt fjeld
 -  Kotehøide for ant. fjeld referert til byens ±0
 -  Supponerte fjeldkoter 1 m. ækv.
 -  44 Koter for gatens nuværende høide
 -  Tomtegrænser i.h.t. målebrev



43,5

B E N N E C H E S G A T E

44

Oslo, mai 1927
Oscar Kjør

P.F.