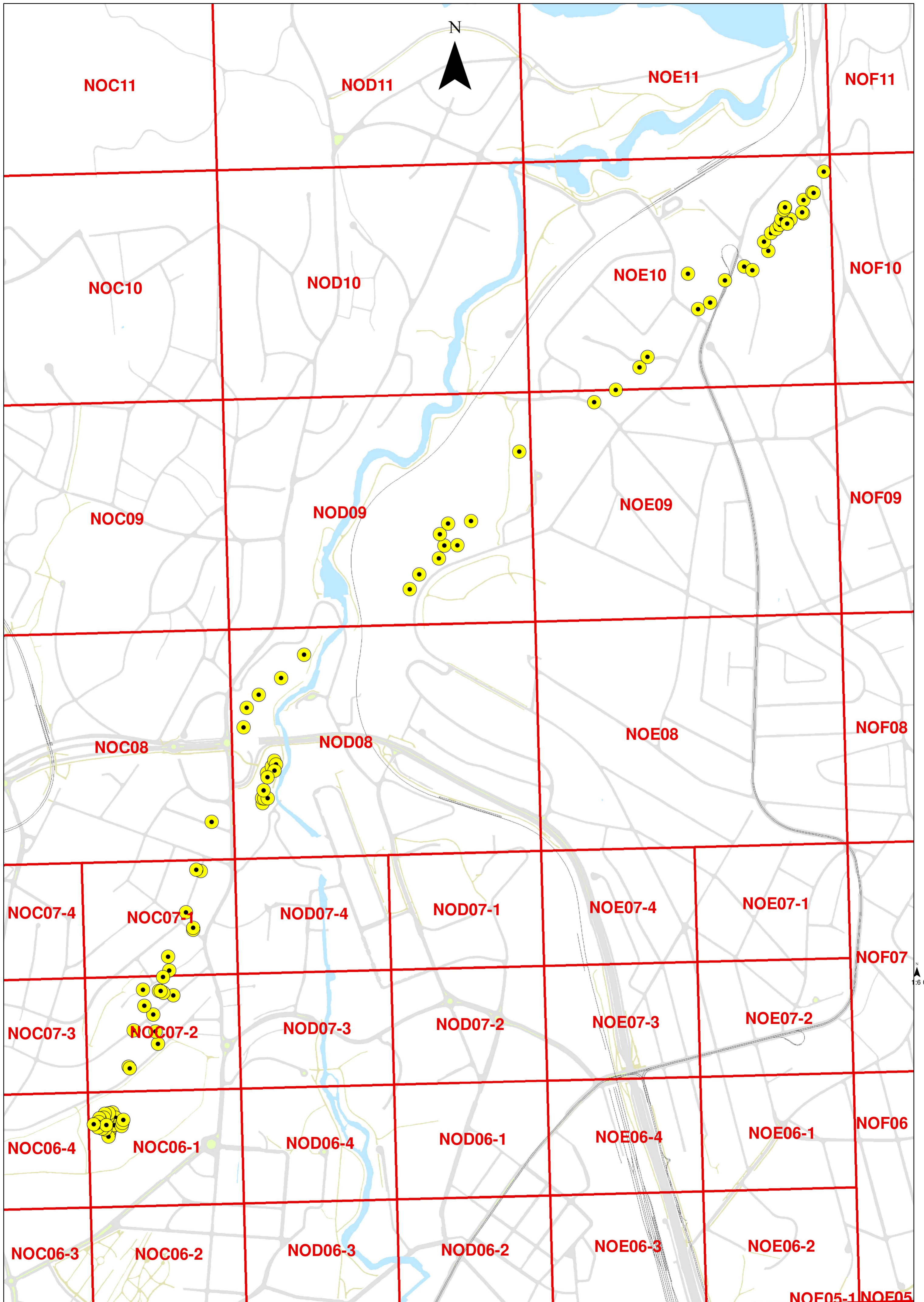


SWECO AS

160742

Voldsløkka - Maridalesvannet

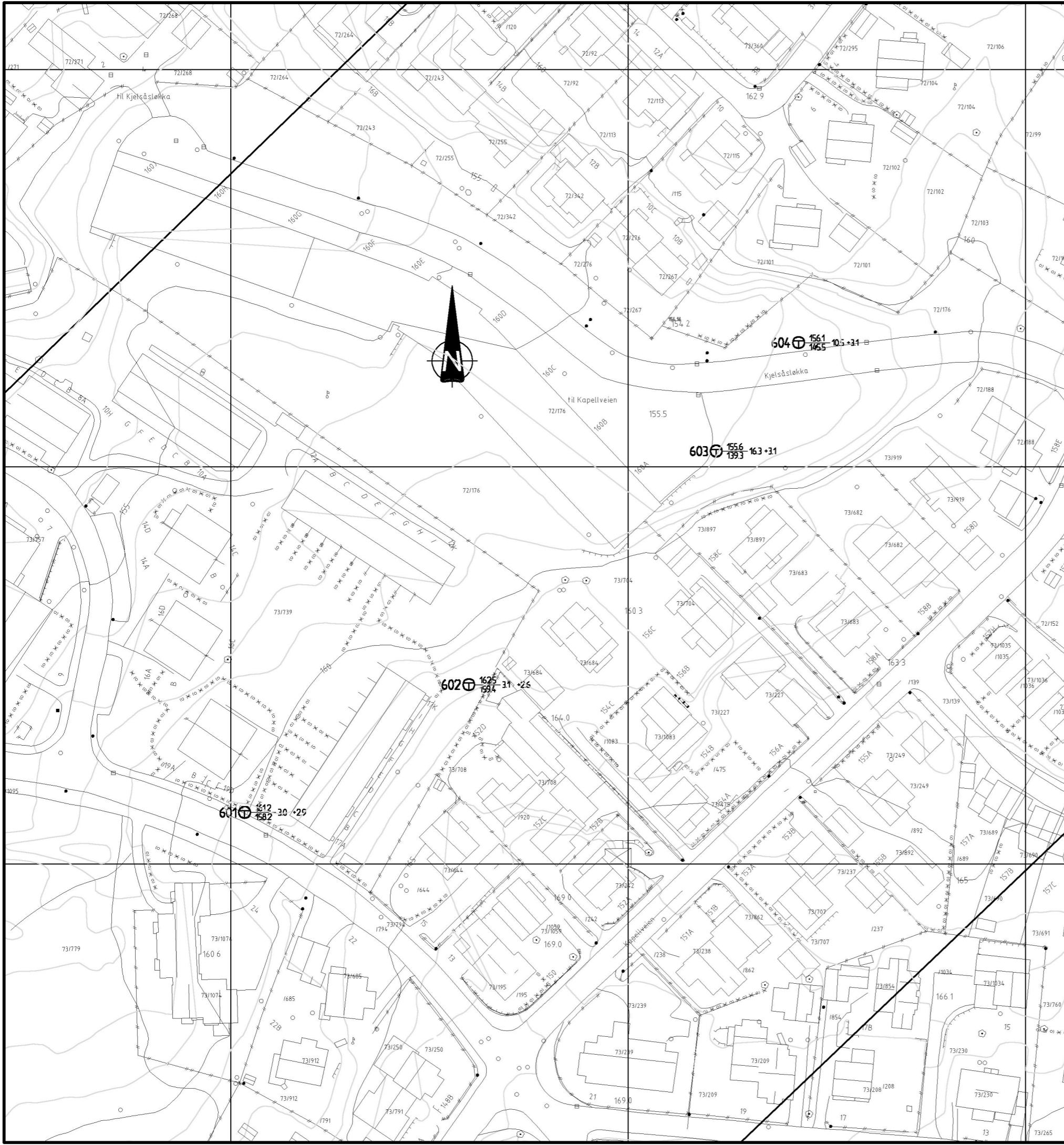
(Enkelte borplaner mangler)



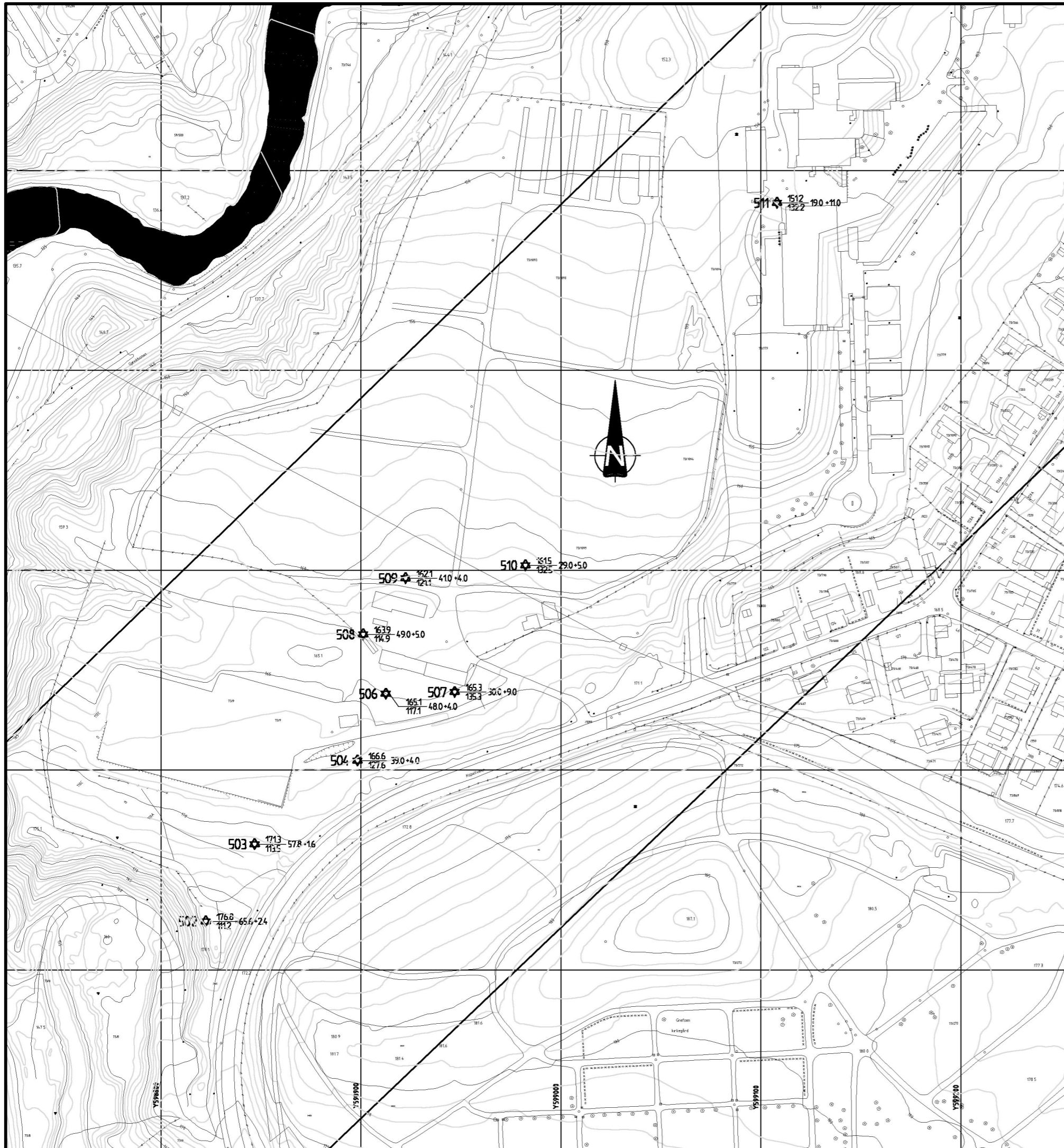
1:6 000

TEGNFORKLARING:

⊕ TOTALSONDERING



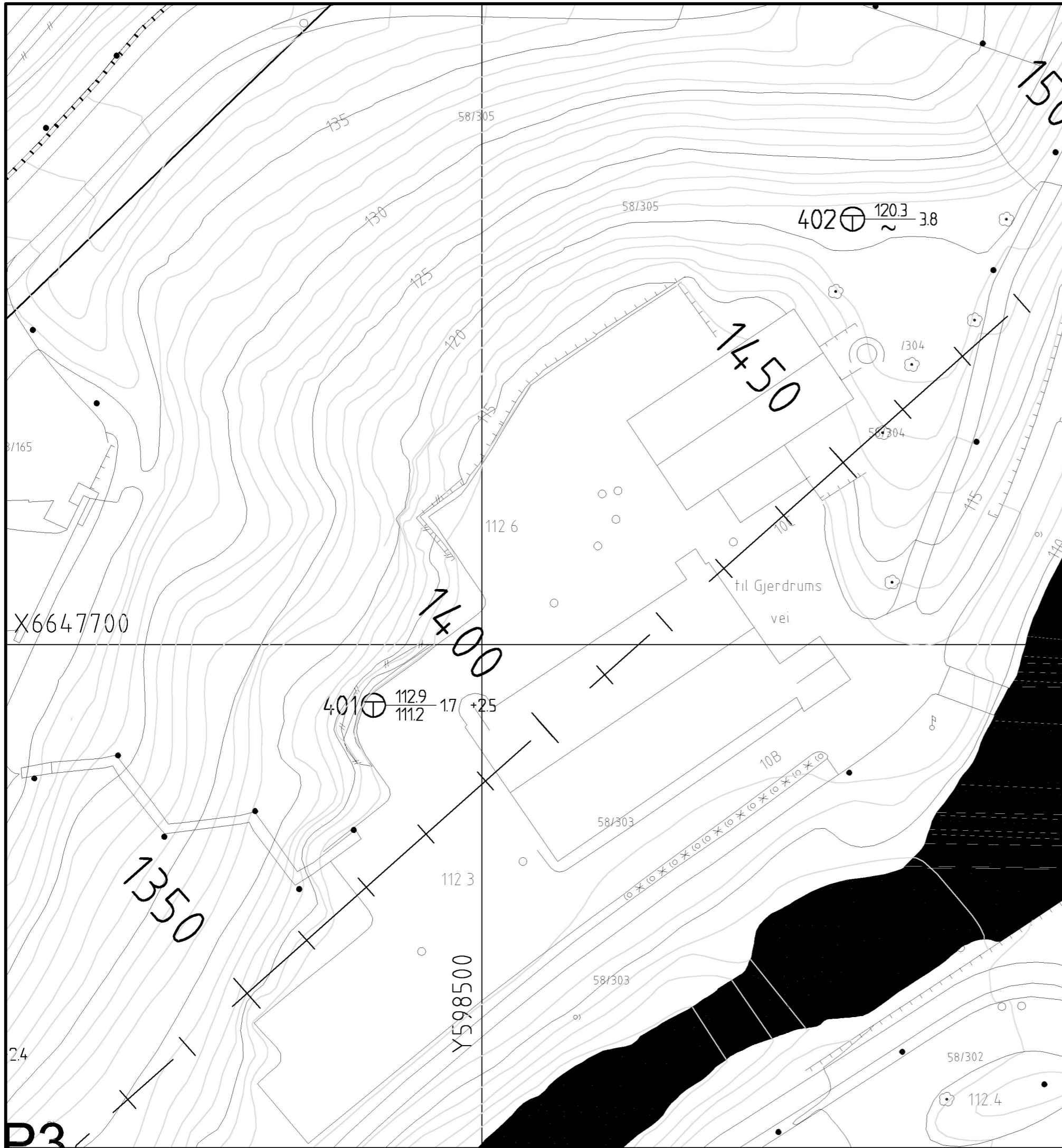
Status	Rev.	Endring			
OSLO KOMMUNE		Utført	Kontr.	Ansv.	Dato
VANN- OG AVLØPSETATEN		KMS	PST	PST	30.06.2009
VOLDSLLØKKATUNNELEN		Målestokk	Format		
		1:1000	A3		
GEOTEKNISKE UNDERSØKELSER		Oppdragsleder:			
BORPLAN		Øystein Stormo			
HAUGES VEI		Oppdragsnr.			
		160742			
SWECO		Disiplin:	Løpnummer:	Status	Rev.
SWECO Norge AS FORNEBUVEIEN 11, 1327 LYSAKER TLF.: 67 12 80 00 FAX.: 67 12 58 40		G		X	00



TEGNFORKLARING:


☆ FJELLKONTROLLBORING

Status	Rev.	Endring			
OSLO KOMMUNE VANN- OG AVLØPSETATEN VOLDSELLØKKATUNNELEN		Utført	Kontr.	Ansv.	Dato
		KMS	PST	PST	30.06.2009
		Målestokk	Format		
		1:2000	A3		
GEOTEKNISKE UNDERSØKELSER BORPLAN HAUGES VEI		Oppdragsleder: Øystein Stormo			
		Oppdragsnr. 160742			
SWECO		Disiplin:	Løpnummer:	Status	Rev:
SWECO Norge AS FORNEBUVEIEN 11, 1327 LYSAKER TLF.: 67 12 80 00 FAX: 67 12 58 40		G		X	00

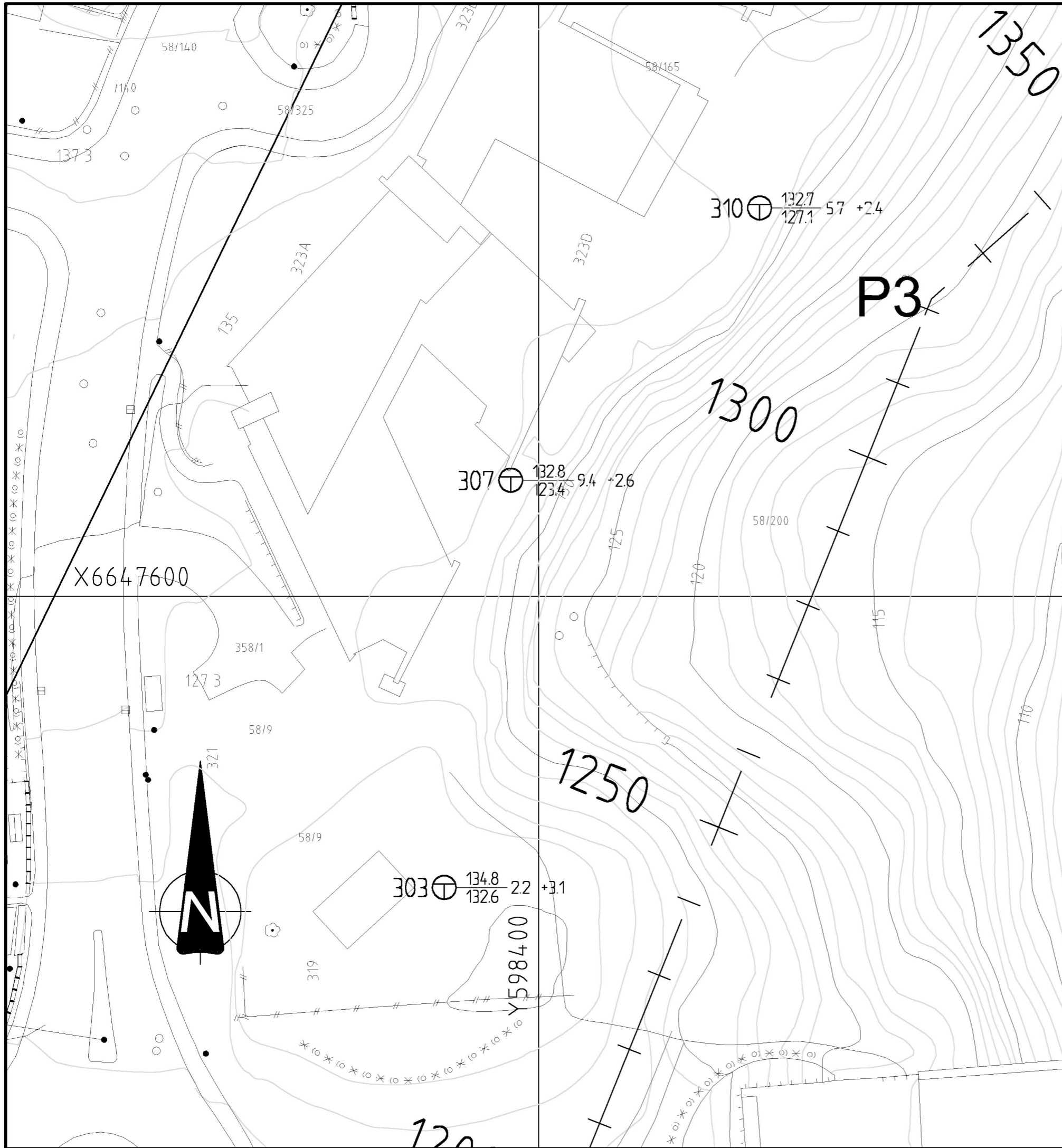


TEGNFORKLARING:

⊕ TOTALSONDERING


Status	Rev.	Endring	Utført	Kontr.	Ansv.	Dato
			KMS	PST	PST	30.06.2009
OSLO KOMMUNE VANN- OG AVLØPSETATEN VOLDSSLØKKATUNNELEN			Målestokk	Format		
			1500	A3		
GEOTEKNISKE UNDERSØKELSER BORPLAN HAUGES VEI			Oppdragsleder: Øystein Stormo			
			Oppdragsnr. 160742			
SWECO 			Disiplin:	Løpenummer:	Status	Rev:
			G		X	00

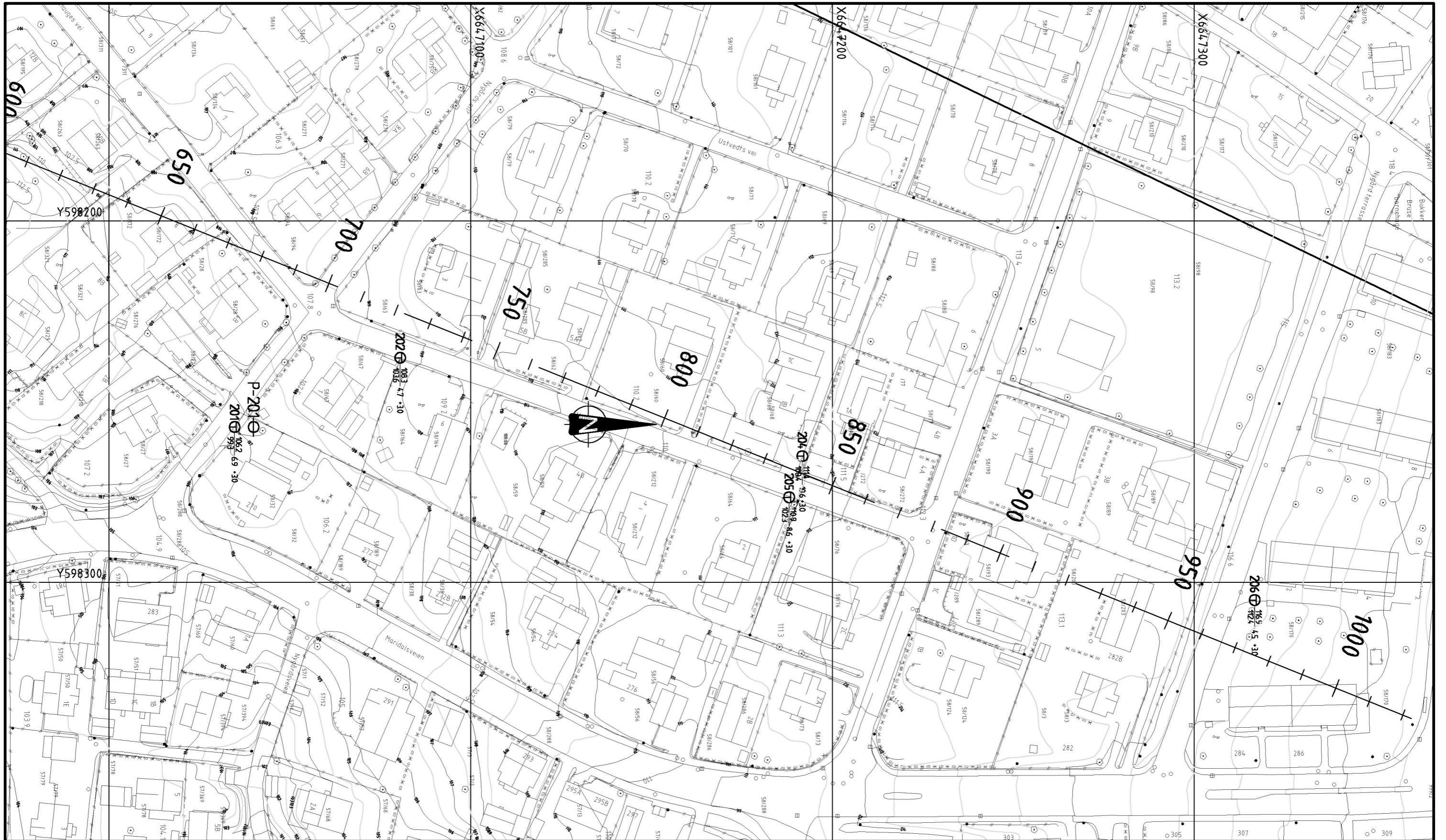
SWECO Norge AS
FORNEBUVEIEN 11, 1327 LYSAKER
TLF.: 67 12 80 00 FAX.: 67 12 58 40



TEGNFORKLARING:


⊕ TOTALSONDERING

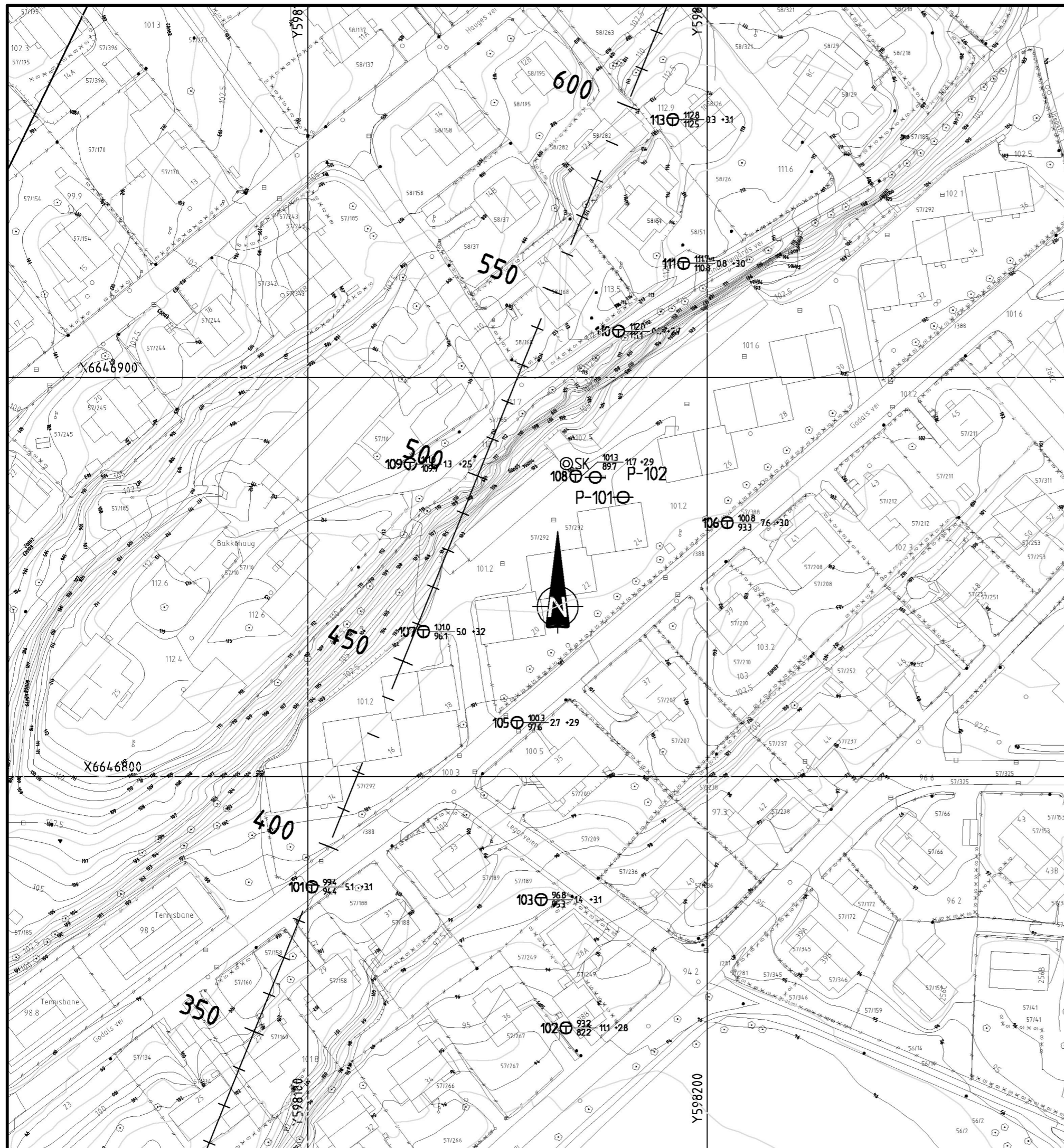
Status	Rev.	Endring	Utført	Kontr.	Ansv.	Date
			KMS	PST	PST	30.06.2009
OSLO KOMMUNE VANN- OG AVLØPSETATEN VOLDSELLØKKATUNNELEN			Målestokk 1500	Format A3		
GEOTEKNISKE UNDERSØKELSER BORPLAN HAUGES VEI			Oppdragsleder: Øystein Stormo			
			Oppdragsnr. 160742			
SWECO 			Disiplin: G	Løpenummer:	Status:	Rev: X 00
SWECO Norge AS FORNEBUVEIEN 11, 1327 LYSAKER TLF.: 67 12 80 00 FAX: 67 12 58 40						



TEGNFORKLARING:


⊕ TOTALSONDERING

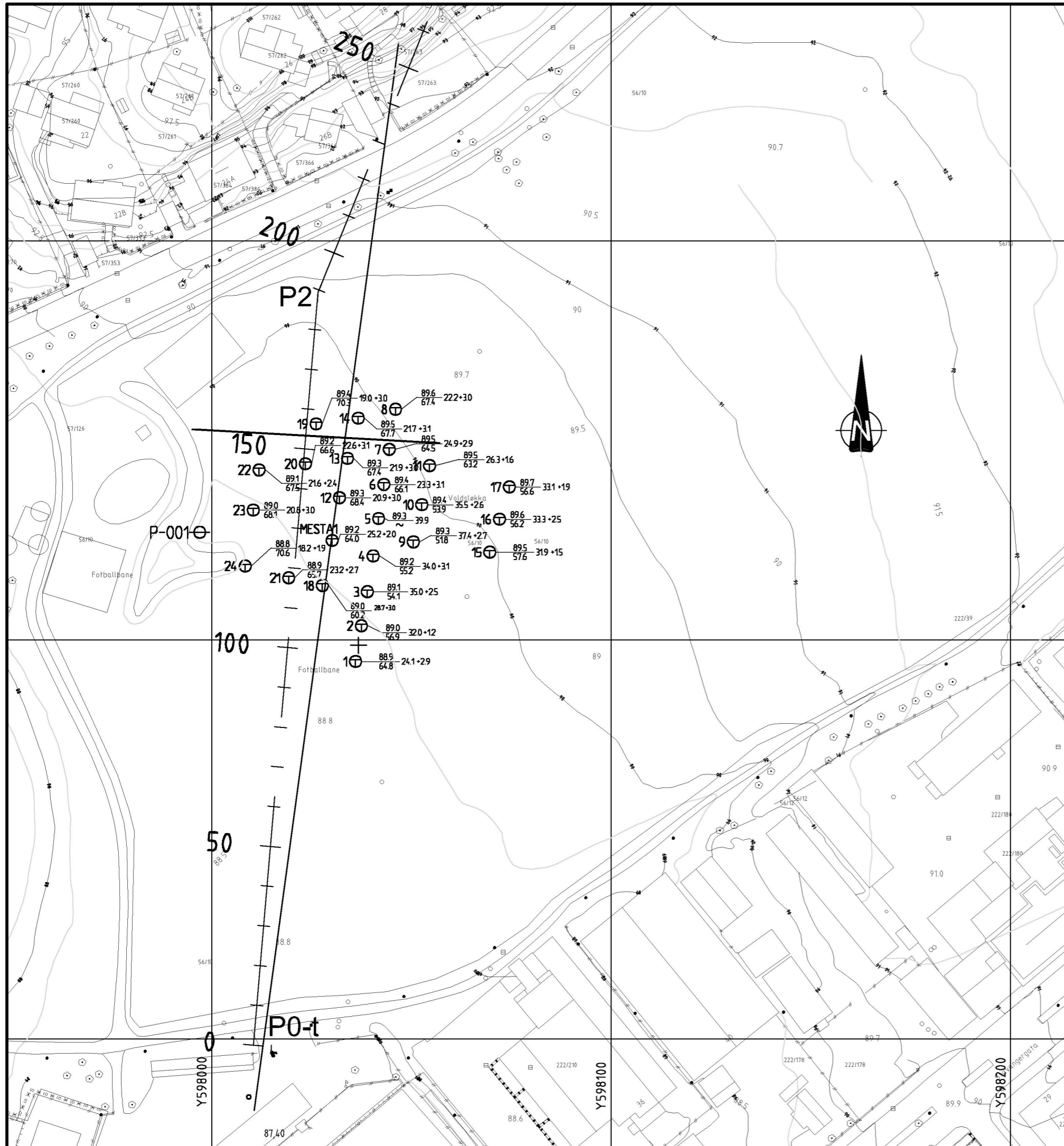
Status	Rev.	Endring	Utført	Kontr.	Ansv.	Dato
			KMS	PST	PST	30.06.2009
OSLO KOMMUNE VANN- OG AVLØPSETATEN VOLDSSLØKKATUNNELEN			Målestokk	Format		
			1:1000	A3		
GEOTEKNISKE UNDERSØKELSER BORPLAN HAUGES VEI			Oppdragsleder:	Oppdragsnr.		
			Øystein Stormo	160742		
SWECO 			Disiplin:	Løpenummer:	Status	Rev.
SWECO Norge AS FORNEBUVEIEN 11, 1327 LYSAKER TLF.: 67 12 80 00 FAX.: 67 12 58 40			G		X	00



TEGNFORKLARING:


- ⊕ TOTALSONDERING
- ⊙ SK SKOVLPRØVE

Status	Rev.	Endring		Utført	Kontr.	Ansv.	Dato
				KMS	PST	PST	30.06.2009
OSLO KOMMUNE VANN- OG AVLØPSETATEN VOLDSSLØKKATUNNELEN				Målestokk	Format		
				1:1000	A3		
GEOTEKNISKE UNDERSØKELSER BORPLAN GODALS VEI				Oppdragsleder:	Øystein Stormo		
				Oppdragsnr.	160742		
 SWECO Norge AS FORNEBUVEIEN 11, 1327 LYSAKER TLF.: 67 12 80 00 FAX: 67 12 58 40				Disiplin:	Løpenummer:	Status	Rev.
				G		X	00



TEGNFORKLARING:

- SEISMISK PROFIL
- ⊕ TOTALSONDERING
- + VINGEBORING

Status	Rev.	Endring			Utført	Kontr.	Ansv.	Date
OSLO KOMMUNE VANN- OG AVLØPSETATEN VOLDSSLØKKATUNNELEN					KMS	PST	PST	30.06.2009
					Målestokk 1:1000		Format A3	
GEOTEKNISKE UNDERSØKELSER BORPLAN VOLDSLØKKA					Oppdragsleder: Øystein Stormo			160742
					Oppdragsnr.			
SWECO 				Disiplin:	Løpnummer:	Status:	Rev:	
SWECO Norge AS FORNEBUVEIEN 11, 1327 LYSAKER TLF.: 67 12 80 00 FAX: 67 12 58 40				G		X	00	

Borhull	X	Y	Z	Metode	Stopp	Løsm	Fjell
Kolonne1	Kolonne2	Kolonne3	Kolonne4	Kolonne5	Kolonne6	Kolonne7	Kolonne8
1	6646494,681	598035,971	88,901	Total	94	24,08	2,95
2	6646503,605	598037,45	88,993	Total	94	32,05	1,17
3	6646512,156	598038,942	89,096	Total	94	35,03	2,47
4	6646521,115	598040,377	89,159	Total	94	33,97	3,05
5	6646530,479	598041,755	89,325	Total	90	39,9	
6	6646539,019	598043,075	89,393	Total	94	23,27	3,05
7	6646547,811	598044,426	89,462	Total	94	24,95	2,9
8	6646557,86	598045,997	89,595	Total	94	22,23	3
9	6646524,731	598050,613	89,256	Total	94	37,42	2,7
10	6646534,059	598052,738	89,389	Total	94	35,47	2,55
11	6646543,839	598054,672	89,467	Total	94	26,3	1,63
12	6646535,706	598031,969	89,251	Total	94	20,88	2,95
13	6646545,545	598033,989	89,35	Total	94	21,92	3
14	6646555,628	598036,673	89,458	Total	94	21,73	3,07
15	6646522,062	598069,6	89,512	Total	94	31,92	1,5
16	6646530,315	598072,045	89,584	Total	94	33,35	2,45
17	6646538,409	598074,514	89,69	Total	94	33,05	1,92
18	6646513,701	598027,705	88,972	Total	94	28,75	3
19	6646554,181	598026,117	89,365	Total	94	19,05	2,95
20	6646544,188	598023,439	89,242	Total	94	22,65	3,05
21	6646515,621	598019,255	88,895	Total	94	23,23	2,7
22	6646542,663	598011,838	89,075	Total	94	21,6	2,42
23	6646532,611	598010,385	88,951	Total	94	20,83	3
24	6646518,577	598008,374	88,795	Total	94	18,17	1,85
101	6646772,432	598101,069	99,437	Total	94	5,07	3,15
102	6646737,077	598164,675	93,225	Total	94	11,07	2,8
103	6646769,219	598158,438	96,751	Total	94	1,42	3,1
105	6646813,582	598152,439	100,349	Total	94	2,72	2,93
106	6646863,638	598205,071	100,819	Total	94	7,55	3,02

107	6646836,362	598128,998	101,049 Total	94	4,95	3,25
108	6646875,311	598167,117	101,305 Total	94	11,65	2,93
109	6646878,339	598125,687	111 Total	94	1,35	2,52
110	6646911,626	598177,829	111,963 Total	94	0,82	2,7
111	6646928,582	598194,13	111,665 Total	94	0,85	2,98
113	6646964,629	598191,415	112,784 Total	94	0,28	3,05
201	6647034,754	598256,996	106,226 Total	94	6,9	3,03
202	6647080,52	598237,851	108,31 Total	94	4,7	3
204	6647191,689	598265,083	111,077 Total	94	10,65	2,95
205	6647188,045	598276,449	110,943 Total	94	8,6	3
206	6647316,741	598304,873	116,883 Total	94	4,5	3
303	6647563,627	598388,32	134,751 Total	94	2,17	3,08
307	6647614,661	598396,648	132,786 Total	94	9,43	2,57
310	6647648,78	598427,826	132,738 Total	94	5,65	2,37
401	6647692,417	598486,421	112,908 Total	94	1,73	2,47
402	6647753,351	598546,438	120,289 Total	90	3,85	
502	6647924,43	598822,39	176,8 Fjell	94	65,6	2,4
503	6647963,07	598846,89	171,3 Fjell	94	57,8	1,6
504	6648004,91	598898,3	166,6 Fjell	94	39	4
506	6648038,28	598912,44	165,1 Fjell	94	48	4
507	6648039,18	598946,92	165,3 Fjell	94	30	9
508	6648067,99	598901,16	163,9 Fjell	94	49	5
509	6648096,05	598922,43	162,1 Fjell	94	41	4
510	6648102,6	598982,27	161,5 Fjell	94	29	5
511	6648283,89	599108,05	151,2 Fjell	94	19	11
601	6648413,083	599303,651	161,183 Total	94	3	2,95
602	6648445,245	599360,078	162,457 Total	94	3,08	2,62
603	6648504,063	599422,311	155,614 Total	94	16,27	3,05
604	6648531,363	599443,044	156,081 Total	94	10,55	3,05
701	6648656,089	599574,884	167,848 Total	94	11,45	2,9
702	6648673,139	599606,792	167,774 Total	93	17,8	0

703	6648731,331	599645,068	167,684 Total	94	12,82	2,57
704	6648748,553	599548,796	163,321 Total	94	4,88	3,05
803	6648767,52	599695,333	169,115 Total	94	3	2,82
804	6648757,81	599716,989	170,344 Total	94	4,25	3,22
806	6648808,252	599758,49	166,71 Total	94	16,7	3
807	6648832,172	599747,275	166,035 Total	94	11,57	3,05
808	6648854,895	599765,583	165,691 Total	93	22,5	0
809	6648865,466	599779,247	165,687 Total	93	29,63	0
810	6648890,553	599816,64	165,7 Total	94	41,5	2,17
811	6648876,305	599788,446	165,832 Total	94	41,25	2,95
812	6648921,058	599800,696	164,024 Total	94	38,28	2
813	6648906,25	599849,512	163,998 Total	94	29,58	3,02
814	6648941,181	599850,475	164,388 Total	90	24,65	
815	6648961,245	599873,561	164,812 Total	90	22,52	
816	6649015,336	599903,464	169,076 Total	94	4,85	2,95
817	6648890,93	599792,597	165,628 Total	94	42,05	3,05
818	6648879,343	599807,711	166,089 Total	94	42,03	2,97
10B	6647450,552	598469,239	100,627 Total	94	12,2	0
11B	6647433,292	598450,914	101,006 Total	94	3,05	9,77
1B	6647365,837	598438,322	106,123 Total	90	2,85	
2B	6647378,574	598436,595	105,742 Total	93	2,05	0
3B	6647377,816	598442,229	103,484 Total	94	1,33	2,3
4B	6647378,328	598451,169	101,587 Total	93	4,18	0
5B	6647398,949	598440,892	105,356 Total	94	0,98	2,85
6B	6647444,56	598449,443	104,283 Total	94	9,07	2,82
7B	6647460,892	598461,963	103,459 Total	94	11,63	2,25
8B	6647476,131	598468,643	105,306 Total	94	2,08	2,2
9B	6647466,937	598473,114	101,735 Total	94	12	2,1
MESTA1	6646524,937	598030,132	89,246 Total	94	25,23	2,05
P-001	6646527	597997	0 PZ	90	0	
P-003	6646673	598091	0 PZ	90	0	

P-004	6646677	598088	0 PZ	90	0
P-101	6646870	598179	0 PZ	90	0
P-102	6646875	598172	0 PZ	90	0
P-201	6647040	598257	0 PZ	90	0
P-801	6648916	599799	0 PZ	90	0
P-802	6648922	599802	0 PZ	90	0
P-803	6648909	599847	0 PZ	90	0
P-804	6648960	599877	0 PZ	90	0