

\* NO: B1<sup>II</sup>

758

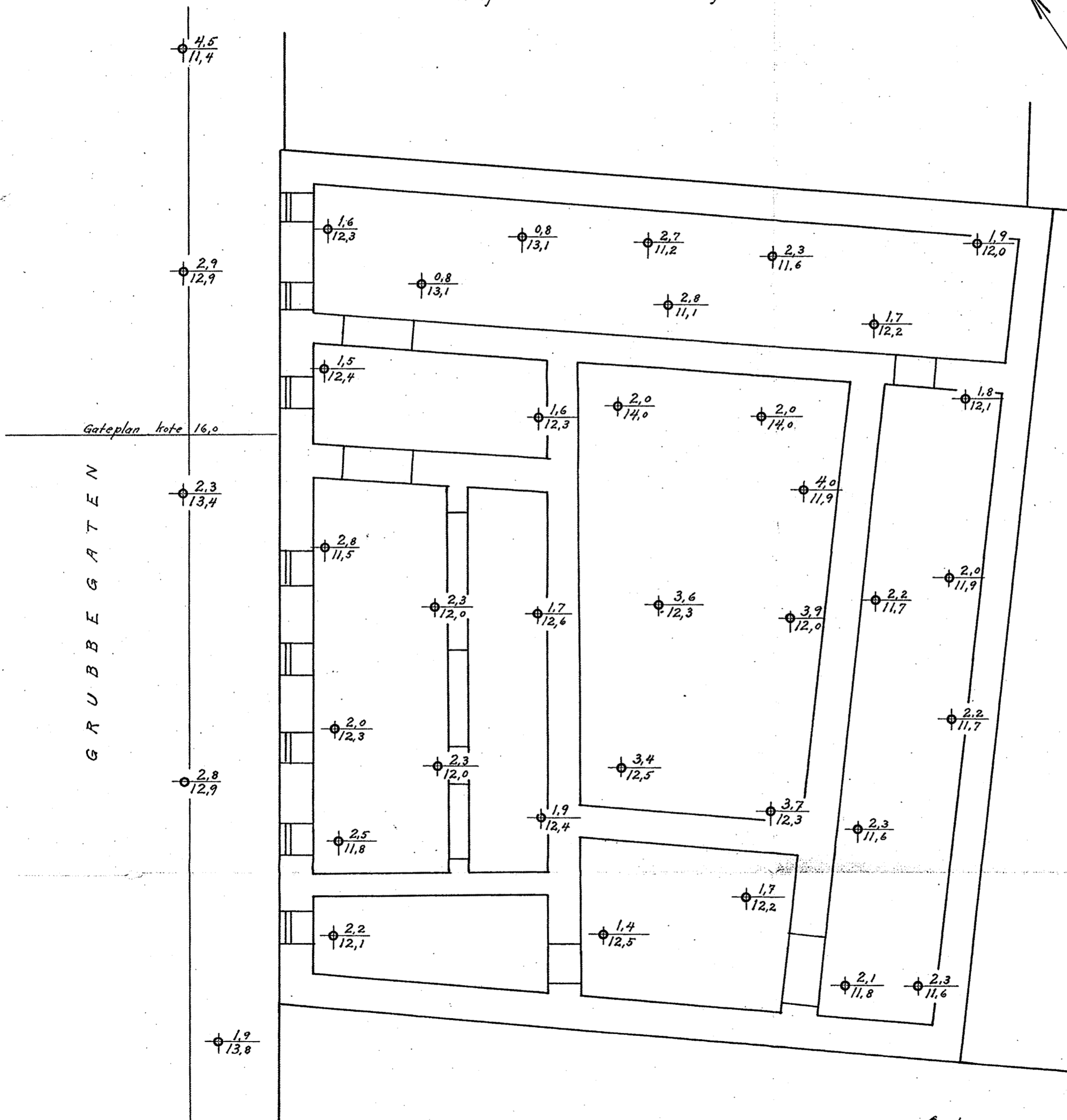
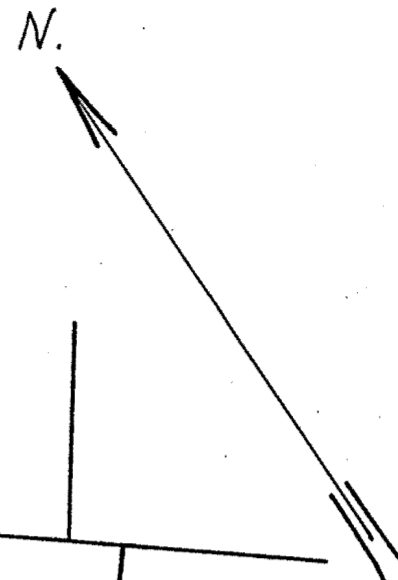
Grubbegaten 2

827  
 Grunnboringskart for Grubbegaten nr. 2

Bl. 758

M. 1:100

Forklaring:  $\frac{4,5}{11,4}$  dybde i meter fra terreng eller kjellergrv til fjell  
 $\frac{11,4}{11,4}$  fjelllets kotehöide referert til byens höidemerker.



Oslo, 16. mars 1929

Oscarberg

19.4