

\*NO: D3 II

1814

Trondhyems vn. ~~84~~-86

TRONDHJEMSVEIEN 86-88.

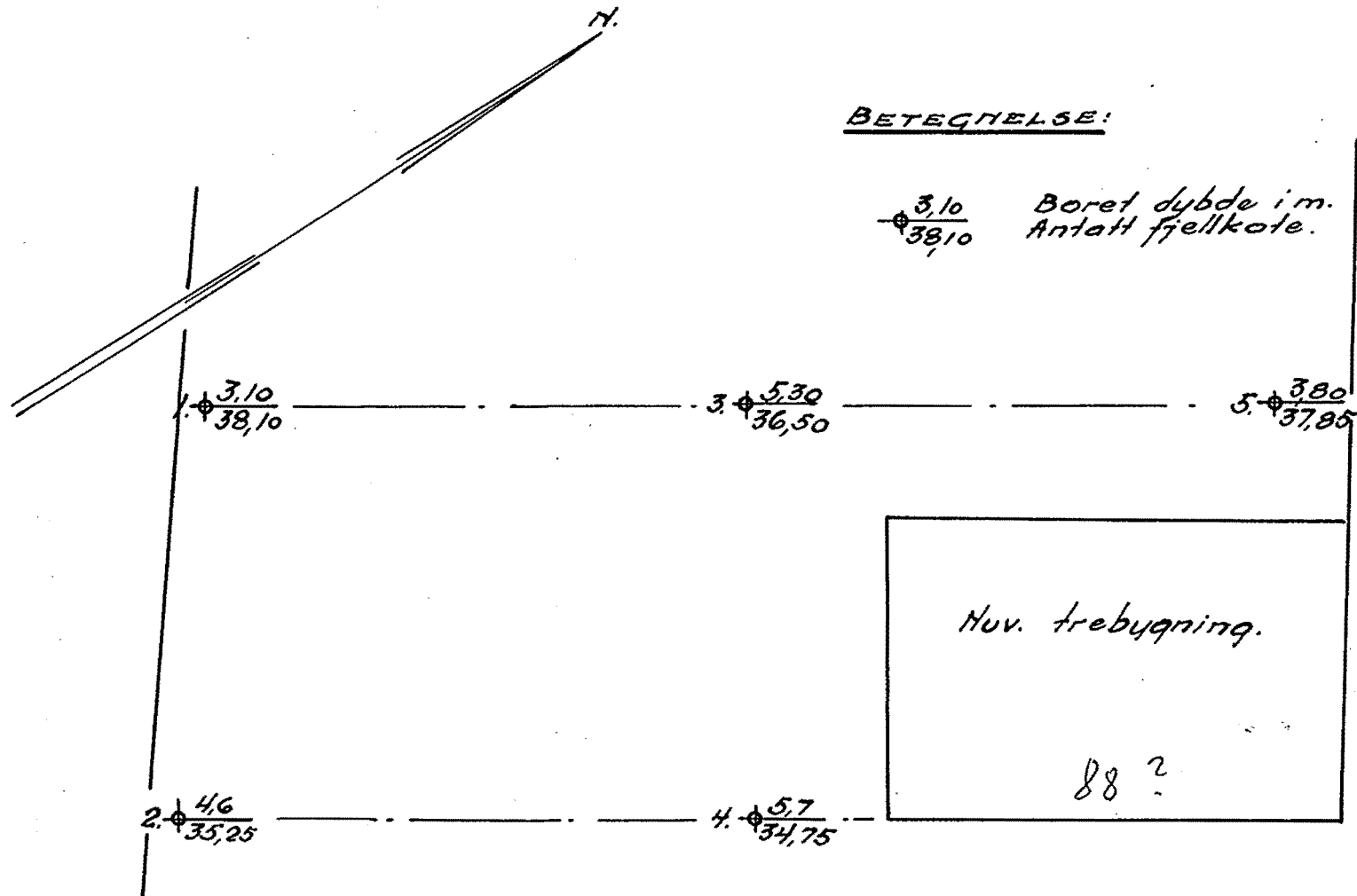
BL. 1814.

BORINGS-SKISSE.

1:200.

BETEGNELSE:

$\frac{3,10}{38,10}$  Boret dybde i m.  
Antatt fjellkote.



Oslo 7/10-36

*W. Lind*