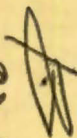


N O T E B Y

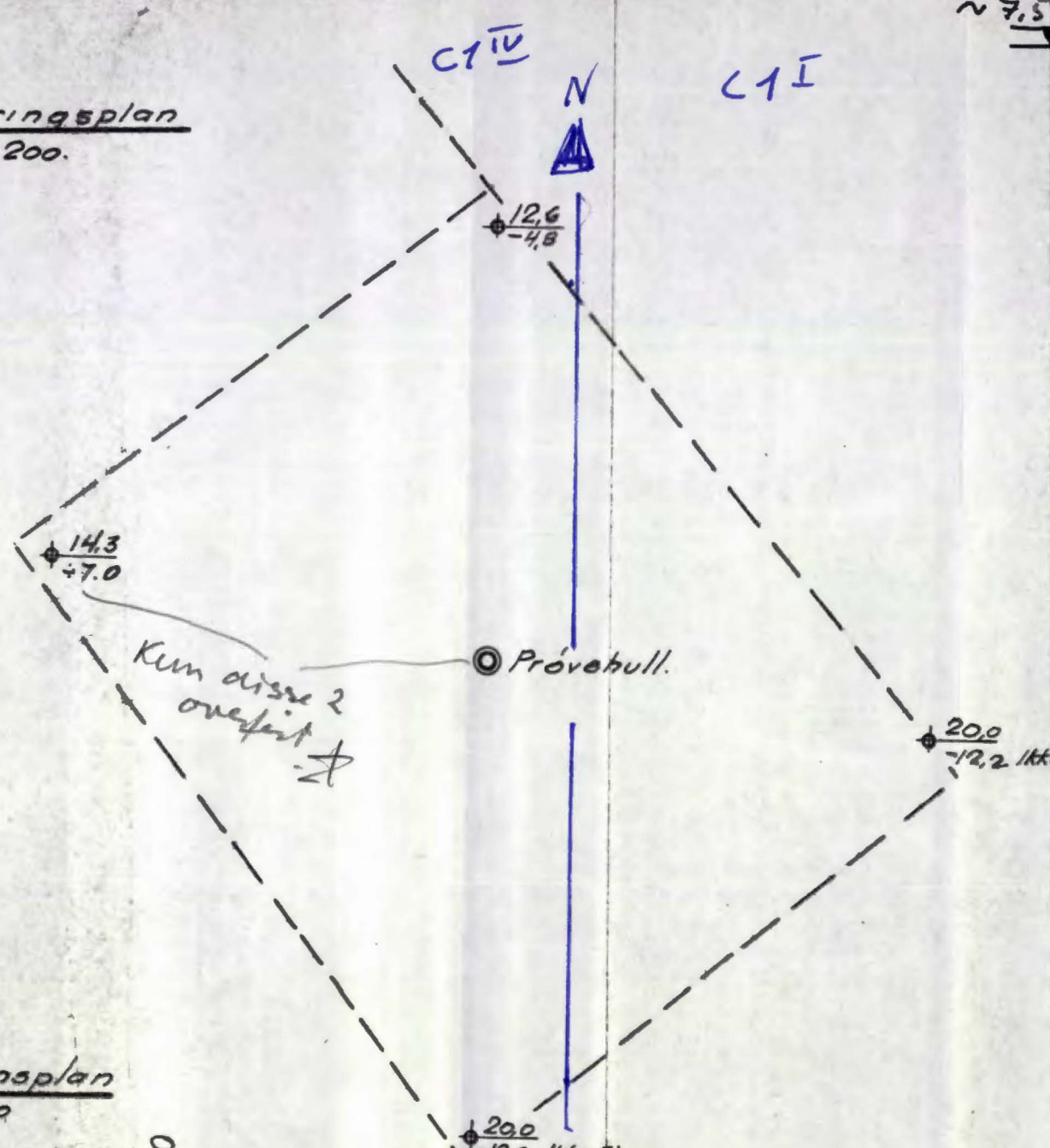
598

Calmeyersgate 8 B

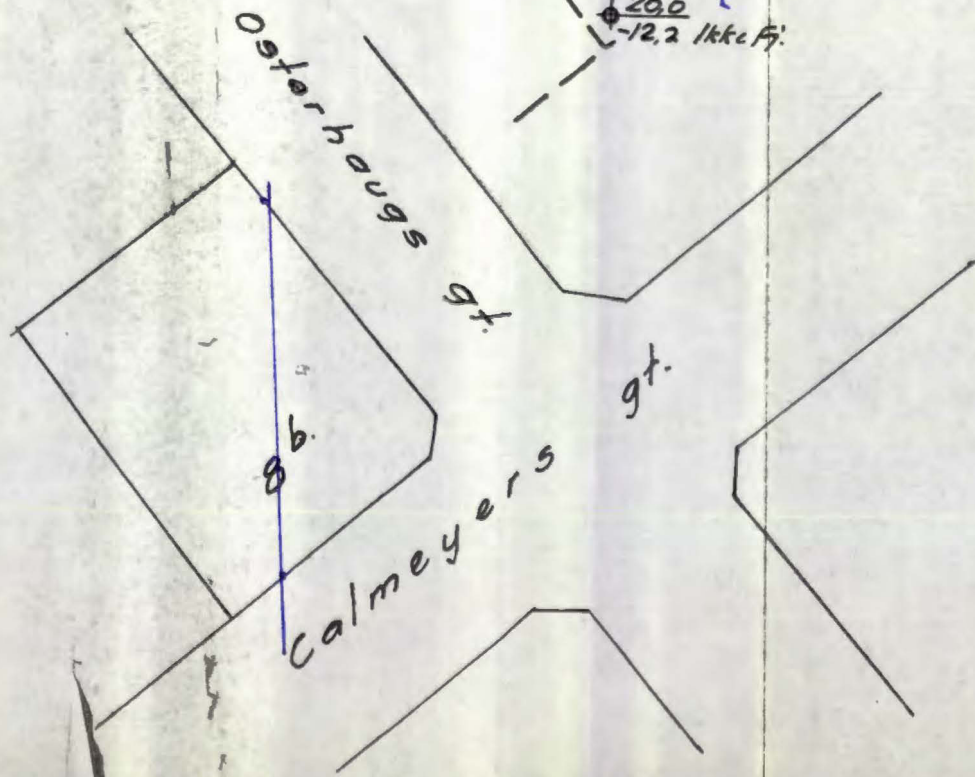
NO: C 1 12  
mai 86



Grunnboringsplan  
1:200.



Situasjonsplan  
1:500



PRØVESERIE

Dyp i m	V.	H <sub>3</sub>	H <sub>1</sub>	F.	O.	K.	pH.	Anm.
1 <sup>m</sup>								
2 <sup>m</sup>	41,1		1,0	21	1,3		7,5	Ler og grus.
3 <sup>m</sup>	47,4	241	20	37	1,8	4,0	8,0	Fast, ren ler
4 <sup>m</sup>	48,9	158	20	40	1,3	3,2	8,0	"
5 <sup>m</sup>	50,6	98	20	43	1,2	2,2	8,0	Seig, blå ler
6 <sup>m</sup>	50,7	153	15	42	1,2	3,2	8,0	Fast, ren ler
7 <sup>m</sup>	52,5	153	20	46	0,8	3,4	8,0	"
8 <sup>m</sup>	50,4	168	34	46		3,9	8,0	"
9 <sup>m</sup>	48,1	140	36	43		3,4	8,0	"
10 <sup>m</sup>	45,5	120	36	37		3,0	8,0	"
11 <sup>m</sup>								
12 <sup>m</sup>	49,5	149	27	43		3,5	8,0	"
13 <sup>m</sup>								
14 <sup>m</sup>	51,8	127	20	45		3,1	8,0	"
15 <sup>m</sup>								
16 <sup>m</sup>	48,0	124	27	41		3,0	8,0	"
17 <sup>m</sup>								
18 <sup>m</sup>	47,5	172	27	40		4,0	8,0	"
19 <sup>m</sup>								
20 <sup>m</sup>								

Betegnelse.

- V = Vannvolum i %
- H<sub>3</sub> = Relativ fasthet i uomrørt tilstand.
- H<sub>1</sub> = " " i omrørt " "
- F = Relativ finhet
- K = Skjærfasthet i tonn pr m<sup>2</sup>.
- O = Humusinnhold i %
- pH = Jordbunnens surhetsgrad.

12,6 Boret dybde i m.  
4,8 Antatt fjellkote.

NO: C1 IV

NORSK TEKNISK BYGGERONTROLL OSLO	
ANLEGG:	Calmeyers gt. 8 <sup>b</sup> .
DATUM	23/5 1939
Grunnundersøkelser	
NO.	598.
Divon	