

*SO: B1^I

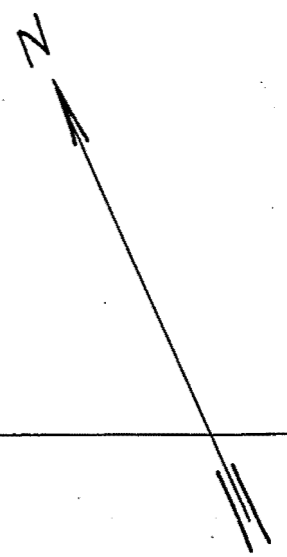
632

Nedre Slotsqft 10 B
~ Karl Johansgt

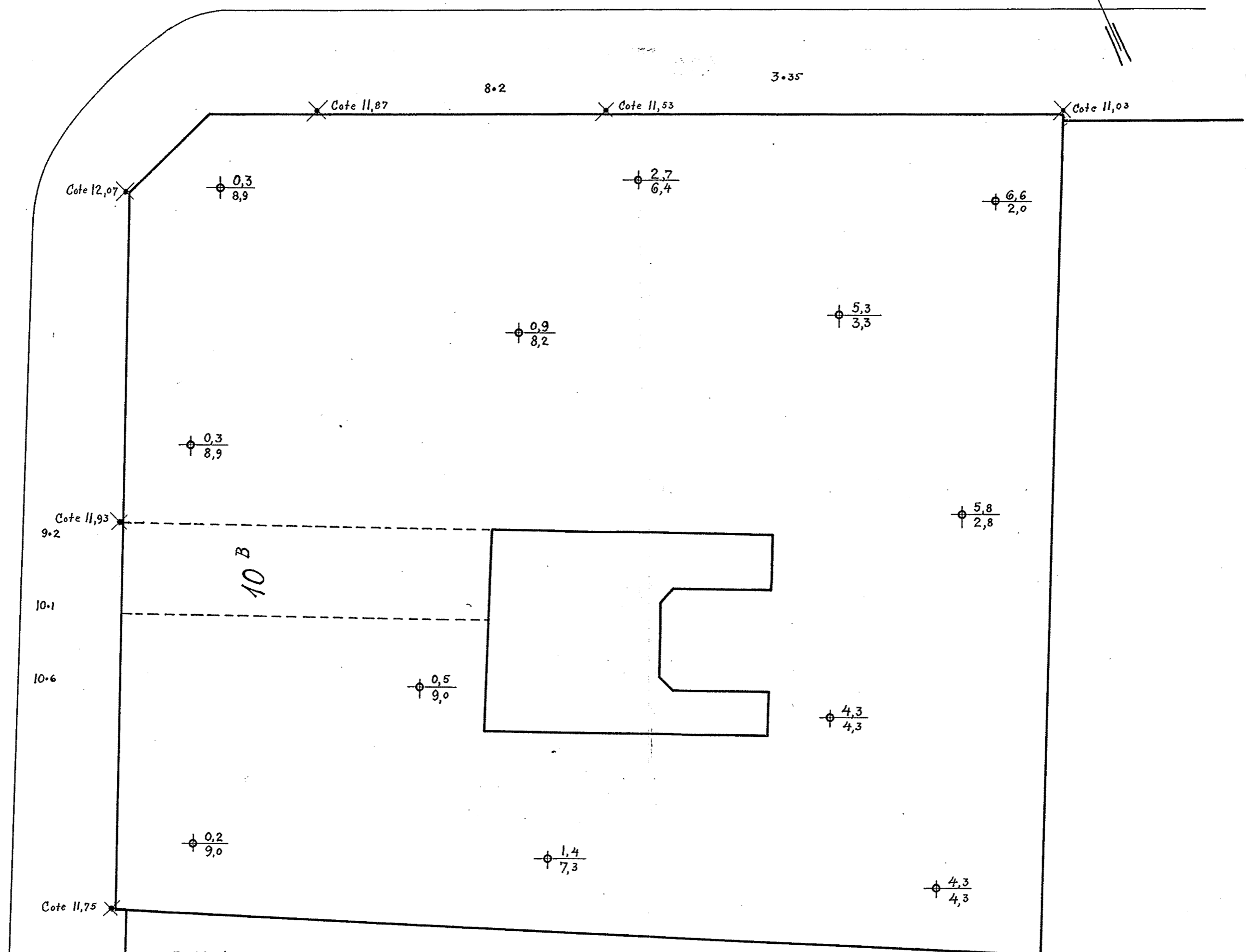
Grundboringskart for Nedre Slotsgate nr. 10^B
M. 1:100

Bl. 632 ✓

KARL JOHANS GATE



NEDRE SLOTSGATE



Forklaring: $\oplus \frac{1,4}{7,3}$ boringens dybde i meter fra kjeldergulv
 $\oplus \frac{7,3}{7,3}$ kotehöide for antatt fjeld
 Höiderne refererer sig til byens F.M.
 9.2 ældre boring. Fjeldets kotehöide angitt

Oslo, desbr. 1927
Aschberg

84