

N^o: B1 IV

1945

St. Olavs plass

St. Olavs plass 1.

Bl. 1945.

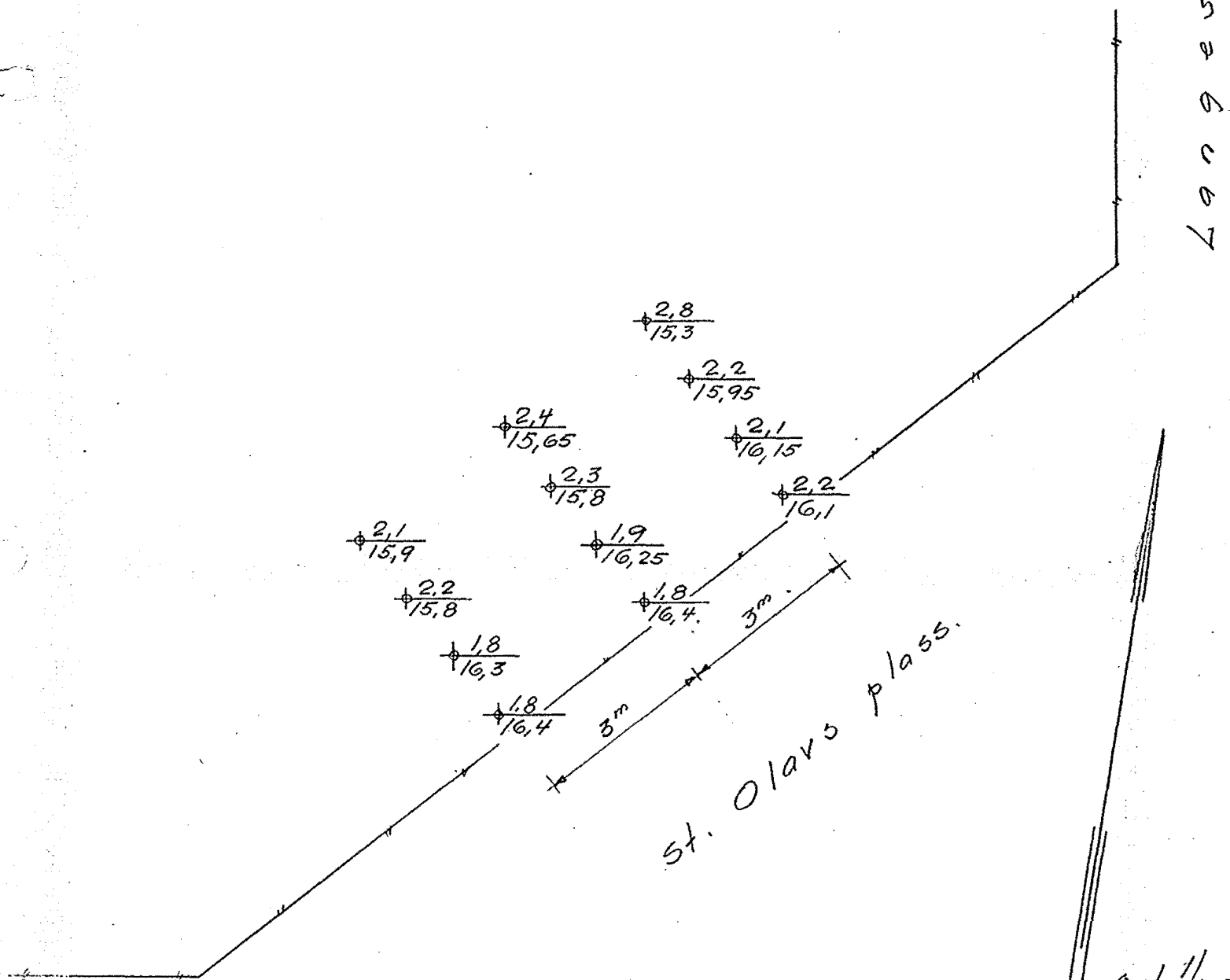
Borings-skisse.

1:100.

Betegnelse:

$\frac{2,1}{15,9}$ Boret dybde i m.
Antatt fjellkote.

NB! Se forøvrig bl. 1812.



Oslø 1/12-37
Oscarhagen
Burd