

429N

NOL7

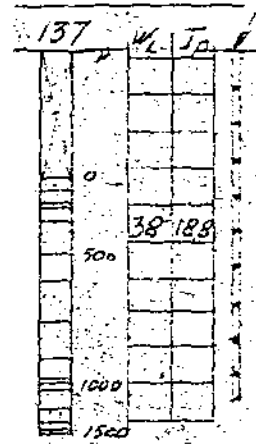
M=1:200

430N

NOTE BY 2366
1953

Proveserie XXXIII

Proveserie XXXIV



Dep. m	W	V	F	H ₁
1.0	274	378		
2.0	244	403		
3.0	256	416		
4.0	270	428	34	58
5.0	309	462	42	53
6.0	309	462	40	38
7.0	331	478	42	36
8.0	275	424	(28)	10
9.0	237	390	25	15
9.7	162	308		

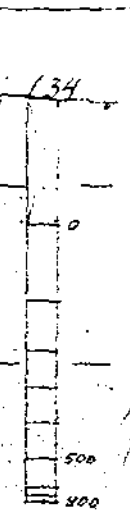


H ₂	K	O	X	Merknad
		sp	205	Hegal fast tørrsk.
		08	205	— " —
1750	1.0	204		— " —
189	4.3	08	201	Stiv homogen leire
313	5.7	sp	195	— " — m/sandk.
230	4.8	08	195	— " —
189	4.3	08	191	Homog. leire m/sandk.
37	(09)	sp	197	H. ale leire med sand
296	(5.5)	*	203	leire m/mos. stein
		*	213	Finmp, mjällig



W	V	F
217	373	
231	390	
205	339	
320	442	43
224	383	(27)
324	475	41
331	478	41
335	484	42
221	374	(23)
274	425	30
256	376	

Dep. m	H ₁	H ₂
1.0		
2.0		
3.0		
4.0	46	296
5.0	40	241
6.0	36	267
7.0	34	210
8.0	34	230
9.0	15	389
10.0	17	189
10.5		



K	O	X	Merknad
06	209		Hegal fast tørrsk.
06	207		— " —
06	200		— " —
5.5	08	194	Stiv homogen leire
5.0	sp	209	— " —
5.2	"	193	— " —
4.6	"	192	— " —
4.8	"	192	— " —
16.3		206	Homog. og leire
14.3	"	199	Homog. leire
		209	Med sand m/leirlag