

429N

NOL7

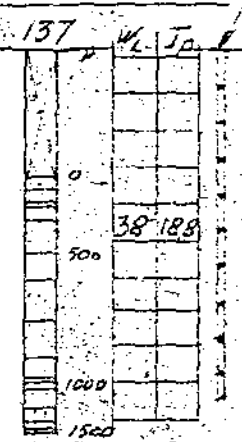
M=1:200

430N

NOTE BY 2366
1953

Proveserie XXXIII

Proveserie XXXIV



Depth (m)	W	V	F	H1
1.0	294	378		
2.0	244	403		
3.0	256	416		
4.0	270	428	34	58
5.0	309	462	42	53
6.0	309	462	40	38
7.0	331	478	42	36
8.0	273	424	(28)	10
9.0	237	390	25	15
9.7	168	308		



Depth (m)	H3	K	O	X	Merknad
1.0			5p	205	Meget fast tørrsk.
2.0			0.8	205	— + —
3.0	1750		1.0	204	— + —
4.0	189	4.3	0.8	201	Stiv homogen leire
5.0	313	5.7	5p	195	— + — m/sandk.
6.0	230	4.8	0.8	195	— + —
7.0	189	4.3	0.8	191	Homog. leire m/sandk.
8.0	37	(0.9)	5p	197	Hjæleire. Hedsalt.
9.0	296	(5.5)		203	leire m/mos. stein
9.7				213	Finmp. mjælig



Depth (m)	W	V	F
1.0	217	373	
2.0	231	390	
3.0	205	339	
4.0	320	448	43
5.0	224	383	(27)
6.0	324	475	41
7.0	331	478	41
8.0	335	484	42
9.0	221	374	(23)
10.0	274	425	30
10.5	256	376	

Depth (m)	H1	H3
1.0		
2.0		
3.0		
4.0	46	296
5.0	40	241
6.0	36	267
7.0	34	210
8.0	34	230
9.0	15	359
10.0	17	189
10.5		



Depth (m)	K	O	X	Merknad
1.0	06	209		Meget fast tørrsk.
2.0	06	207		— " —
3.0	06	210		— " —
4.0	55	08	194	Stiv homogen leire
5.0	50	50	209	— " —
5.2			193	— " —
4.6			192	— " —
4.8			192	— " —
16.3			206	Homog. og leire
14.3			199	Homog. leire
			209	Meget m. leirelag