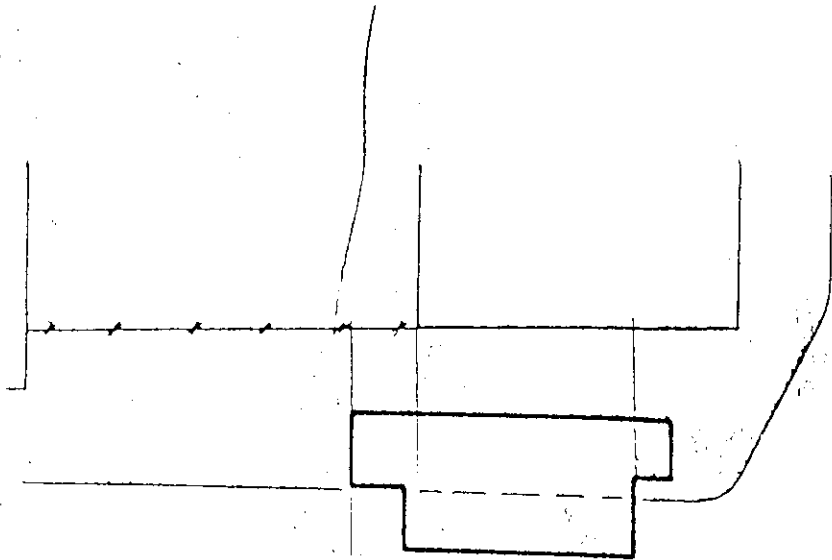


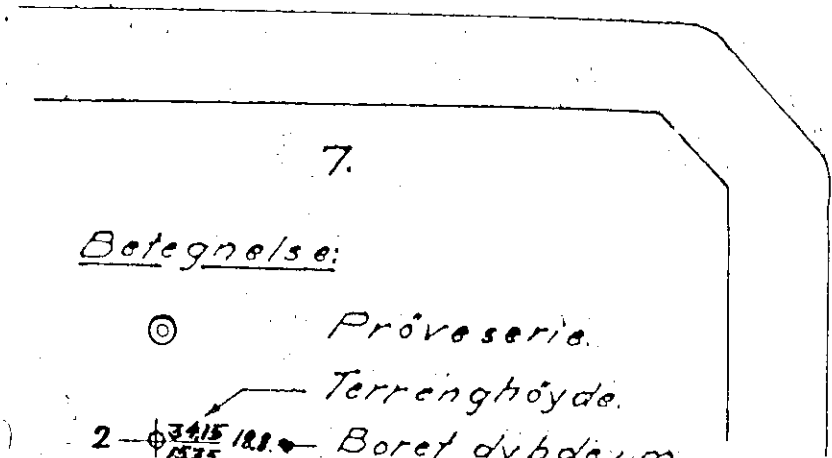
M = 1:250

NOC3



Hesselberg gt.

Topfberg gt.



7.

Betegnelse:



Prøveserie.

Terrénghøyde.

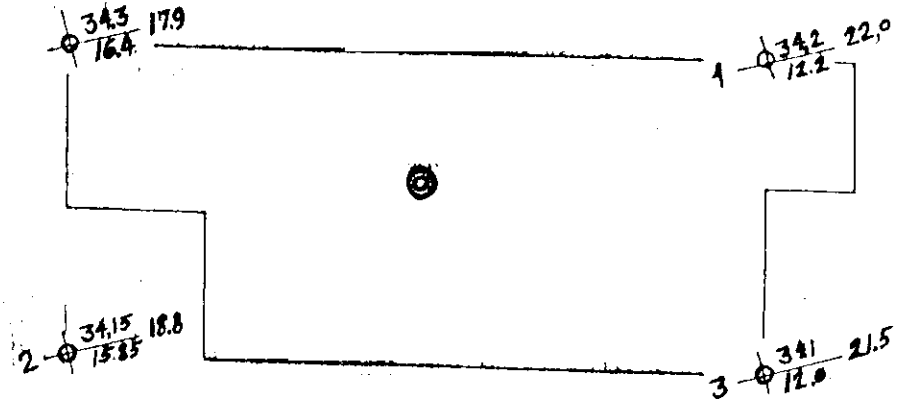
Boret dybde i m.

Fjellkote.

2 - 34.15 18.8 / 15.85

M = 1:100

108 N



1 - 34.3 17.9 / 16.4

1 - 34.2 22.0 / 12.2

2 - 34.15 18.8 / 15.85

3 - 34.1 21.5 / 12.0

Prøveserie

Lab. Nr. 68/ - 79/

Dyp i m	V	M ₂	M ₁	F	O	K	pH	Anm.
1.6	337						7.0	Mosand, Leirh. f.
2.0	338						7.0	" " "
2.5	320						7.0	" " "
3.0	442	14.0	12.4	32		3.4	7.0	Leire, grov
4.0	475	14.9	16.6	35		3.5	7.0	"
5.0	48.0	13.2	17.4	36		3.2	7.5	"
6.0	48.0	13.2	1	36		3.2	7.0	"
7.0	50.0	11.0	12.8	35		2.8	7.5	"
8.0	47.4	13.2	12.8	35		3.2	7.5	"
9.0	49.0	9.0	7.7	33		2.3	7.5	"
10.0	50.0	5.8	8.0	36		1.5	7.5	"

Oslo 8/10 1941

NORSK TEKNISK BYGGEKONTROLL

Tegn. Nr. 815

[Signature]