

NV: B1 II

*

672

Tostrup Terrasse 3

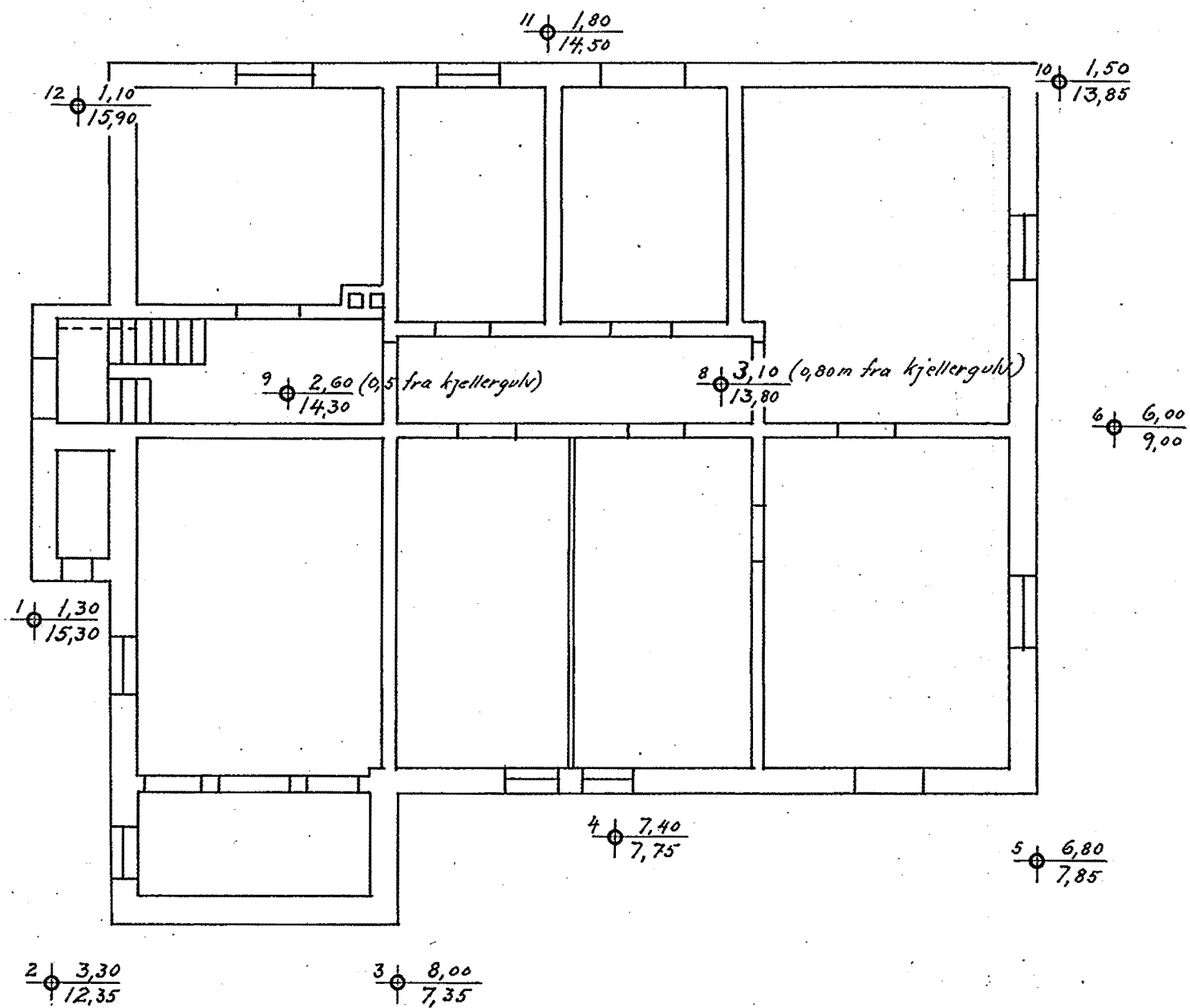
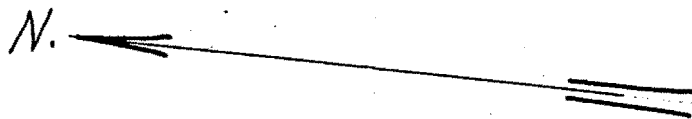
Grunnboringskart for Tostrups Terrasse nr. 3

M. 1:100

110

Bl. 672

Forklaring: $\frac{1,80}{14,50}$ dybde i meter fra terreng til fjell
fjellens kotehoide referert til byens F.M.



Oslo, 17-7-1928

Ingeniör Oscar Large

Large