

*NO: A3 IV

142

Boğ stadun. 31

Bilag 1. til grundboringskart bl. 142

Jordlagenes beskaffenhet	Grundboring nummer :																							
	1	2	3	4	5	6	7	8	9	10	11	12	13	14	15	16	17	18	19	20	21	22	23	24
Fyld i meter	1,0	1,0	1,0	1,0	1,0	1,0	1,0	1,0	1,0	1,0	1,0	1,0	1,0	1,0	1,0	2,0	1,0	1,0	1,0	1,0	1,0	2,0	1,0	1,0
Fast ler	1,0	1,0	1,0	1,5	1,5	1,0	2,0	1,0	1,5	1,0	1,0	1,0	1,0	1,0	1,5	1,0	2,0	2,0	2,0	1,5	1,5	1,0	1,5	1,5
Halvfast ler		1,0	1,0			0,5		0,5	1,5	2,0	0,5	0,5	0,5	0,5			1,0						1,0	
Bløt ler	3,0	3,1	3,1	3,0	3,0	5,8	4,7	4,6	3,9	5,0	4,5	2,5	1,3	2,0	3,5	10,0	8,0	3,7	3,6	1,5	1,0	2,0	8,5	3,5
Grus											0,5													
Bløt ler											0,5													
Gruslag på fjeld										0,4						0,4	0,4						0,4	
Dybde tils.	5,0	6,1	6,1	5,5	5,5	8,3	7,7	7,1	7,9	9,4	8,0	5,0	3,8	4,5	6,0	13,4	12,4	6,7	6,6	4,0	3,5	5,0	12,4	6,0

Antal omdreininger for at bringe boret til at synke 0,5 meter. Benyttet statens veivesens normalbor med spids 4 cm x 4 cm og 120 kg. belastning:

	1.	2.	3.	4.	5.	6.	7.	8.	9.	10.	11.	12.	13.	14.	15.	16.	17.	18.	19.	20.	21.	22.	23.	24.
0			-	-		-		-	-	-	-	-	-	-			-						-	
1			-	-		-		-	-	-	-	-	-	-			-						-	
2			93	103		43		36	39	41	49	39	38	42			40						35	
3			80	96		37		34	34	37	43	30	27	39			31						30	
4			17	53		25		19	28	23	23	18	18	17			29						24	
5			13	0		0		0	20	17	0	0	0	0			19						16	
6			0	0		0		0	16	17	0	0	0	0			10						8	
7			0	0		0		0	9	11	0	0	0	0			6						0	
8			0	0		0		0	0	0	0	0	0	0			0						0	
9			0	0		0		0	0	0	0	0	0	0			0						0	
10			0	0		0		0	0	0	0	0	0	0			0						0	
11			0	0		0		0	0	0	0	0	0	0			0						0	
12			0	0		0		0	0	0	0	0	0	0			0						0	
13			0	0		0		0	0	0	0	0	0	0			0						0	
14			0	0		0		0	0	0	0	0	0	0			0						0	
15			0	0		0		0	0	0	0	0	0	0			0						0	
16			0	0		0		0	0	0	0	0	0	0			0						0	
17			0	0		0		0	0	0	0	0	0	0			0						0	
18			0	0		0		0	0	0	0	0	0	0			0						0	
19			0	0		0		0	0	0	0	0	0	0			0						0	
20			0	0		0		0	0	0	0	0	0	0			0						0	
21			0	0		0		0	0	0	0	0	0	0			0						0	
22			0	0		0		0	0	0	0	0	0	0			0						0	
23			0	0		0		0	0	0	0	0	0	0			0						0	
24			0	0		0		0	0	0	0	0	0	0			0						0	

Dybde i meter

Oslo

GRUNDBORINGSKART FOR N^o 31 BOGSTADVEIEN

BL. 142

Med 1 bilag

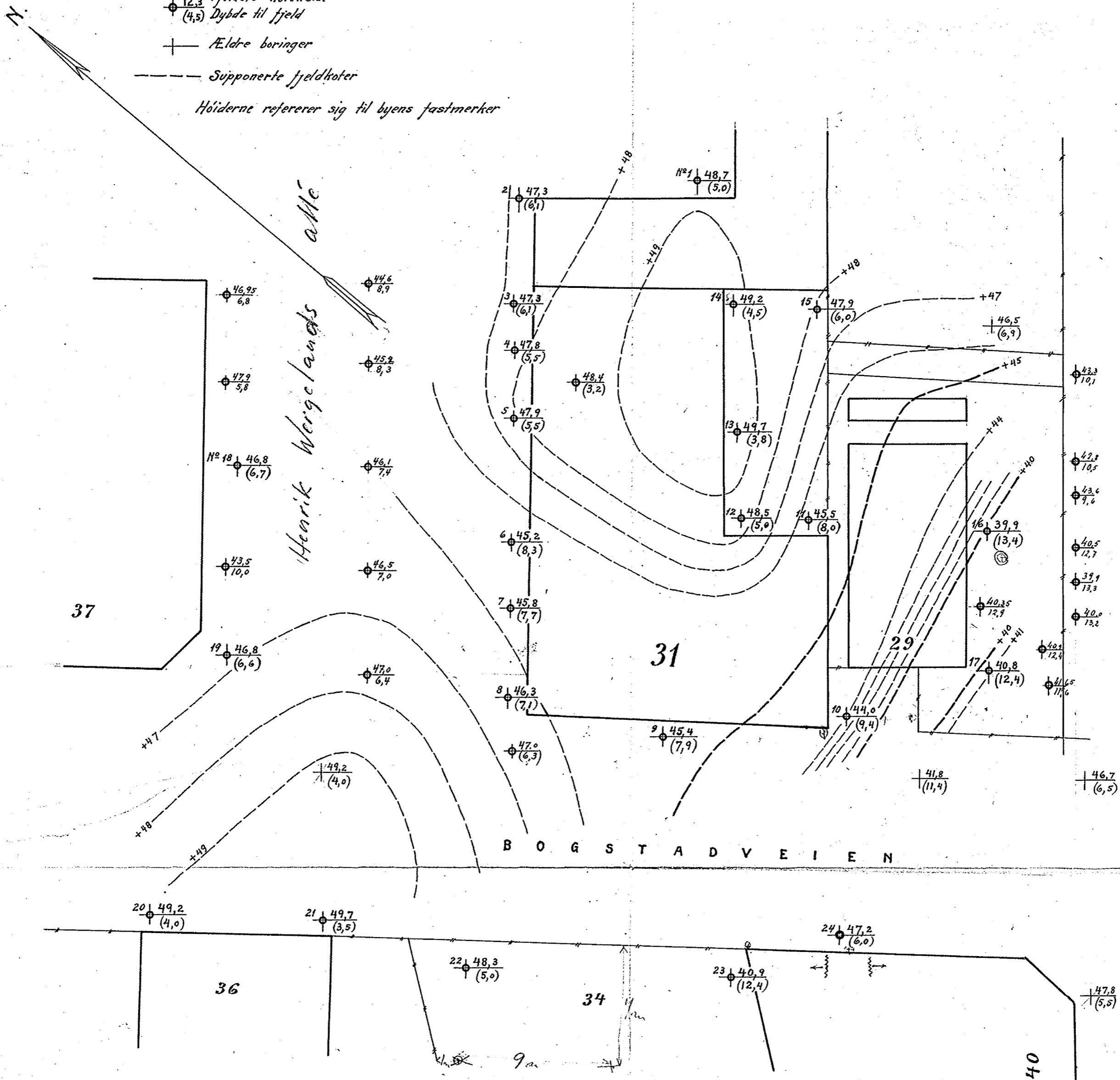
M. 1:200

Belegner: $\frac{12.3}{(4.5)}$ Fjeldets kotehøide
Dybde til fjeld

— Eldre boringer

--- Supponerte fjeldkoter

Høiderne refererer sig til byens fastmerker



J N D U S T R I G A T E N

Kristiania mai 1922
Oscar Karp