

* NO: B3 II

343

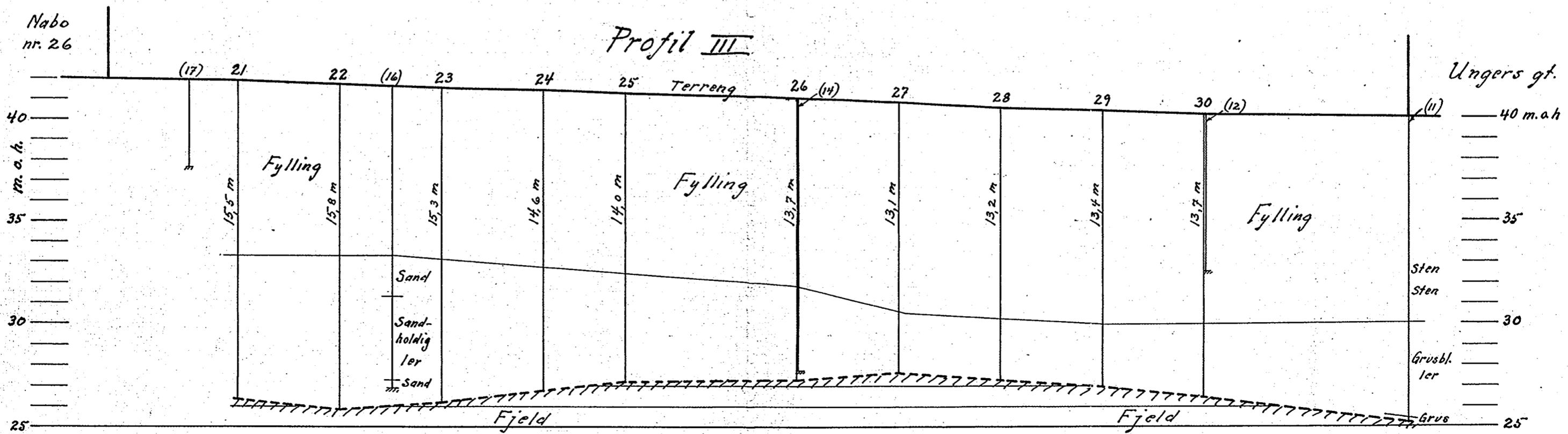
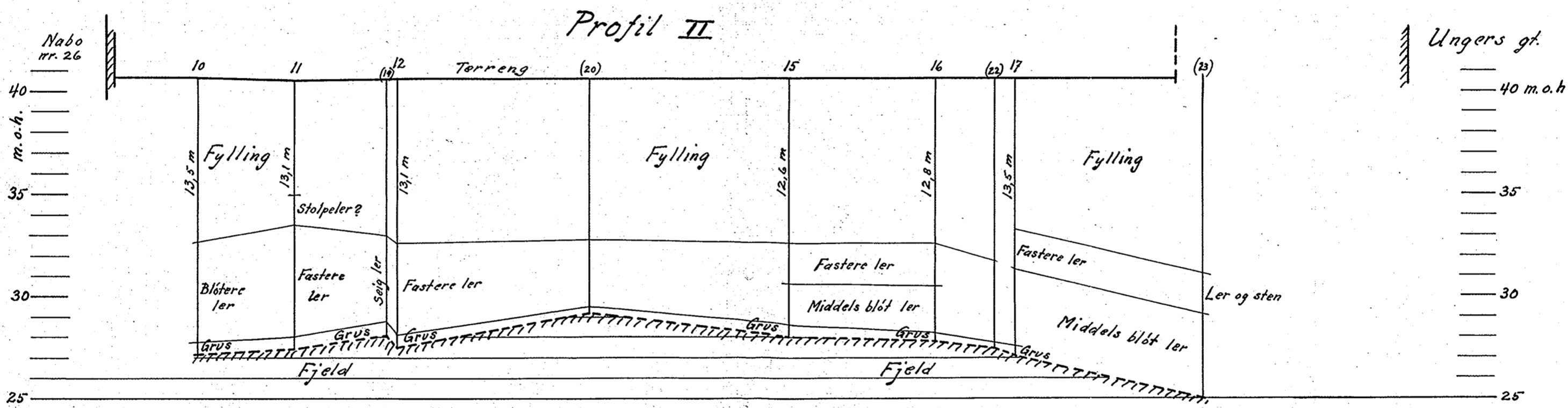
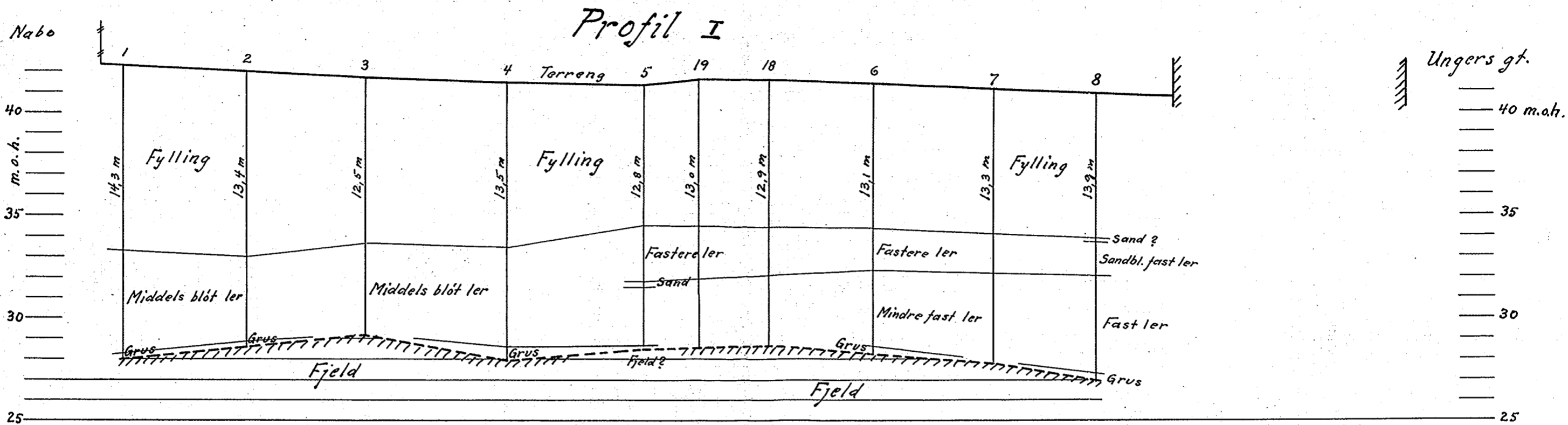
Bjerregaards gt. 28.30

Nr. 13 c Akersbakken

Grundprofiler M. 1:200

Bilag nr. 1
til grundboringskart bl. 343

Borskud med nummer i parentes er utført i 1923



Oslo 2-2-1925

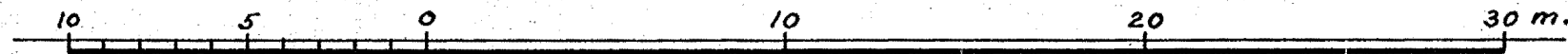
Oscar Lange

Grundboringskart over nr. 13^c Akersbakken

Bl. 343

M. 1:200

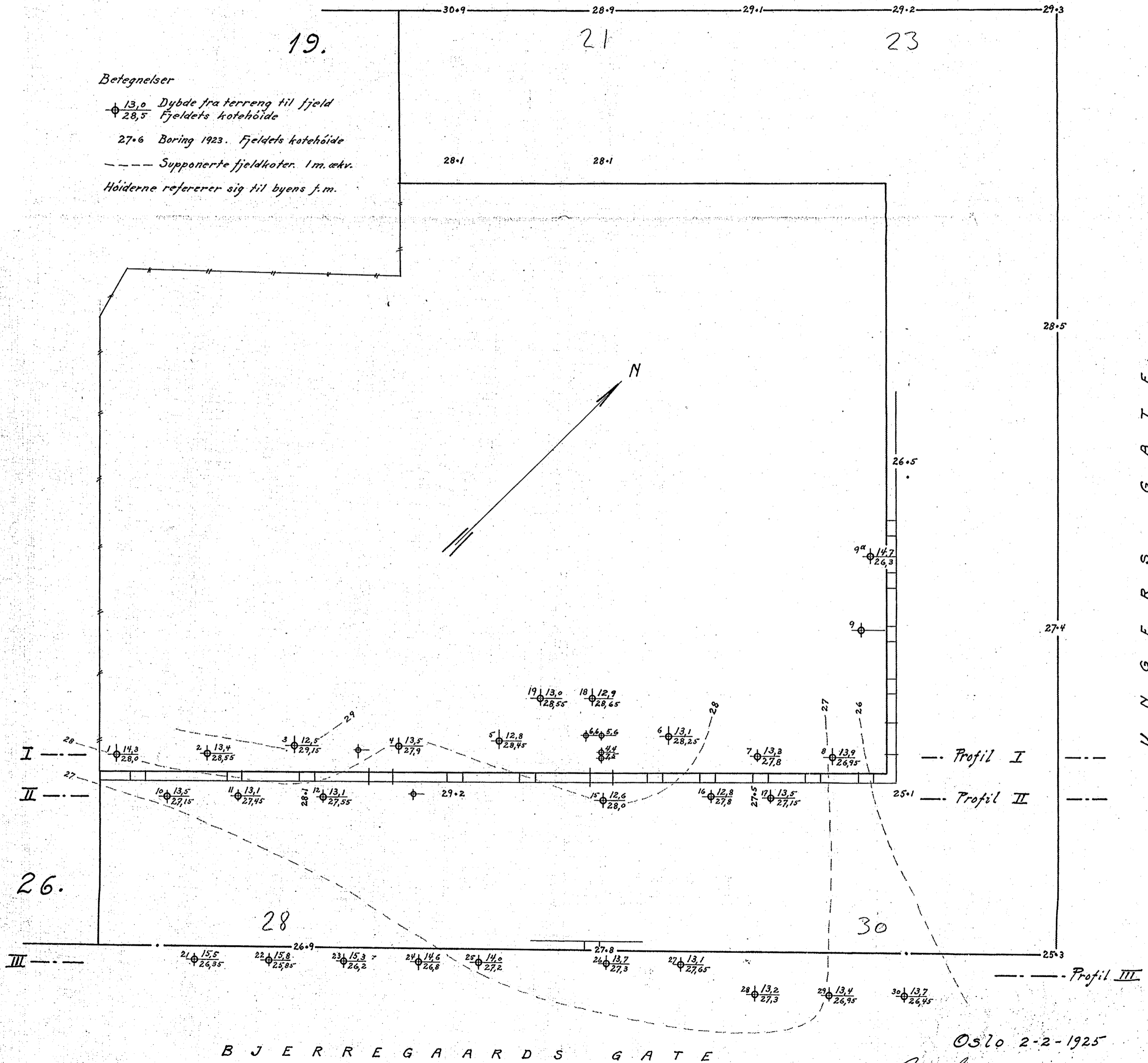
Se ogsaa Bl. 238.



W M T H R A N E S G A T E

Betegnelser

- ⊕ 13,0 Dybde fra terræng til fjeld
 - ⊕ 28,5 Fjeldets kotehøide
 - 27,6 Boring 1923. Fjeldets kotehøide
 - Supponerte fjeldkoter. 1 m. ækv.
- Høiderne refererer sig til byens f.m.



Oslo 2-2-1925

Oscar Larsen

U N G E R S G A T E

B J E R R E G A A R D S G A T E