

\* NV: A2<sup>II</sup>

670

Gyldenlövesgt. 18

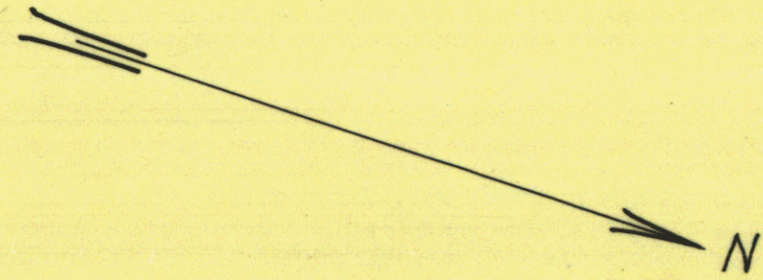


# Grunnboringskart over Gyldenløves gate nr. 18

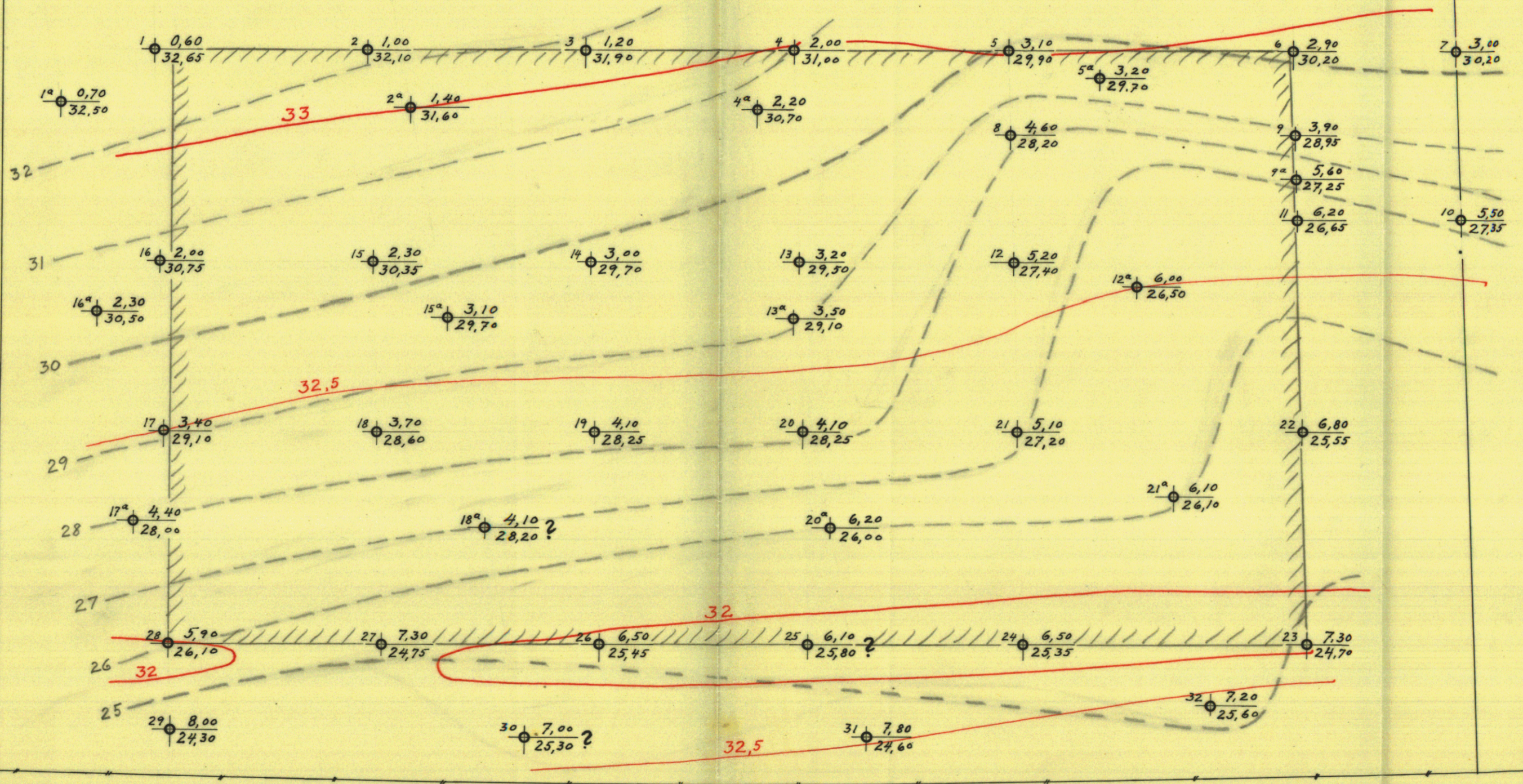
## M. 1:100

Bl. 670

Forklaring:  $\bullet$   $\frac{1,20}{31,90}$  dybde i meter fra terrang til fjell  
 $\bullet$   $\frac{31,90}{31,90}$  fjellets kotehøide referert til byens F.M.  
 ——— terrengkoter 0,5 m avvidistance  
 - - - - - approximative fjellkoter 1 m. cøkv.



ofdv



Oslo, juli 1928  
 P. P.

G Y L D E N L Ö V E S G A T E

P.P.