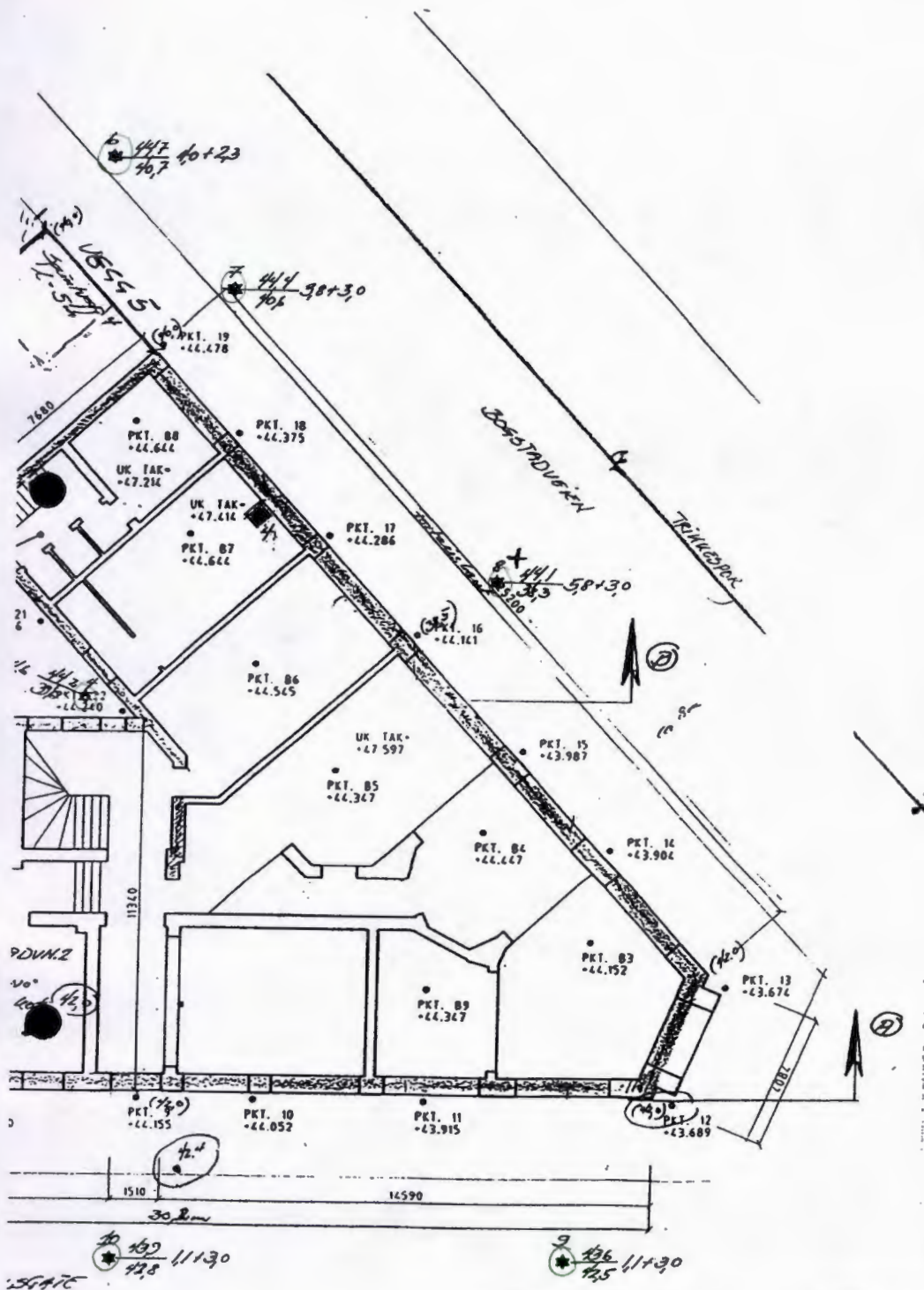


#NO43 NVK Terraplan 95064



Oppdragsgiver:	PEAB A/S	
Anlegg:	PROF. DAHLSGT.1/BOGSTADVN.2	
Sted:	OSLO	
SITUAJONSPLAN	Beregn.	Jan. 96
	Målestokk	1:200 A
NVK TERRAPLAN A.S		Tegn.nr. 95064-01

5.137
3.345

435 58+20
37,7

PKT. P2
+45.752

PKT. P1
+44.772

PKT. P3
+45.826

13160

436 76+20
36,0

437 67+20
37,0

436 48+20
38,8

Keel-fu
ut 436

437 29+20
40,8

PROF. DAALSET
Tindur
máttuleikur

437

437 34+20
40,3

438 27
40,8

(39,5) PKT. 1
+44.984

PKT. 2
+44.914

PKT. 3
+44.742

PKT. 4
+44.642

PKT. 5
+44.540

37,6

11570

2102

11780

439 53+30
39,6

445 24+29
42,1

snjeyndra

Ke

42.3

42.2

214/152

BARBERNINE

DORSTADT W. 4

30g + 400g

Spantweg 3
L = 21m

Handwritten notes and symbols on the right side of the top section.

214/288

GARDSPLASS

44.7

Defiantes
Holl am
Spantweg 1, 2
L = 21m

GARDSPLASS

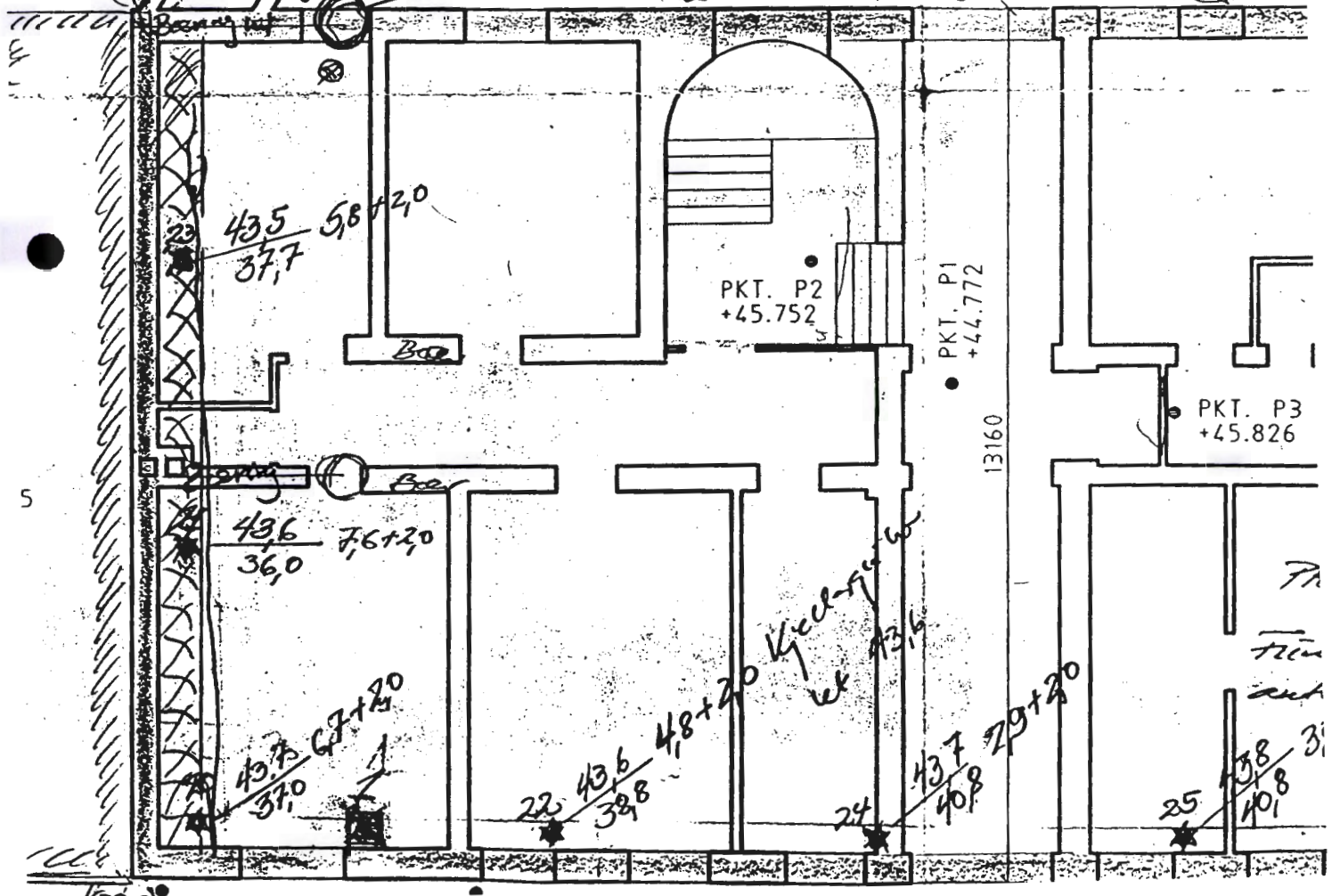
kt 446

7 44.7 / 42.9 1.8+3.0

PKT. P5
+44.722 38.3+

PKT. 4
+44.525

13.1.2 44.5 5.9+3.0
38.6 G3



43.5 58+20
37.7

PKT. P2
+45.752

PKT. P1
+44.772

PKT. P3
+45.826

43.6 7.6+2.0
36.0

13160

43.7 6.7+2.0
37.0

22 43.6 4.8+2.0
38.8

Kiech-f...
kt 43.6

24 43.7 7.9+2.0
40.8

25 38 3.1
40.8

5

$$\text{Pkt } 20 - \frac{43}{35} \frac{67}{97} \quad 67 + 20 \quad \checkmark$$

$$\text{Pkt } 21 - \frac{43}{35} \frac{59}{99} \quad 76 + 20$$

$$\text{Pkt } 22 - \frac{43}{38} \frac{58}{78} \quad 48 + 20 \quad \checkmark$$

$$\text{Pkt } 23 - \frac{43}{37} \frac{45}{65} \quad 58 + 20$$

$$\text{Pkt } 24 - \frac{43}{40} \frac{68}{78} \quad 29 + 20$$

$$\text{Pkt } 25 - \frac{43}{40} \frac{76}{76} \quad 30 + 20$$

$$\text{Pkt } 26 - \frac{43}{40} \frac{68}{28} \quad 34 + 20$$

~~Σ~~

$$\frac{392}{190}$$