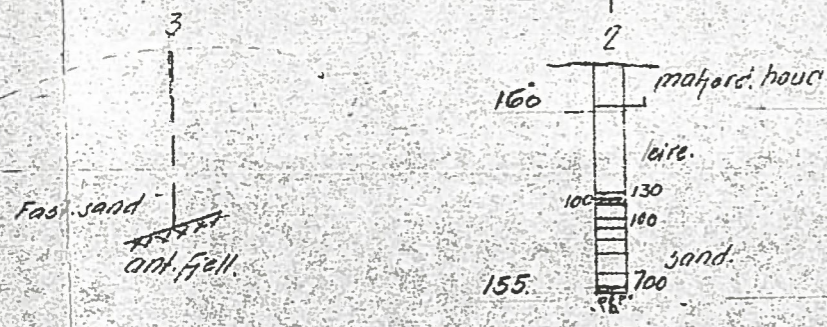


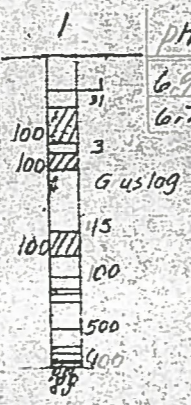
OVER HULL
4. M 1:200

BLOKK 4.



401N
Prøveserie IV h = 159.55

Dyp	W	V	F	H1	H3	K	O	I	pH	γ	Merknad
1.0	23.4	39.3			17.50			1	6.7	2.07	knal ost farr korrelerte
2.0	35.9	49.3	38	17	23	0.6		3	6.7	1.8	slapp leire, "100% matjordrester"



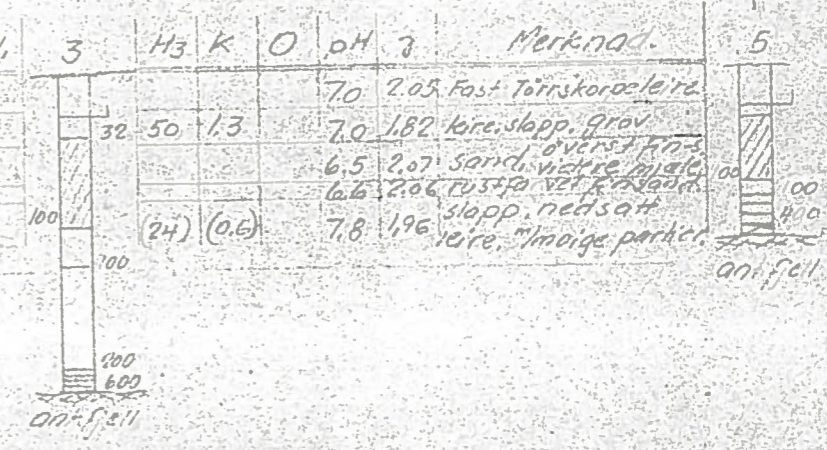
PROFIL E-E
M 1:200



PROFIL F-F
M 1:200

402N
Prøveserie IV h = 159.85

Dyp	W	V	F	H1	H3	K	O	pH	γ	Merknad
1.0	25.1	41.1						7.0	2.05	Fast Torrskorpelire
2.0	41.7	53.5	38	6				7.0	1.82	leire, slapp, grav
3.0	21.1	36.1						6.5	2.07	sand, overste knal
3.25	22.1	37.1						6.6	2.06	rustfritt metall
4.50	18.7	43.7	(28)					7.8	1.96	slapp, nedsett leire, "mørke partikkel"



PROFIL G-G
M 1:200



NOL7

401N

Pröveseriē v. h. 159,55.

Dip	W	V	F	M	H3	K	O	I	PH	γ	Merknad
1.0	234	39.3	57	17	1750			100	6.9	2.07	knallfast lorrskorpelerre.
2.0	35.9	49.5	38	17	(2.3)	(0.6)		100	6.7	1.87	slapp leire, "Inoematidrester.
								100			Gruslag.
								100			45
								100			100
								500			
								1000			

NOTEBY 2092
1951