

Arbeid nr. 114/54
BRÆKKE BRUK

Sonderbor.
Belastn. Antall
i ½
kg omdreining

Opptatte prover.
Dybde i m.
15 cm fra
Sjøbunn
Jordart.
Sjøbunn kote 145,9

Naturlig vanninnhold = W
Konsistensgrenser
W_L = flytegrense
W_p = utrullingsgrense
i %
10 20 30 40 50 60 70 80 90

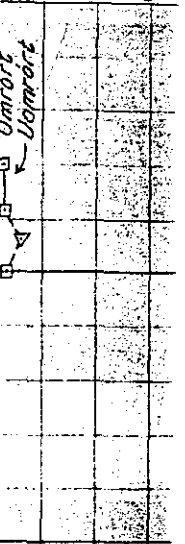
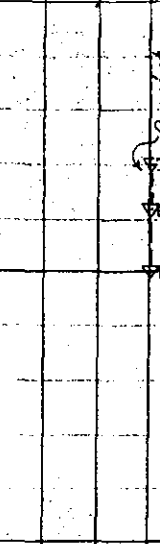
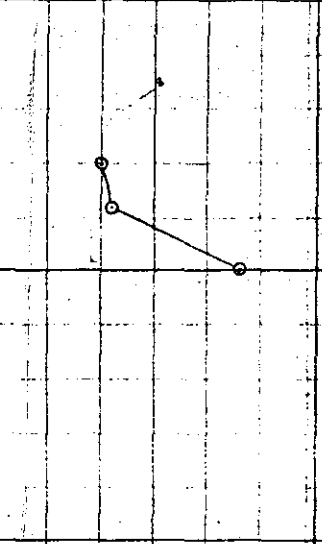
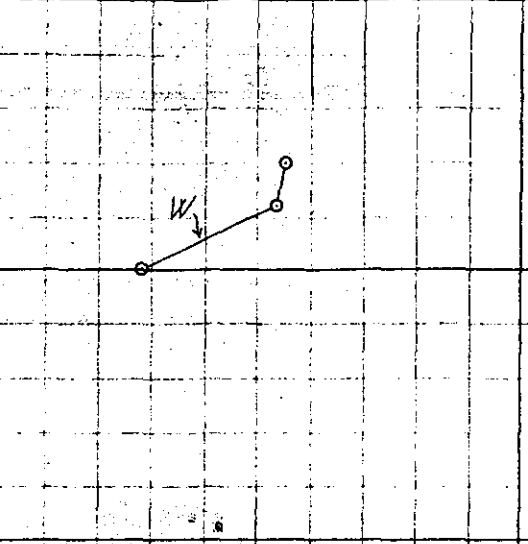
Rørmvekt
t/m³
408H
409H
1,6 1,7 1,8 1,9 2,0

pH
Relative finhetstall
Humus i %

Skjærta
Bestemt i
1 2 3

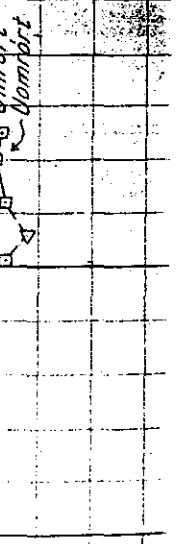
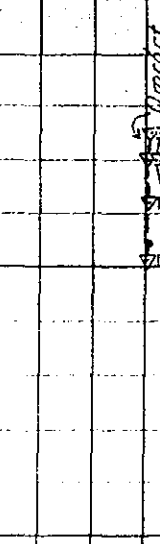
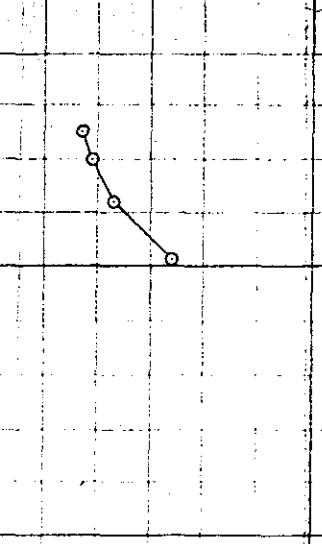
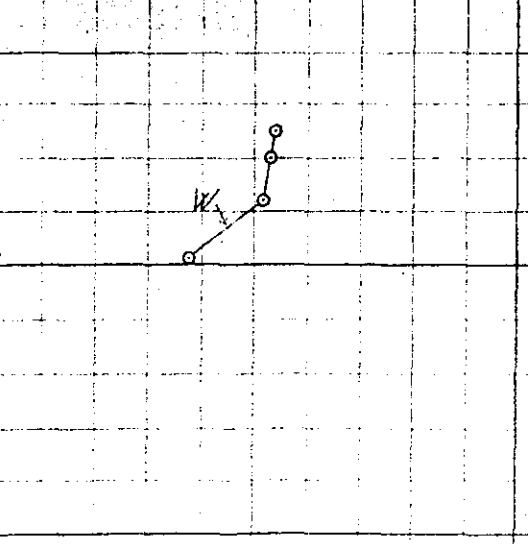
408H
Pr. III

1
2 Leire, oksydert, løs.
3 " " " " " " " "
4 " " " " " " " "
5 Mo. og mjela m/leirsjikt. Enk. sandkorn. Løs.
6 Mo, vannmettet.
Sjøbunn kote 146,1



409H
Pr. IV
Haukelid 114/54
NO E11^{IV}

1
2 Leire. Litt planterester. Oksydert. Løs.
3 " " " " " " " "
4 " " " " " " " "
5 Leirig mo og mjela. Løs.
6 Sand og grus.
Sjøbunn kote 146,2



Pr. V
HAUKELID
1955
Bl. 2

1
2 Leire. Litt planterester. Oksydert. (Spåleire)
3 " " " " " " " "
4 Mo. og mjela. Omrørt Lag

