

Arbeid nr. 114/54
BRÆKKE BRUK

Sonderbor.
Belastn. Antall
i 1/2
kg omdreining

Opptatte prøver.
Jordart.
Sjøbunn kote 145,9

Naturlig vanninnhold-W
Konsistensgrenser:
W_L = flytegrense
W_p = utrullingsgrense
10 20 30 40 50 60 70 80 90

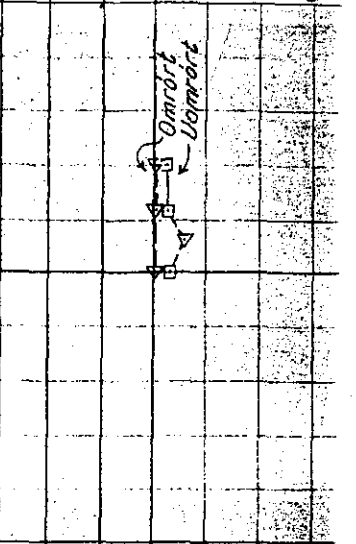
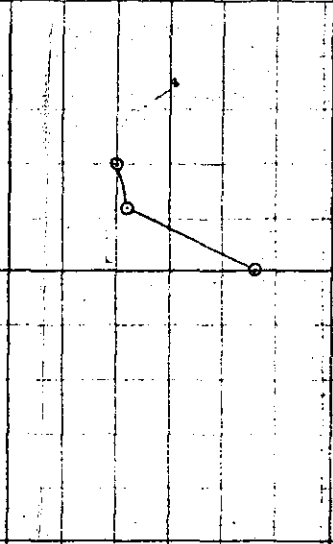
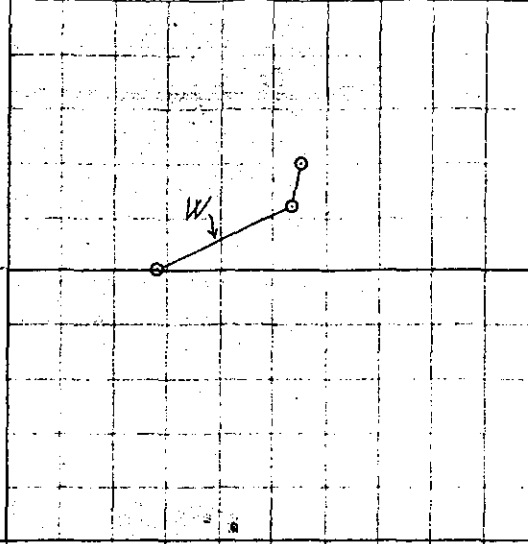
Romvekt
t/m³
408H
409H
1,6 1,7 1,8 1,9 2,0

pH
Relative finkvikler
Humus i %

Skjærfa
Bestemt i
1 2 3

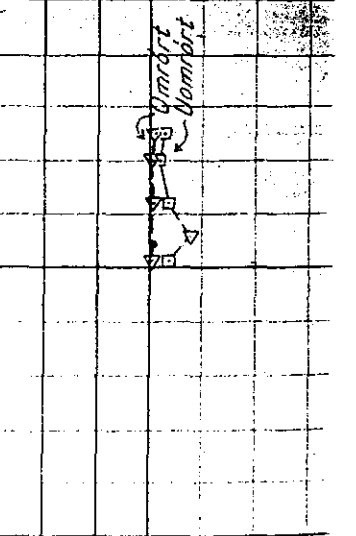
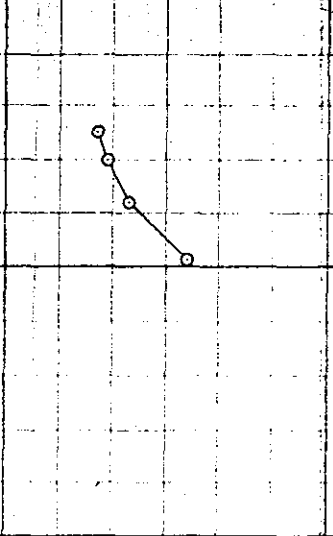
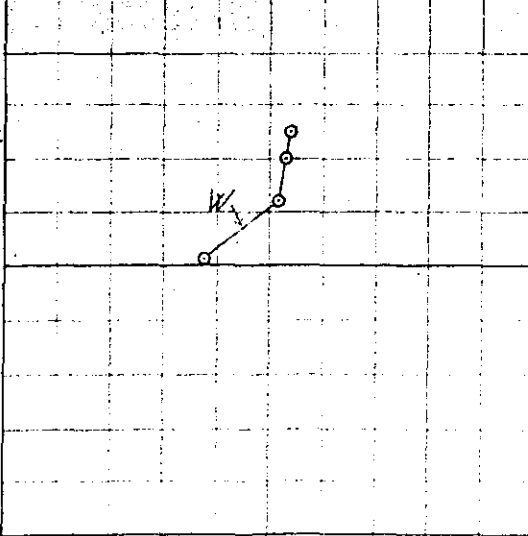
408H
Pr. III

1-6
Leire, oksydert, løs.
" " " " " "
" " " " " "
Mo og mjelle m/leirsjikt. Enkl. sandkorn. Løs.
Mo, vannmettet.
Sjøbunn kote 146,1



409H
Pr. IV
Haukelid 114/54
NO E11^{IV}

1-6
Leire. Litt planterester. Oksydert. Løs.
" " " " " "
" " " " " "
Leirig mo og mjelle. Løs.
Sand og grus.
Sjøbunn kote 146,2



Pr. V
HAUKELID
1955
Bl. 2

1-6
Leire. Litt planterester. Oksydert. (Båleire)
" " " " " "
" " " " " "
Mo og mjelle. Omrørt lag.

