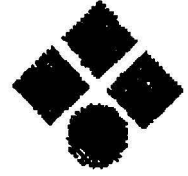


* NVA5, NOAG, NVA5

Norconsult



BLINDERNTUNNELLEN

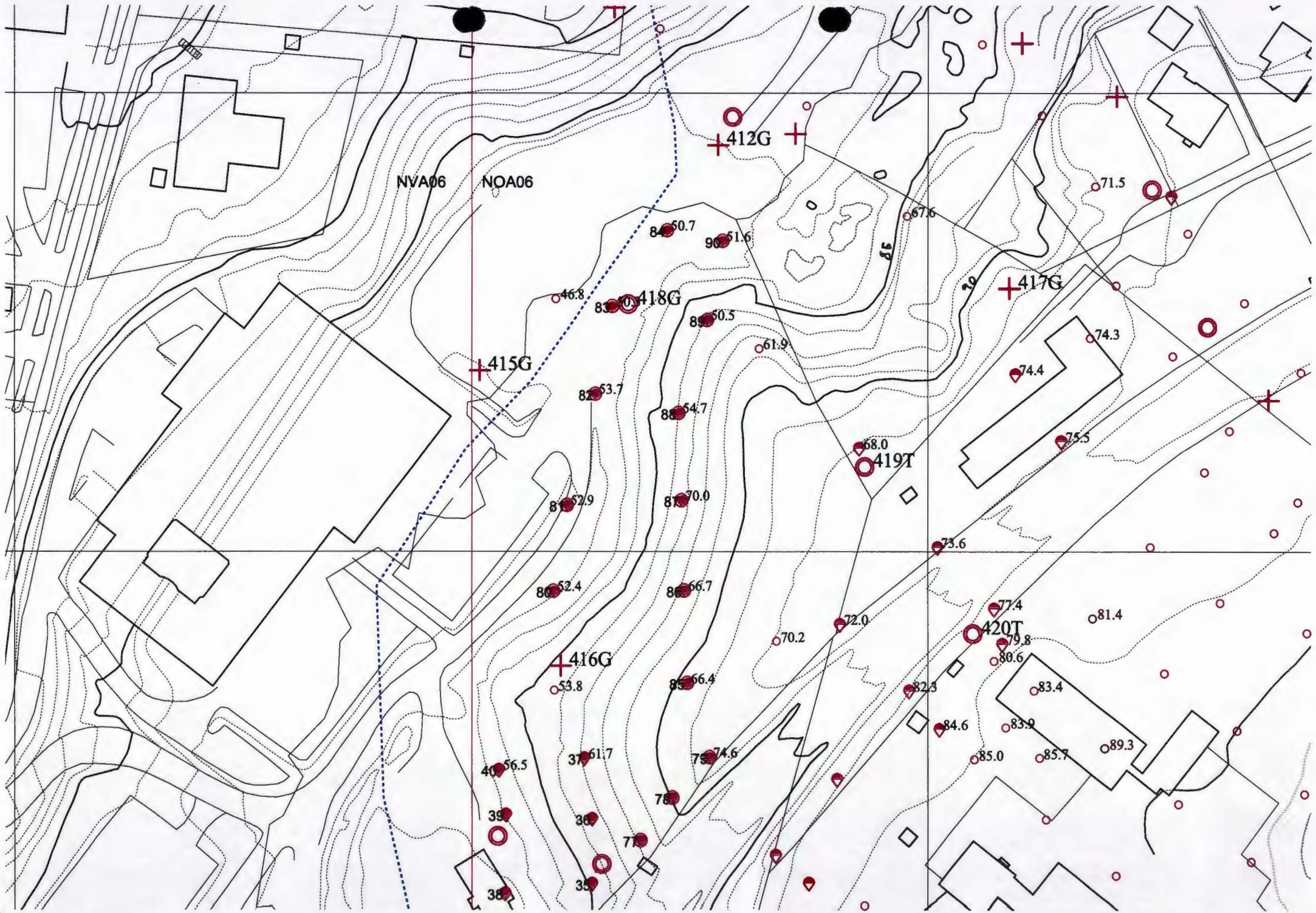
Grunundersøkelser 1998

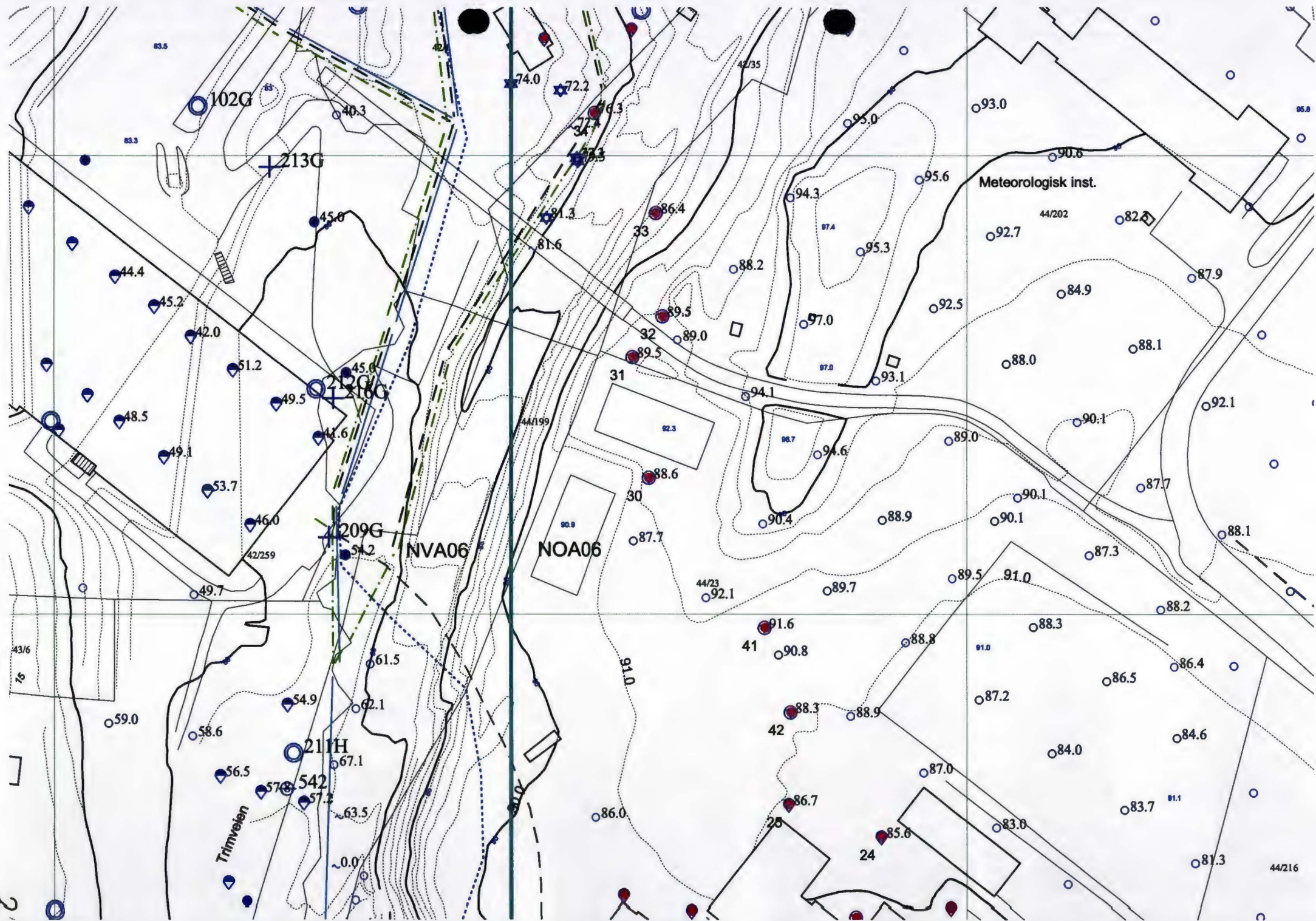


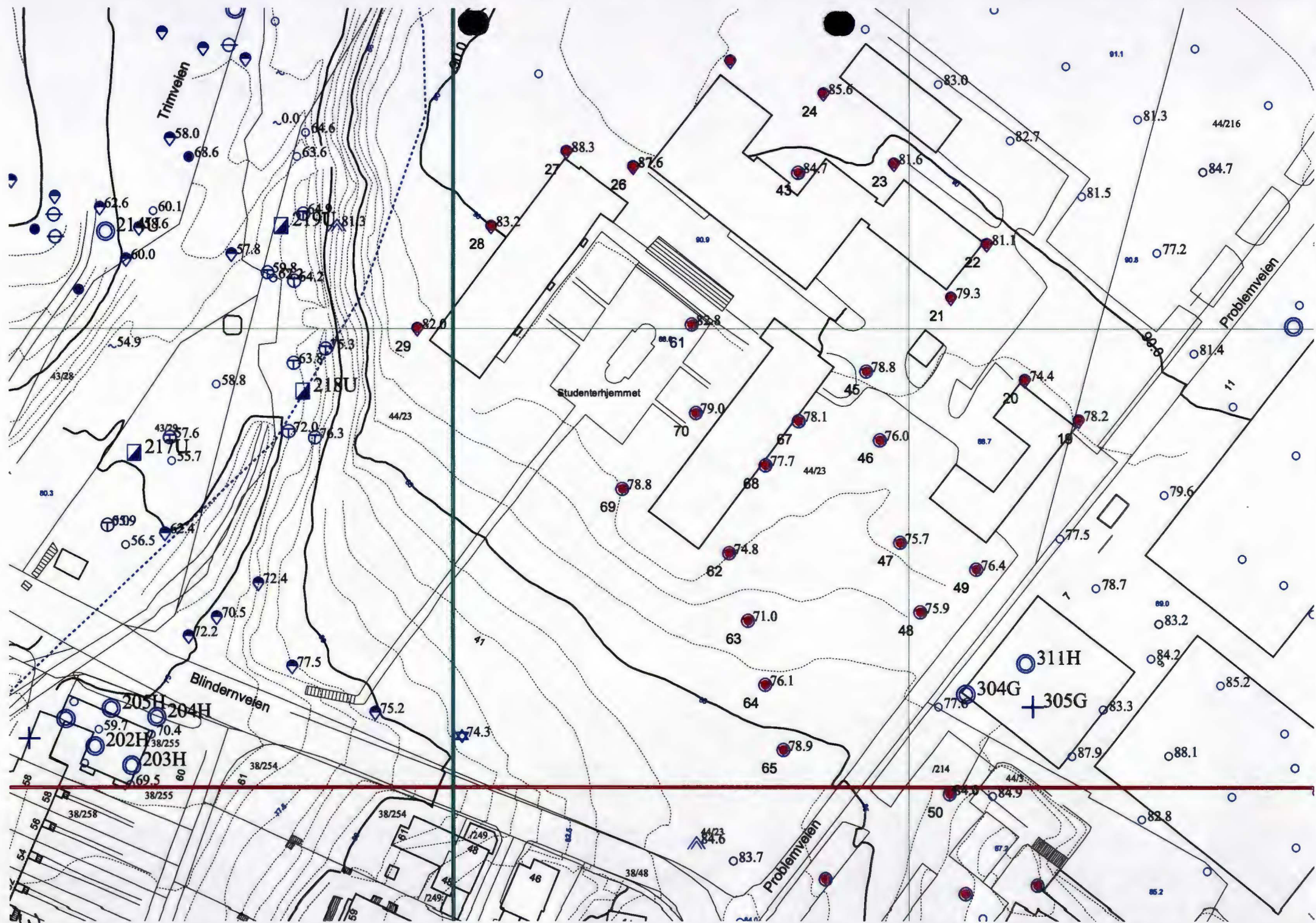
Blinderntunnellen
Grunnundersøkelser 1998

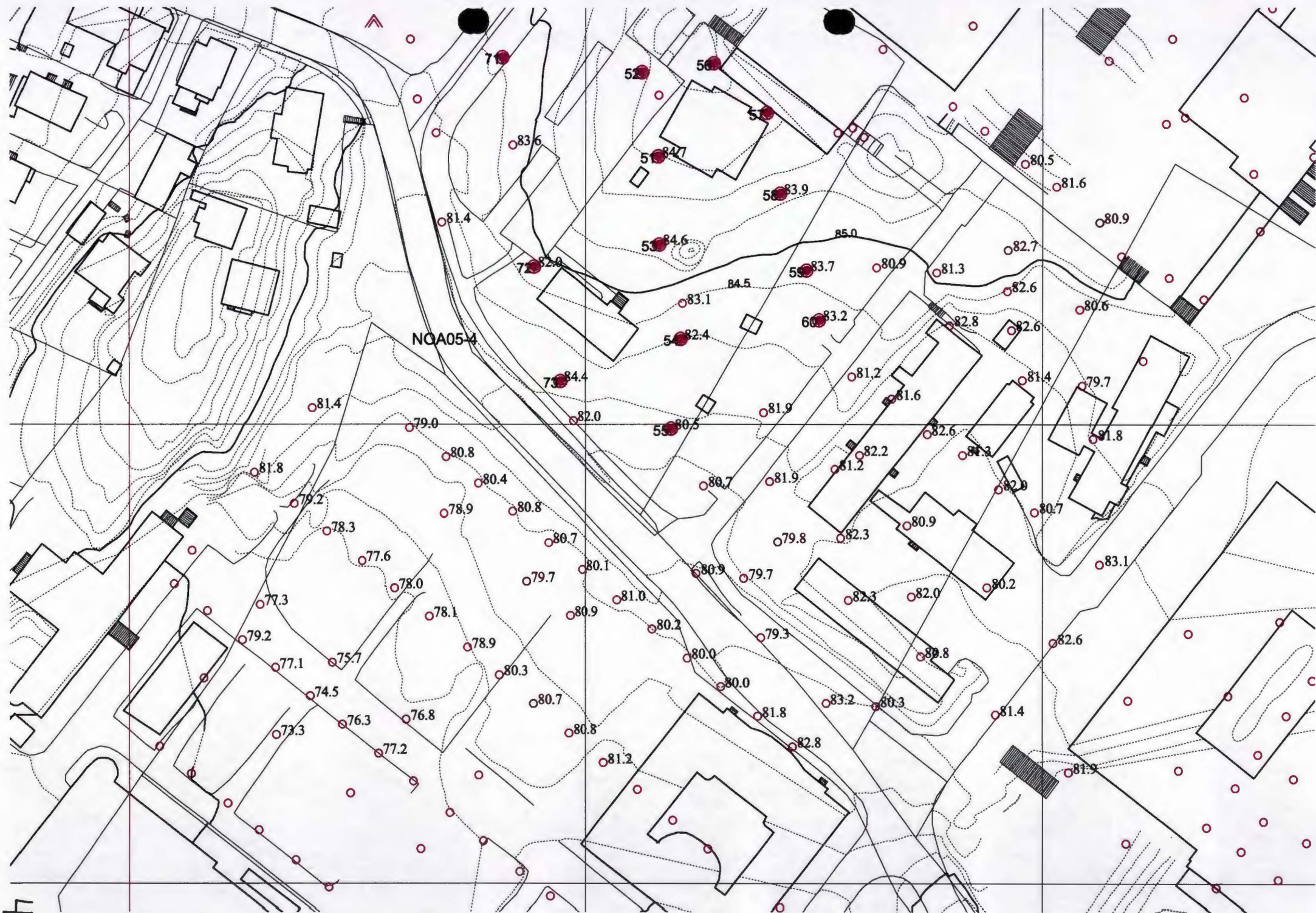
Borpunkt	Type boring	x	y	z	Boret i løsmasser	Boret i fjell	Kote fjell
6	T	2765.405	189.423	76,31	2,6	2	73,71
7	T,PZ	2755.259	195.137	75,46	13,0	2	62,46
8	T	2748.584	202.812	75,42	12,0	2	63,42
9	T	2737.793	210.541	75,06	7,6	2	67,46
10	T	2755.435	179.161	75,90	2,2	2	73,70
11	T	2749.607	187.849	75,51	13,7	1,5	61,81
12	T	2744.424	195.604	75,23	13,7	1,5	61,53
13	T	2734.675	204.205	74,79	8,5	1,5	66,29
14	T	2754.971	157.757	77,91	3,0	2	74,91
15	T	2740.749	165.299	76,62	5,3	1,7	71,32
16	T	2730.582	175.865	75,52	10,7	1,7	64,82
17	T	2717.878	188.315	74,40	9,0	2	65,40
18	T	2712.282	192.657	74,33	6,6	2,5	67,73
19	DT	3080.071	137.165	88,86	10,7		78,16
20	DT	3088.827	125.368	88,88	14,5		74,38
21	DT	3106.842	109.278	89,19	9,9		79,29
22	DT	3118.499	117.052	89,44	8,3		81,14
23	DT	3136.073	96.644	89,69	8,1		81,59
24	DT	3151.357	81.274	90,12	4,5		85,62
25	DT	3158.46	60.908	90,39	3,7		86,69
26	DT	3135.435	39.765	90,83	3,2		87,63
27	DT	3138.728	24.954	90,75	2,5		88,25
28	DT	3122.432	8.419	90,05	6,9		83,15
29	DT	3100.103	-7.819	88,70	6,7		82,00
30	T	3229.712	30.37	92,26	3,7	1,8	88,56
31	T	3256.084	26.802	92,64	3,1	2,3	89,54
32	T	3264.989	33.355	92,45	3,0	2,4	89,45
33	T	3287.493	31.872	87,96	1,6	2	86,36
34	T	3309.333	18.443	83,67	7,4	1,4	76,27
35	DT	3327.667	26.615	85,15	12,8		72,35
36	DT	3341.867	26.615	86,67	17,6		69,07
37	DT	3355.052	24.892	87,17	25,5		61,67
38	DT	3325.562	7.346	81,94	14,4		67,54
39	DT,Pr	3342.808	7.518	83,19	25,1		58,09
40	DT	3352.452	5.981	83,47	27,0		56,47
41	T	3197.012	55.612	91,98	0,4	2,6	91,58
42	T	3178.604	61.316	91,72	3,4	2	88,32
43	T	3134.117	75.704	90,02	5,3	2	84,72
45	T	3093.731	90.689	89,22	10,4	2,1	78,82
46	T	3075.768	93.635	88,35	12,4	1,9	75,95
47	T	3053.364	98.015	88,37	12,7	2	75,67
48	T	3038.174	102.518	87,01	11,1	1,7	75,91
49	T	3047.49	114.691	88,61	12,2	0,5	76,41
50	T	2998.576	108.932	85,67	1,7	1,8	83,97
51	T	2958.42	115.94	86,31	1,6	1,2	84,71
52	T	2976.777	112.48	86,45	1,6	2	84,85

Borpunkt	Type boring	x	y	z	Boret i løsmasser	Boret i fjell	Kote fjell
53	T	2939.23	116.214	85,92	1,3	1,5	84,62
54	T	2918.591	120.914	84,01	1,6	2	82,41
55	T	2899.017	118.768	83,48	3,0	2	80,48
56	T	2978.71	128.094	87,02	1,9	1,8	85,12
57	T	2967.87	139.563	86,45	2,2	1,4	84,25
58	T	2950.277	142.522	85,68	1,8	2	83,88
59	T	2933.548	148.331	84,77	1,1	2,4	83,67
60	T	2922.685	151.131	84,34	1,1	2,4	83,24
61	T	3100.969	52.502	88,77	6,0	2	82,77
62	T,Pr,PZ	3051.055	60.667	88,10	13,3	1,3	74,80
63	T	3036.635	64.758	86,37	15,4	1	70,97
64	T	3022.338	68.523	85,71	9,6	1,2	76,11
65	T	3008.123	72.489	84,86	6,0	2	78,86
67	T	3079.89	75.882	88,71	10,6	2	78,11
68	T	3070.252	68.596	88,72	11,0	1,7	77,72
69	T	3065.127	37.432	87,80	9,0	1,6	78,80
70	T	3081.684	53.375	88,53	9,5	1,3	79,03
71	T	2980.06	81.685	84,69	6,3	1,2	78,39
72	T	2934.382	88.614	84,83	2,8	2,5	82,03
73	T	2909.422	94.439	83,54	1,1	2,4	82,44
77	T	3337.100	37.169	88,08	15,3	0	72,78
78	T	3346.413	44.100	90,07	16,1	0	73,97
79	T	3355.260	52.197	91,40	16,8	0	74,60
80	T	3391.510	17.944	81,81	29,4	0	52,41
81	T	3410.208	20.859	81,86	29,0	0	52,86
82	T	3434.438	27.292	82,10	28,4	0	53,70
83	T	3453.518	31.052	82,33	32,0	0	50,33
84	T	3470.098	42.857	82,63	31,9	0	50,73
85	T	3371.398	47.296	90,26	23,9	0	66,36
86	T	3391.577	46.627	88,18	21,5	0	66,68
87	T	3411.238	46.063	86,62	16,6	0	70,02
88	T	3430.267	45.456	85,96	31,2	0	54,76
89	T	3450.521	51.691	85,94	35,4	0	50,54
90	T	3467.739	55.081	82,62	31,0	0	51,62
91	PZ	3369.431	102.720	93,45			93,45
94	T	2583.393	366.540	68,66	12,3	0	56,36
95	T	2570.540	374.154	68,84	8,3	0	60,54
96	T	2557.119	382.296	69,68	8,1	0	61,58
97	T	2544.519	396.121	70,62	6,4	0	64,22
98	T	2563.833	339.710	66,98	8,6	0	58,38
99	T	2552.813	356.530	66,02	2,6	0	63,42
100	T	2548.766	373.513	69,72	10,0	0	59,72
101	T	2537.921	386.388	70,46	6,2	0	64,26













403K

405K
406K

NOA05-4

NOA05-3

14

15

16

17

18

6

7

8

9

10

11

12

13

14

15

16

17

18

80.0

80.2

81.9

78.9

79.6

78.8

78.1

74.2

74.9

76.9

76.5

74.8

71.3

74.9

69.5

75.0

68.2

69.2

69.4

69.9

76.5

77.2

75.8

74.2

74.2

74.8

66.8

78.6

64.8

65.5

65.0

65.2

68.9

69.8

71.0

68.9

68.4

69.7

74.2

73.7

73.7

71.1

61.8

65.7

64.2

66.8

65.4

67.1

67.7

65.4

68.9

69.8

71.0

68.9

68.4

69.7

74.2

73.7

70.1

66.9

71.4

61.5

68.0

64.2

69.2

67.8

72.4

71.4

71.7

71.9

71.6

71.3

73.2

71.9

73.7

61.1

62.5

63.4

61.5

68.0

66.2

66.3

69.2

67.8

72.4

71.4

71.7

71.9

71.6

71.3

73.2

71.9

70.1

62.5

63.4

61.5

68.0

66.2

66.3

69.2

67.8

72.4

71.4

71.7

71.9

71.6

71.3

73.2

71.9

63.4

69.0

67.5

68.2

72.7

67.5

66.3

68.2

69.2

67.8

72.4

71.4

71.7

71.9

71.6

71.3

73.2

71.9

68.6

61.9

64.2

73.0

64.2

68.0

67.5

68.2

69.2

67.8

72.4

71.4

71.7

71.9

71.6

71.3

73.2

71.9

61.9

64.2

73.0

64.2

68.0

67.5

68.2

69.2

67.8

72.4

71.4

71.7

71.9

71.6

71.3

73.2

71.9

69.2

64.3

73.0

64.2

68.0

67.5

68.2

69.2

67.8

72.4

71.4

71.7

71.9

71.6

71.3

73.2

71.9

64.3

65.3

65.8

66.2

70.7

76.0

69.6

74.2

72.4

75.9

71.5

71.4

67.6

73.5

NOA05-4

NOA05-3

2.6

70.4

68.2

69.2

69.4

68.4

69.3

73.2

71.9

