

*NO: C5I

193

~~Hammer~~

Bentsegt. 15⁻ - 17

Grundboringskart for nr. 9.11 & 15 Bentsegaten

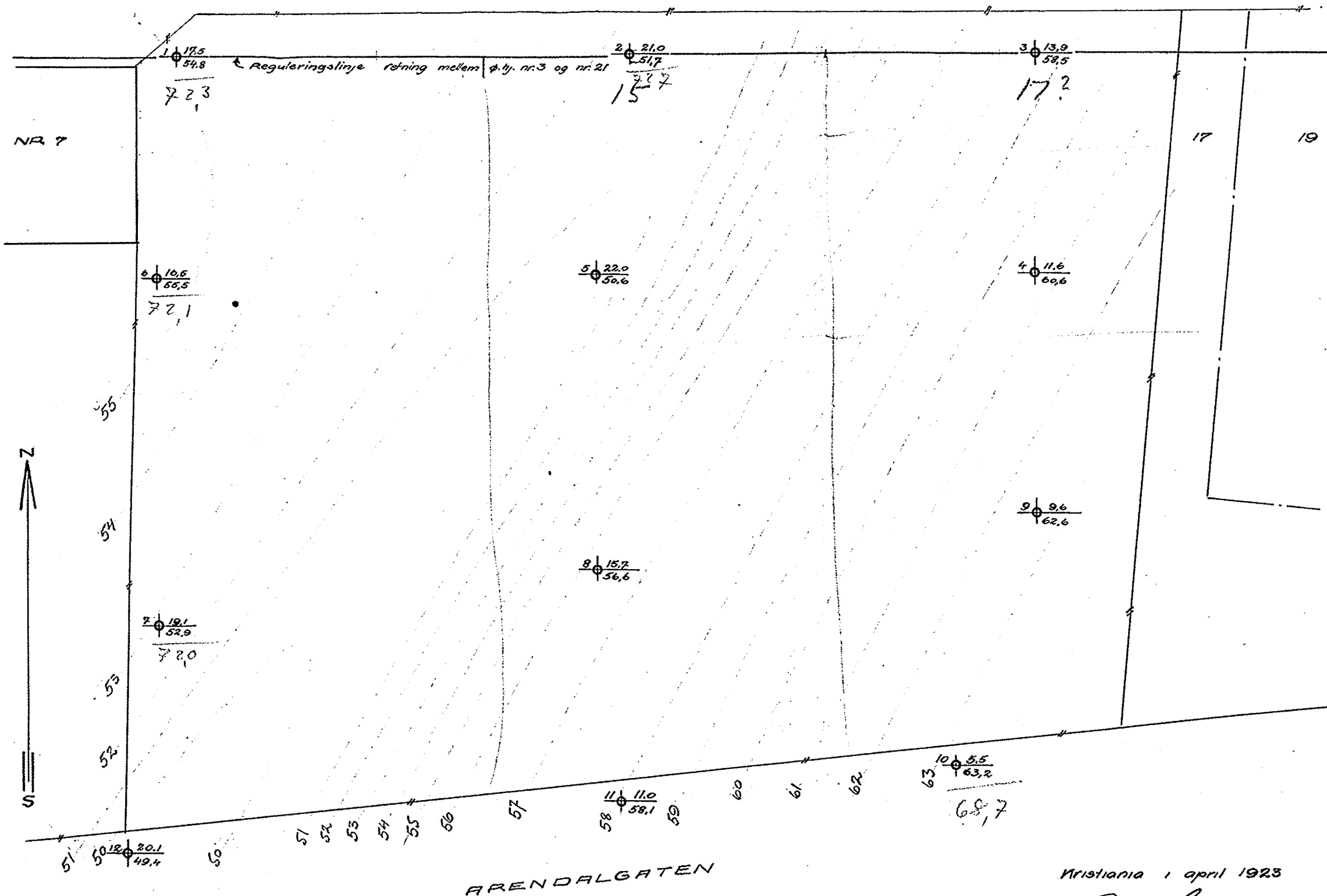
M. 1:200

17.5 Dybde fra terrang til fjeld
54.8 fjeldets kotehöide

--- Supponerte fjeldkoter

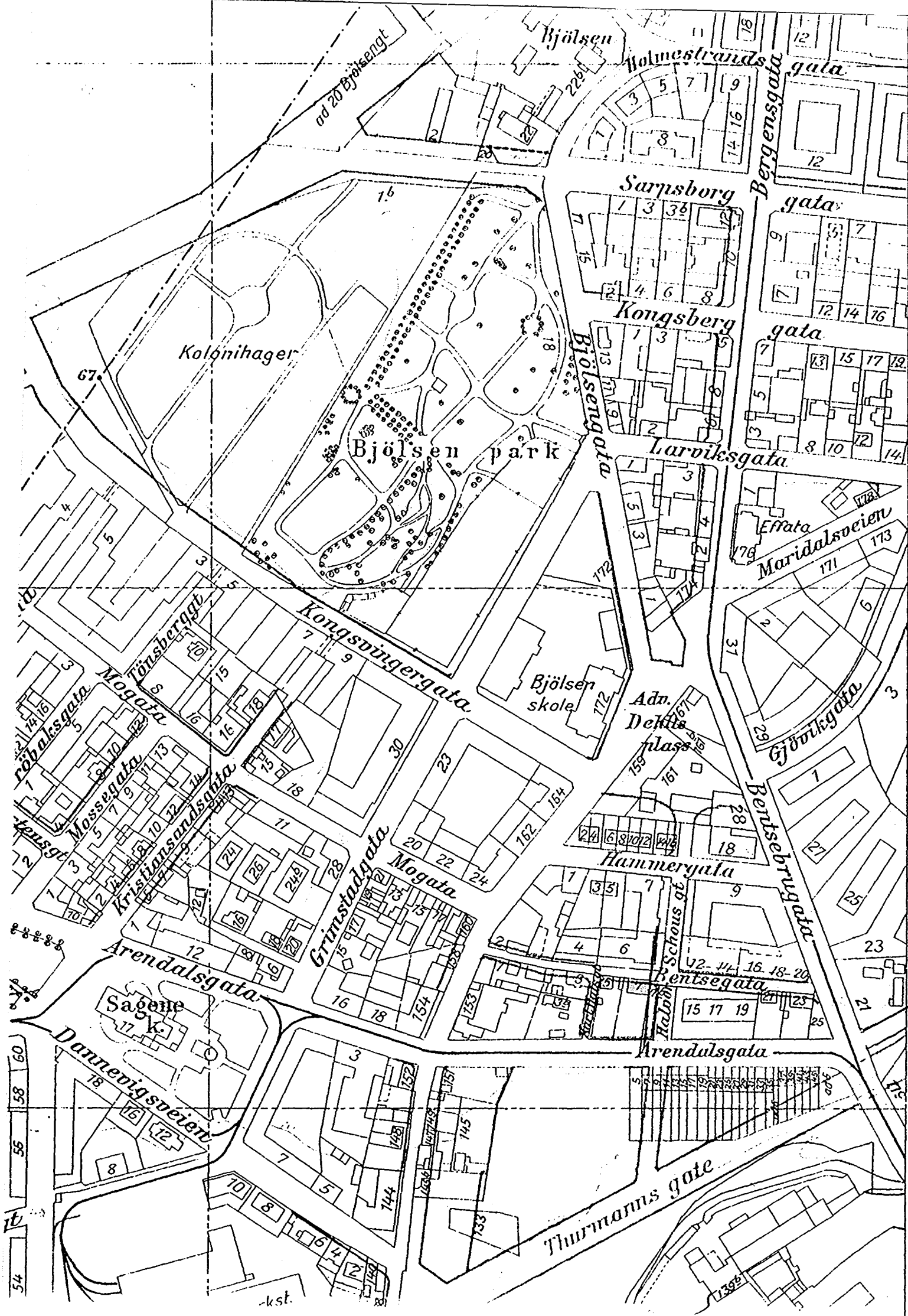
Höiderne refererer sig til byens f.m.

BENTSE GATEN



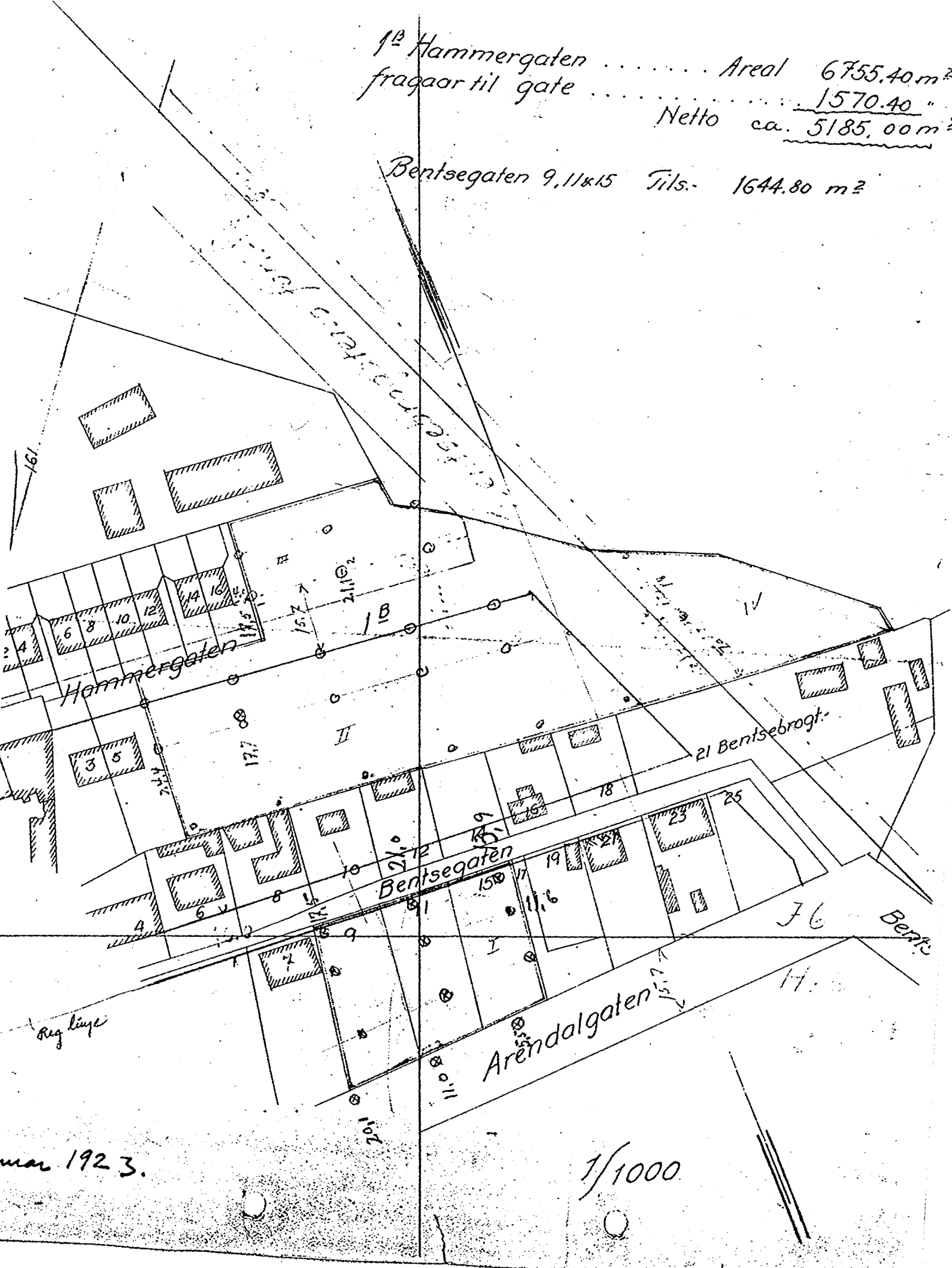
Kristiania 1 april 1923

Carlsberg



1^o Hammergaten Areal 6755.40 m²
 fragaar til gate 1570.40 " ca
 Netto ca. 5185.00 m²

Bentsegaten 9, 11 & 15 Tils. 1644.80 m²



mar 1923.

1/1000

Bilag til Bl. 193