

\*SO: B1<sup>I</sup>

1184

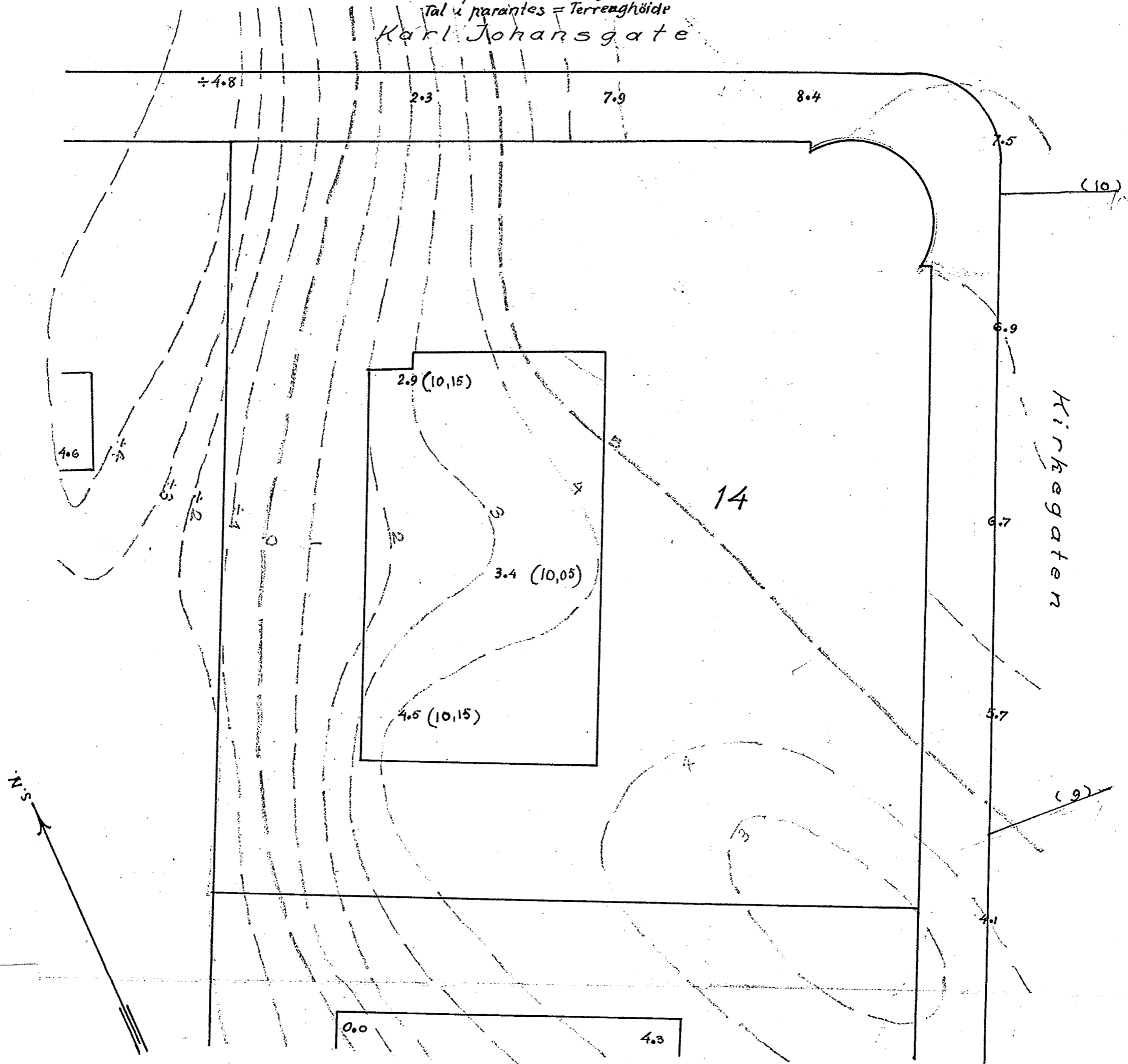
Karl Johansgt 14

Boringsplan for Karl Johansgate N<sup>o</sup> 14.

Bl. 1184.

M = 1:200

Tal = Fjelllets Cote etter byens  $\pm$   
Punktet er boringshul.  
Tal i parentes = Terrenghøide  
Karl Johansgate



Oslø 16-8-1932  
Oscarhøye.

§.