

*SO: B1^I

969

Dronningsgt 20
Prinsensgt. 6

Boringsplan for Dronningens gt. 20 og Prinsens gt. 6. B1.969.

M = 1:200

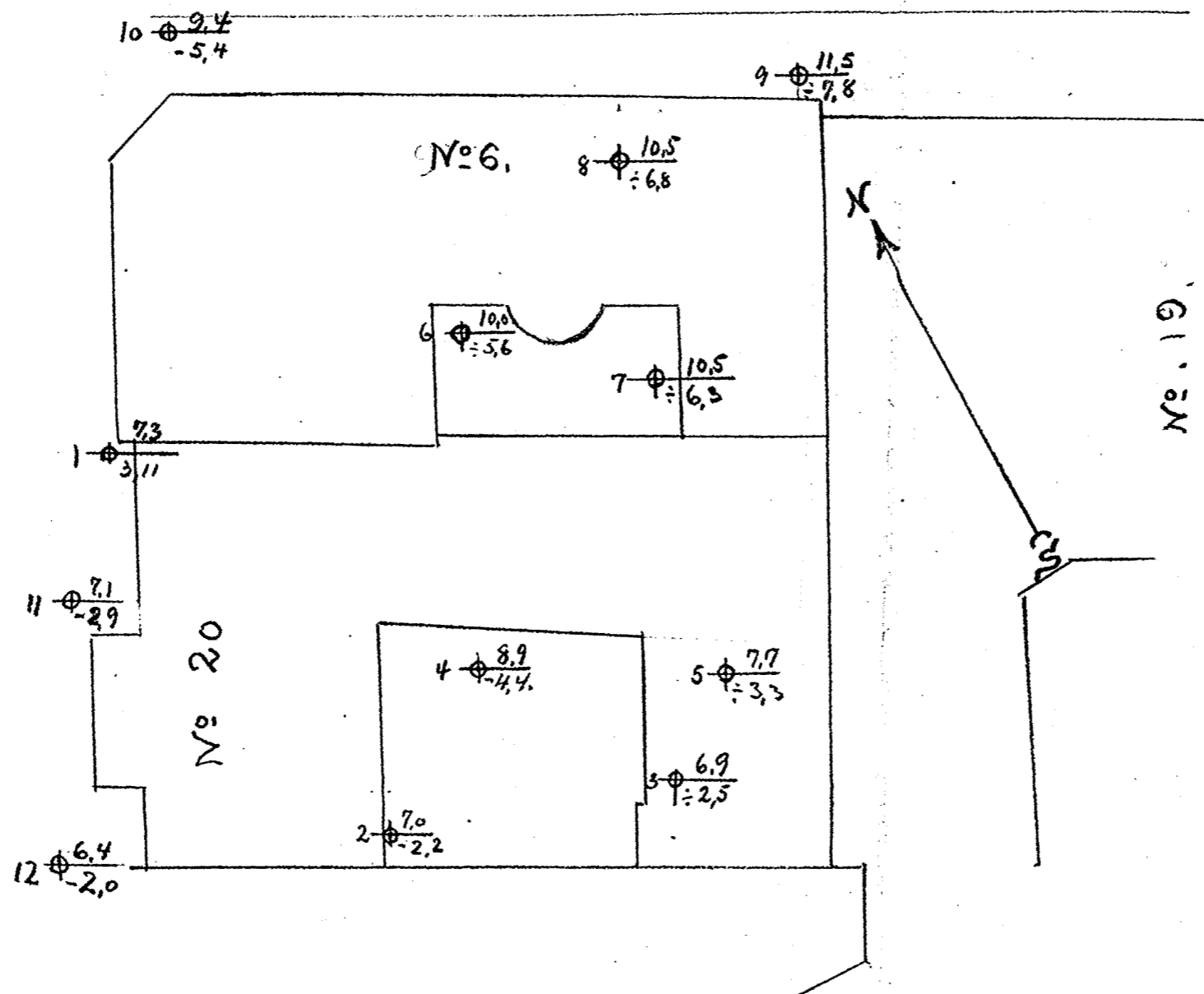
Betegnelser.

N^o $\frac{9.4}{-5.4}$ = Boret dybde i m.
 $\frac{5.4}{-5.4}$ = Fjellens cotehöide efter byens $\frac{1}{2}$ 0

← Prinsens gt →

Fm OA & PM

← Dronningens gt. →



Oslo. 3.-10-1931.

Oscarhaug.