

\* NO: B1<sup>II</sup>

290

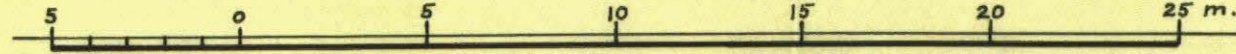
Arbeidergt.

Rosenkrantz st. 10

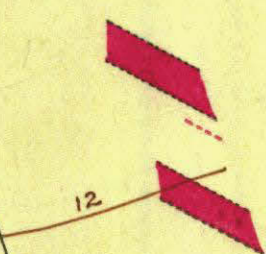
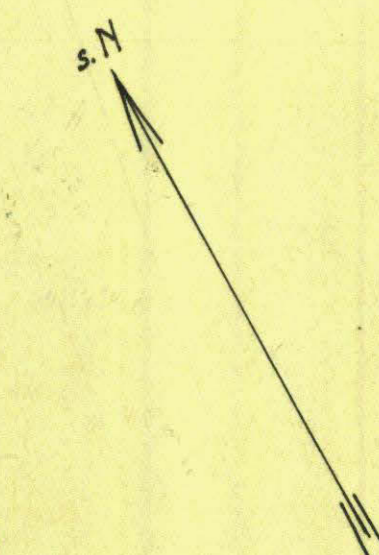
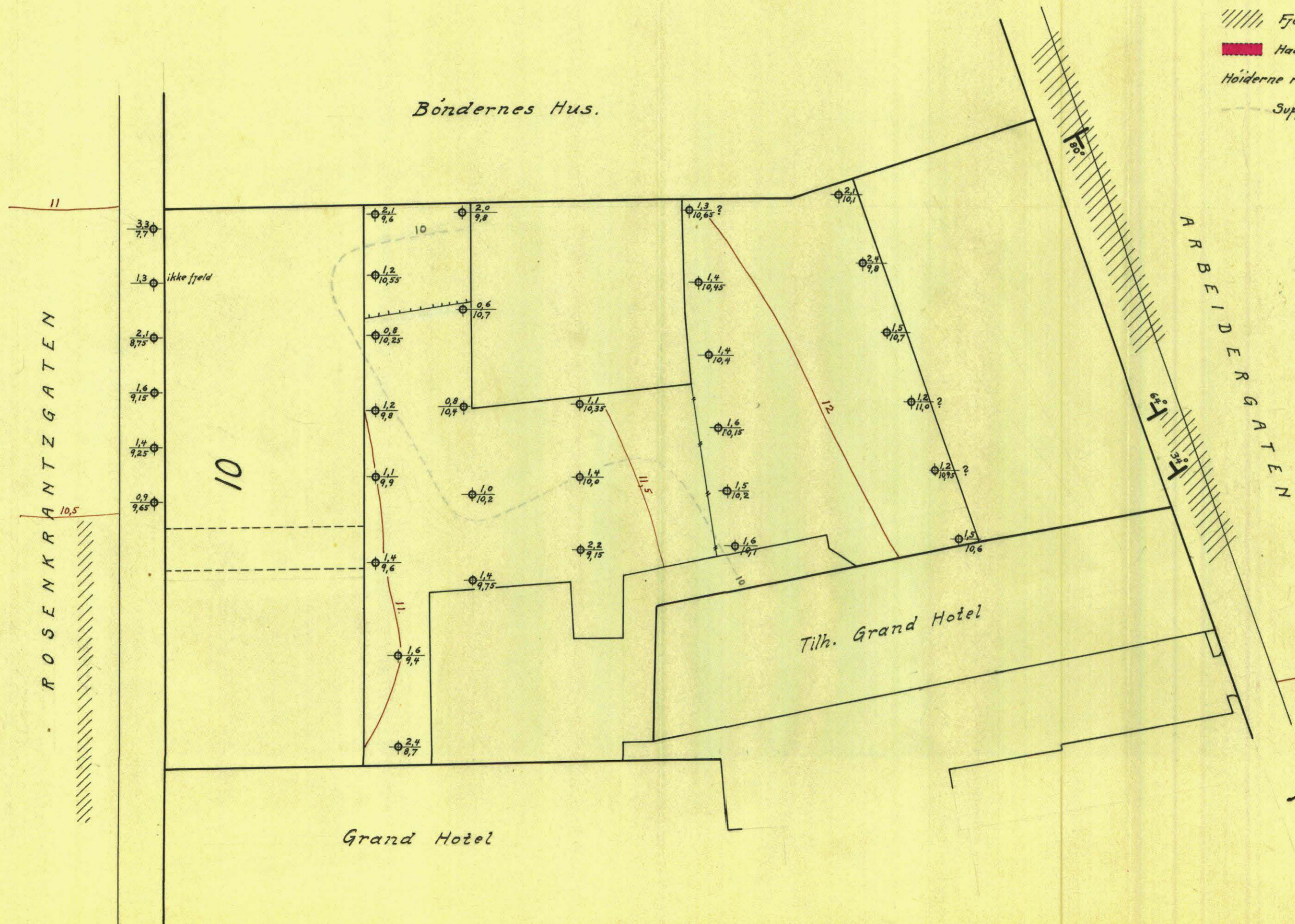
Grundboringskart for nr. 10 Rosenkrantzgaten

Bl. 290

M. 1:20



- Betegner
- $\oplus \frac{1.5}{12.5}$  Dybde fra terreng til fjeld
  - $\oplus \frac{12.5}{9.8}$  Fjeldets kotehøide
  - Terrengkoter  $\frac{1}{2}$  m. ekvidist.
  - //// Fjeld „i dagen“
  - Haardfjeldsgang
  - Høiderne refererer sig til byens f.m.
  - - - - - Supponerte fjeldkoter 1 m. ekv.



Kristiania septbr. 1924  
Oscarberg.

P. O.